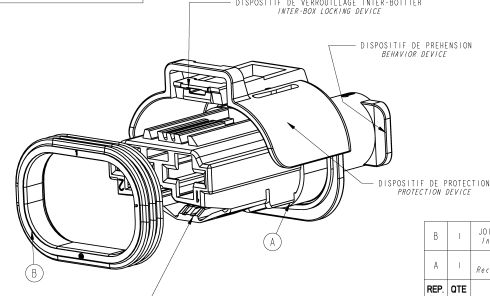
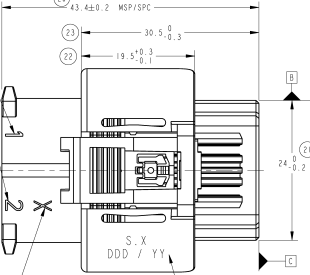
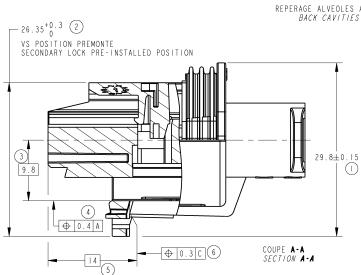
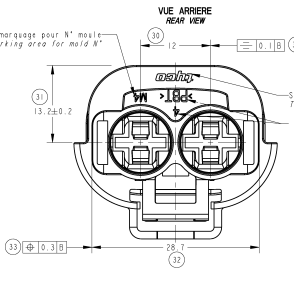
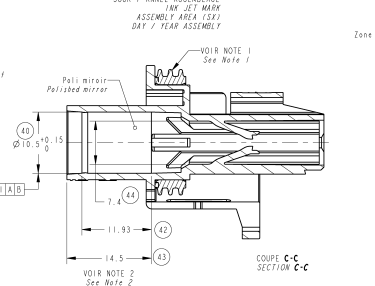
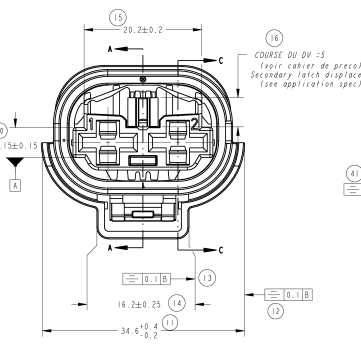
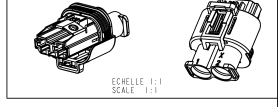


PORTE-CLIPS / VS OUVERT
TERMINAL RECEPTACLE HOUSING / SECONDARY LOCKING OPENED



REVISONS		DATE	APP
E	ADDED 2 DIFFERENT DESIGN, TYCO SHW BOARD	12/01/13	JDr
F	DELETE 2 DESIGN, ADD 1M JET MARK	11/04/13	JDr



REP	QTE	DESIGNATION	MATIERE	COULEUR
B	1	JOINT INTERFACIAL (interfacial seal)	SILICONE MOU SO autolubrifiant	VERT Green
A	1	PORTE-CLIP Receptacle housing	PBT	VOIR TABLE See table

- NOTES :-
 <1> LEVRES DU JOINT EXEMPTES DE BAVURES, COUPURES OU DEFECTS D'ASPECTS
 SEAL MUST NO BURRS, CRACKS OR SURFACES DEFECTS
 <2> ZONE SANS PLAN DE JOINT, EXEMPTE DE MARQUES OU RAYURES
 AREA WITHOUT JUNCTION LINES, MUST NO MARKS OR BURRS
 - MSP : COTES SUIVIES EN MSP / SPEC DIMENSIONS
 DOCUMENTS DE REFERENCE / REFERENCE DOCUMENTS :-
 - PLAN D'INTERFACE / INTERFACE DRAWING : TYCO : No 7 Nr 154483 PSB : STE No 7 Nr 913821699
 - PLAN D'ALVEOLE (8mm NGI) / 8mm NGI CAVITY DRAWING : TYCO : No 7 Nr 3213 0 101 106 PROTERI : PSB : STE No 7 Nr 984155350
 - CDC CONNECTIQUE PSA / PSA CONNECTIC CDC : PSB : STE No 7 Nr 96 298 680 93

REFERENCES PORTES LANGUETTES ASSOCIEES / ASSOCIATED TABS HOUSINGS REFERENCES

REF (PN) TYCO	DESIGNATION / DESCRIPTION	MATIERE / MATERIAL	COULEUR / COLOR
1544334-1	Porte-languettes 2 voies (8mm) étanche / 2-way (8mm) sealed tab housing	PBT 101 FV	NOIR / BLACK
1544334-2	Porte-languettes 2 voies (8mm) étanche / 2-way (8mm) sealed tab housing	PBT 105 FV	BLEU / BLUE
1544334-3	Porte-languettes 2 voies (8mm) étanche / 2-way (8mm) sealed tab housing	PBT 101 FV	GRIS / GREY

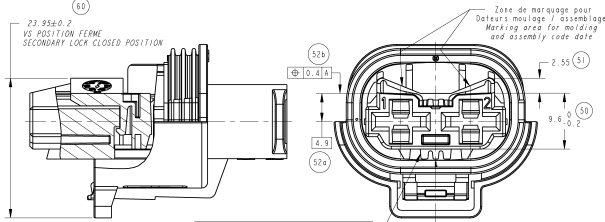
REFERENCES CLIPS ET JOINTS ASSOCIEES / ASSOCIATED FEMALES RECEPTACLES AND SEALS REFERENCES

REF (PN) TYCO	DESIGNATION / DESCRIPTION	MATIERE / MATERIAL	COULEUR / COLOR
1544227-1	Clip 8mm NGI, section 3 à 6 mm ² / Receptacle 8mm NGI, wire sect 3 to 6 mm ²	Cuivre Micro alliage / Micro alloy copper	/
1544228-1	Clip 8mm NGI, section 7 à 10 mm ² / Receptacle 8mm NGI, wire sect 7 to 10 mm ²	Cuivre Micro alliage / Micro alloy copper	/
1544310-1	Joint unifiilaire, diamètre fil 3.18 à 4.2mm / Single wire seal, wire diameter 3.18 to 4.2mm	Silicone Autolubrifiant / Self-lubricated Silicon	VERT / GREEN
1544316-2	Joint unifiilaire, diamètre fil 4.3 à 6mm / Single wire seal, wire diameter 4.3 to 6mm	Silicone Autolubrifiant / Self-lubricated Silicon	ORANGE
1544316-3	Bouchon / Seal plug	Silicone Non-lubrifiant / Non-lubricated Silicon	BLANC / WHITE
1544664-1	Super-joint unifiilaire, diamètre fil 3.18 à 4.2mm / Super-single wire seal, wire diameter 3.18 to 4.2mm	Silicone Autolubrifiant / Self-lubricated Silicon	VERT / GREEN
1544664-2	Super-joint unifiilaire, diamètre fil 4.3 à 6mm / Super-single wire seal, wire diameter 4.3 to 6mm	Silicone Autolubrifiant / Self-lubricated Silicon	ORANGE
1544664-3	Super-bouchon / Super-seal plug	Silicone Non-lubrifiant / Non-lubricated Silicon	BLANC / WHITE

REFERENCES TYCO & CODAGES COULEURS ASSOCIEES / TYCO PART NUMBERS & ASSOCIATED CODING COLORS

1544317-1	1544317-2	1544317-3
NOIR / BLACK	BLEU / BLUE	GRIS / GREY

PORTE-CLIPS / VS FERME
TERMINAL RECEPTACLE HOUSING / SECONDARY LOCKING CLOSED



DISPOSITIF DE CODAGES DEFINIS SUIVANT
 PLAN D'INTERFACE N° : VOIR NOTA
 CODING DEVICE DEFINED TO
 INTERFACE DRAWING N° : SEE NOTE

TYCO	TYCO	TYCO
1544317-1	1544317-2	1544317-3
NOIR / BLACK	BLEU / BLUE	GRIS / GREY