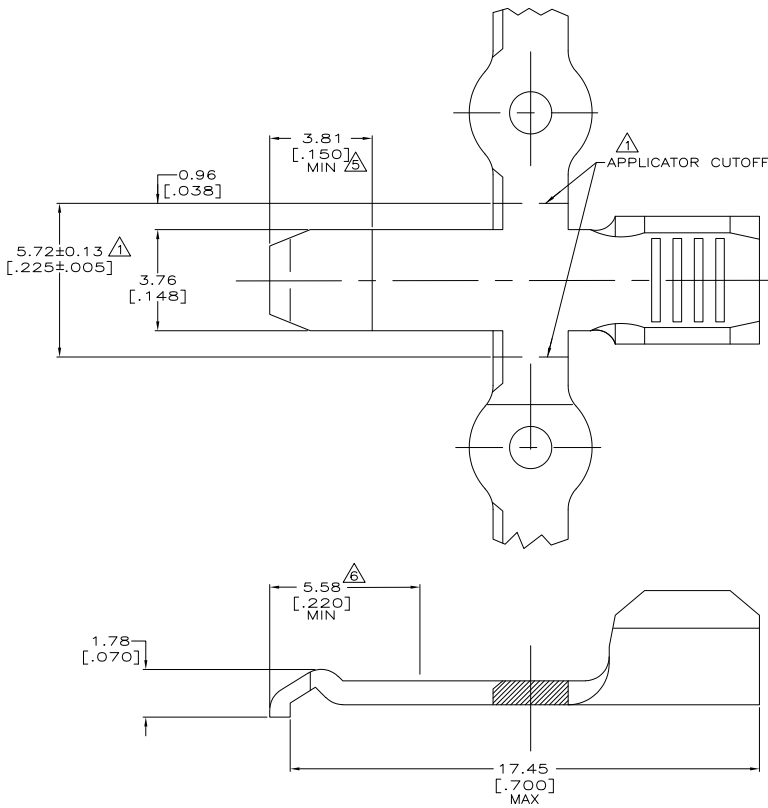
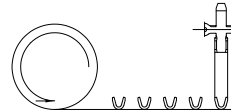
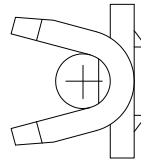


THIS DRAWING IS UNPUBLISHED. RELEASED FOR PUBLICATION. ALL RIGHTS RESERVED.

LOC	QTY	REVISIONS			
FT	60	REV	DESCRIPTION	DATE	BY
M1		REVISED PER ECO-11-004820		11MAR11	RK HMR



- △ REFER TO AMP INSTRUCTION SHEET IS 2928 FOR APPLICATOR AND CUTOFF DETAILS.
- △ MATERIAL: COPPER
- △ FINISH: 0.05 [.00200] MINIMUM THICK SILVER PLATING.
- △ FINISH: 0.00076 [.000030] MINIMUM THICK GOLD PLATING OVER 0.00127 [.000050] MINIMUM THICK NICKEL PLATING.
- △ FINISH: 0.00076 [.000030] MINIMUM THICK GOLD PLATING OVER TOP SURFACE INDICATED AND GOLD FLASH OVER REMAINING SURFACES OVER 0.00127 [.000050] MINIMUM NICKEL PLATING.
- △ TOP SURFACE IS GRAPHITE COATED IN AREA INDICATED.



DIRECTION OFF OF REEL INTO THE APPLICATOR

SCALE: NONE

SUPERSEDED BY	FINISH	DESCRIPTION	PART NO
-2	△ △	STRIP	1-53892-1
	△	STRIP	53892-8
	△	LOOSE PIECE	53892-7
	△	LOOSE PIECE	53892-4
	△	STRIP	53892-2

THIS DRAWING IS A CONTROLLED DOCUMENT.		DN	K. TILLMAN/UTA	3-21-04	TE Connectivity
		DR	D. HUSSEY	3-23-04	
		DR	D. KEMPKA	3-23-04	CONTACT, CRIMP BARREL, SERIES 1, POWER LOCK
		PROD SPEC			
DIMENSIONS: MM [INCHES]		TOLERANCES UNLESS OTHERWISE SPECIFIED:			
0 P/C		± .005			
1 P/C		± .005			
2 P/C		± 0.20 [A08]			
3 P/C		± .005			
4 P/C		± .005			
ANGLES		± .5°			
FINISH		SEE TABLE			
MATERIAL		SEE TABLE			
WEIGHT					
CUSTOMER DRAWING					
SIZE		A2	00779	53892	RESTRICTED TO
SCALE		10:1	SHEET	1 of 1	REV M1