

4

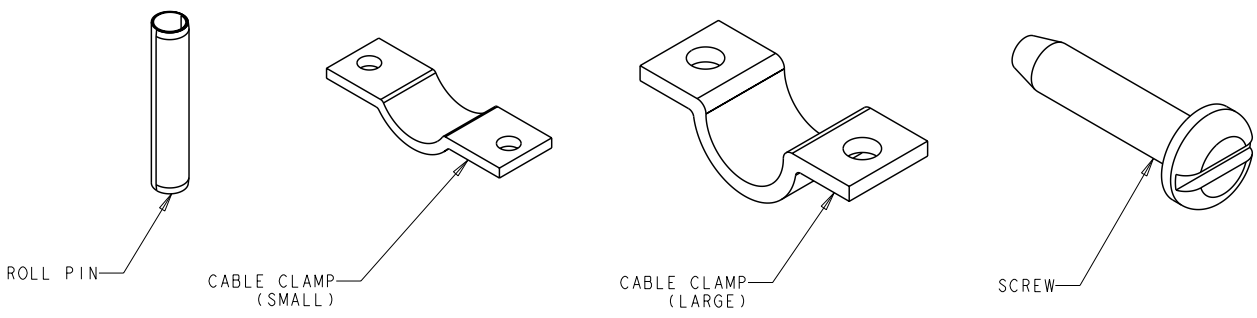
3

2

1

THIS DRAWING IS UNPUBLISHED. RELEASED FOR PUBLICATION 20
 © COPYRIGHT 20 BY TYCO ELECTRONICS CORPORATION. ALL RIGHTS RESERVED.

LOC	DIST	REVISIONS				
P	LTR	DESCRIPTION	DATE	DWN	APVD	
-	-	B	REVISED PER ECO-09-017213	24 JUL 2009	SS MS	



KIT CONTENTS		KIT TYPE	PART NUMBER
1 CABLE CLAMP (SMALL), 2 SCREWS, 1 ROLL PIN	4 POLE	647747-3	
1 CABLE CLAMP (LARGE), 2 SCREWS, 2 ROLL PINS	6 POLE	647747-2	
1 CABLE CLAMP (LARGE), 2 SCREWS, 3 ROLL PINS	8 POLE	647747-1	

<small>THIS DRAWING IS A CONTROLLED DOCUMENT FOR TYCO ELECTRONICS CORPORATION IT IS SUBJECT TO CHANGE AND THE CONTROLLING ENGINEERING ORGANIZATION SHOULD BE CONTACTED FOR THE LATEST REVISION.</small>		DWN K. WHITAKER 7 APR 2008 CHK S. RIDGILL 7 APR 2008 APVD S. RIDGILL 7 APR 2008	Tyco Electronics Harrisburg, PA 17105-3608
DIMENSIONS: INCHES	TOLERANCES UNLESS OTHERWISE SPECIFIED: 0 PLC ±- 1 PLC ±- 2 PLC ±- 3 PLC ±- 4 PLC ±- ANGLES ±-	NAME KIT, CABLE CLAMP, HARDWARE PACK, AMP POWER SERIES 15/30/45	RESTRICTED TO
MATERIAL -	FINISH -	PRODUCT SPEC - APPLICATION SPEC - WEIGHT -	SIZE A3 CAGE CODE 00779 DRAWING NO C-647747
CUSTOMER DRAWING		SCALE NTS	SHEET 1 OF 1 REV B

AMP 1470-19 REV 31MAR2000
 Pro/ENGINEER DRAWING