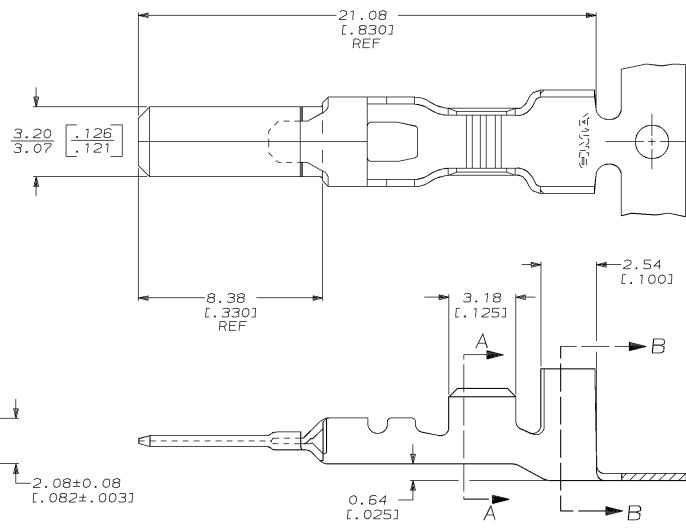
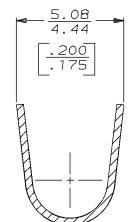
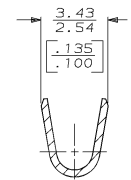
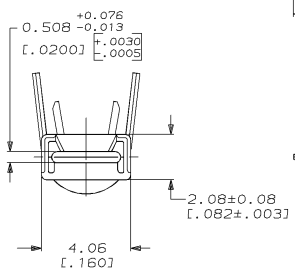


DRAWING MADE IN THIRD ANGLE PROJECTION
 THIS DRAWING IS UNPUBLISHED. RELEASED FOR PUBLICATION
 © COPYRIGHT 19 BY AMP INCORPORATED. ALL INTERNATIONAL RIGHTS RESERVED.

LOC		DIST		ZONE		LTR		REVISIONS		DATE	APPD
AF	50	P	F	C				REVISD PER 0710-0055-96	12/FEB/96	PF/DD	



- 1 CONTINUOUS STRIP ON REELS.
 (1) 0.8mm - [18] AWG - 2.84 [1.12] INS DIA AND
 (1) 1.3mm - [16] AWG - 3.12 [1.23] INSUL DIA.



SECTION A-A

SECTION B-B

	0.5 - 2.0mm ² [20-14] AWG	63627-1
INSULATION RANGE	WIRE RANGE	PART NO

DO NOT SCALE PRINT. UNLESS SPECIFIED DIMENSIONS IN mm [INCHES] TOLERANCES: 0N ± 2 PLC DEC ± 0.25 (.010) 3 PLC DEC ± - ANGLES ± -	DR 3/25/92 P FORTNEY	NAME AMP AMP Incorporated Harrisburg, PA 17105-3608
	CHK 3/25/92 JR RUTH	
MATERIAL 4M BRASS	APPD 3/25/92 K SHANK	CONTACT, 3.18 [1.125] BLADE
FINISH 0.002032 [0.000080] MIN TIN PLATE PER MIL-T-10727	PRODUCT SPEC -	SIZE CAGE CODE DRAWING NO C 00779 63627
	APPLICATION SPEC 114-49003	SCALE SHEET 8:1 1 OF 1
	WEIGHT -	

METRIC

CUSTOMER DRAWING