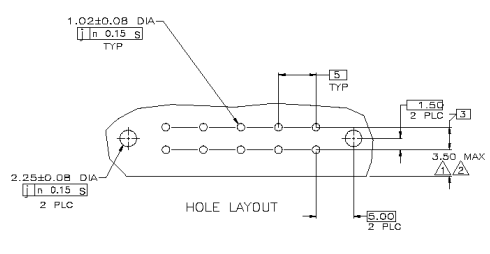
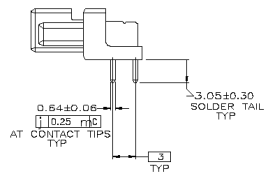
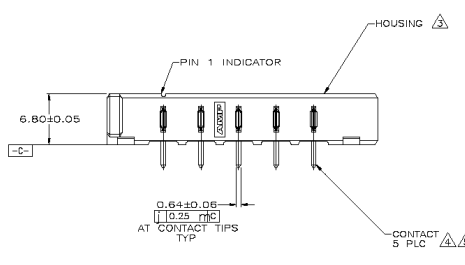


- △ COORDINATE DIMENSION APPLIES FROM CENTER OF ACTUAL FEATURE.
- △ DIMENSION CAN BE EXCEEDED FOR APPLICATIONS WHERE FINAL MATED POSITION OF PACK IS ABOVE TOP SURFACE OF PCB.
- △ LCP, BLACK
- △ 2.54 m MIN TIN ON SOLDER TAIL OVER
- △ 1.90 m MIN NICKEL ALL OVER
- △ CONTACTS: BRASS



DIMENSIONS mm		DR 1:1		PART NAME CUSTOMER DRAWING		5787428-1 PART NUMBER
MATERIAL SEE CALLOUTS		FINISH SEE CALLOUTS		CUSTOMER DRAWING		AMP Incorporated Harrisburg, PA 17105-3605 HEADER ASSEMBLY, RIGHT ANGLE, LEFT VOLTAGE KEY, 12V, W/MTG HOLES, BATTERY INTERCONNECTS SEE SPEC SHEET FOR DIMENSIONS A1 00779 © 5787428 DATE: 4/1 1 OF 1