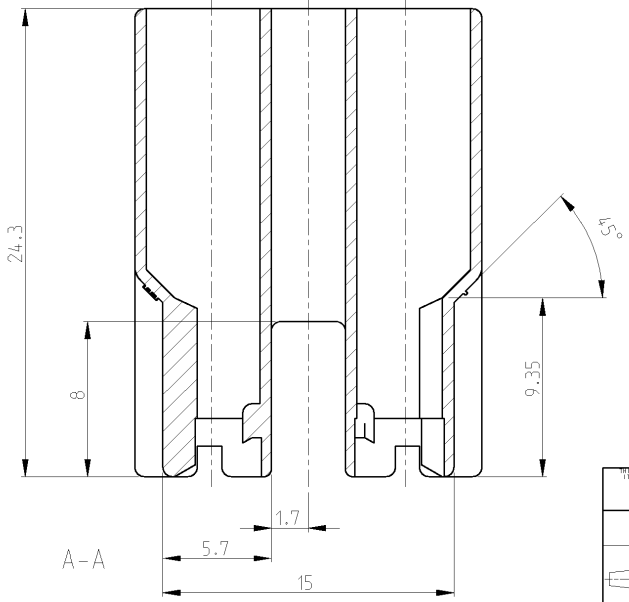
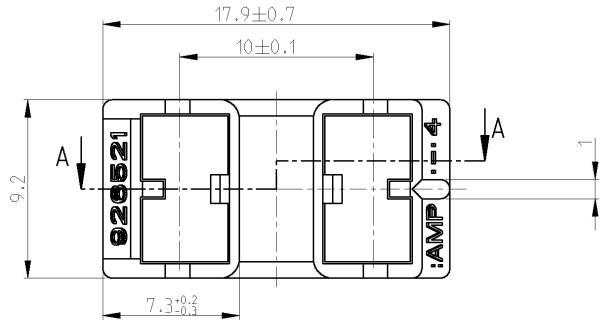


THIS DRAWING IS UNPUBLISHED. RELEASED FOR PUBLICATION 2003
 BY TYCO ELECTRONICS CORPORATION. ALL RIGHTS RESERVED.

LOC	DIST	REVISIONS				
P	LTR	DESCRIPTION	DATE	DWN	APVD	
L		NEW CAD DRAWING CREATED	21SEP2004	Abt	C.G.	
L1		1-926521-2 ADDED	08FEB2006	Abt	Goep	



COLOUR	MATERIAL	PART NUMBER	REV
BLACK	PA 6.6 (V-0)	1-926521-2	A
BLACK	PA 6.6 HS-LC	1-926521-1	B
BROWN RAL 8003	PA 6.6	0-926521-9	L
WHITE RAL 9001	PA 6.6	0-926521-8	L
BLUE RAL 5012	PA 6.6	0-926521-7	L
YELLOW RAL 1018	PA 6.6	0-926521-6	L
GREY RAL 7037	PA 6.6	0-926521-5	L
RED RAL 3000	PA 6.6	0-926521-4	L
GREEN RAL 6011	PA 6.6	0-926521-3	L
BLACK	PA 6.6	0-926521-2	L
NATURAL	PA 6.6	0-926521-1	L

<small>THIS DRAWING IS A CONTROLLED DOCUMENT FOR THE ELECTRONICS INDUSTRY. IT IS SUBJECT TO CHANGE AND THE CONTROLLING ENGINEERING ORGANIZATION SHOULD BE CONTACTED FOR THE LATEST REVISION.</small>		DWN 21SEP2004 Abraham G. CHK 22SEP2004 Goppel C. ZPV 23SEP2004 Bleicher M.	tyco Electronics tyco Electronics AMP GmbH D - 64625 Bensheim
DIMENSIONS: mm 	TOLERANCES UNLESS OTHERWISE SPECIFIED: 0. PLC ±0.2 1. PLC ±0.2 2. PLC ±0.2 3. PLC ±0.2 4. PCC ±0.2 ANGLES 45° FINISH -	NAME 2 pol. Pos.Lock Gehäuse H-Form 2 POS: POS.LOCK HOUSING H-TYPE PRODUCT SPEC - APPLICATION SPEC -	SIZE A3 CAGE CODE 00779 DRAWING NO. G-926521 RESTRICTED TO -
MATERIAL -		WEIGHT 1.15 g CUSTOMER DRAWING	SCALE 5:1 SHEET 1 OF 1 REV L1

AMP 1470-19 REV 31MAR2000