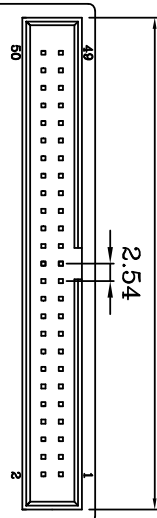


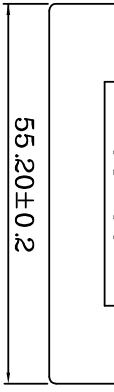
# FCP50S

71.15±0.3

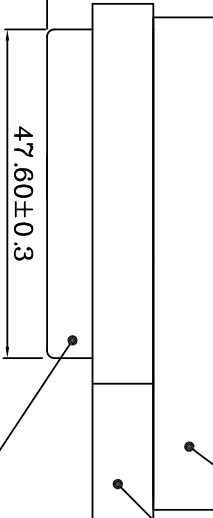
15.20±0.3



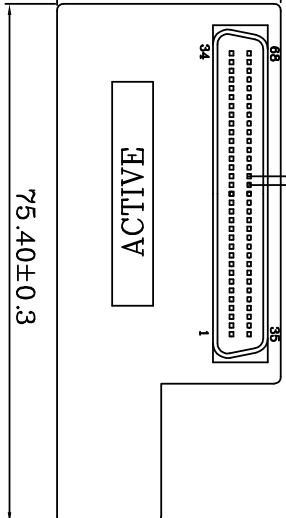
68-50



21.00±0.3



32.60±0.3



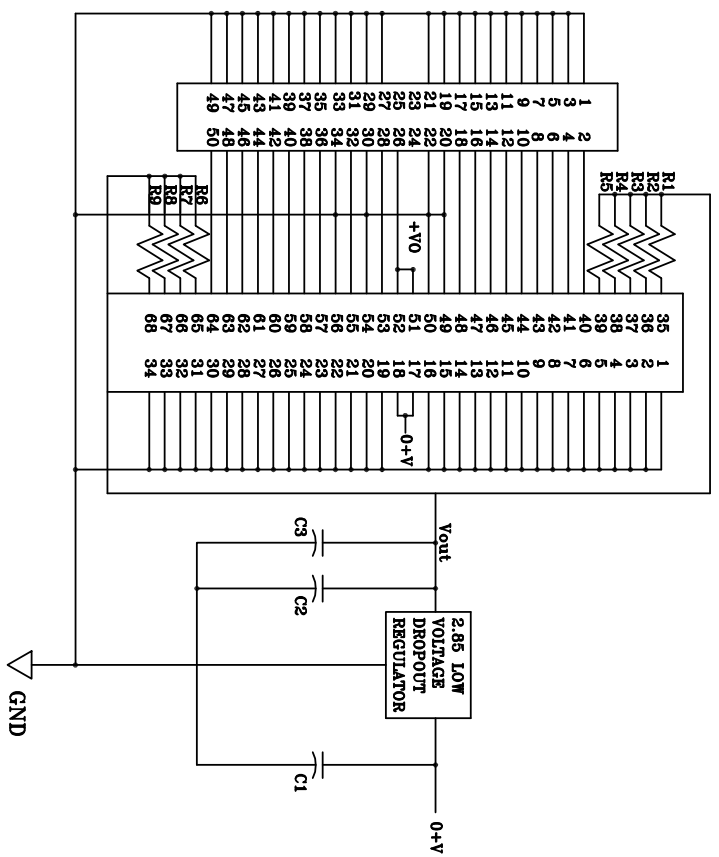
MDD68MP

REMARK:

1. IDC50PIN FEMALE
2. ASSEMBLY HOOD
3. HPD68PIN FEMALE PLASTIC

• 100% TEST

R1 - R9=110Ω ±2%  
 C1=4.7μF/16V ±20% TAN.CAP  
 C2=22μF/16V ±20% TAN.CAP  
 C3=0.1μF/50V +80% -20% CER.CAP  
 REG Output=2.85V ± 1%



REV.	A	S68A14-R	UPPER BYTE ACTIVE TERMINATOR	HPD68PIN FEMALE TO IDC50PIN FEMALE ACTIVE RIGHT ANGLE	12/23/99	DATE	APPROVED	SIZE	A4	REV.	A	FILE NAME:	S68A14-R
<p>UNLESS OTHERWISE SPECIFIED TOLERANCE</p> <p>AVG. DIM. ±0.5</p> <p>0 ±0.3</p> <p>.00 ±0.2</p> <p>SCALE: 1:1 UNIT: mm</p> <p>DRAWN MICHAEL 12/23/99</p> <p>CHECKED</p> <p>PRODUCT NO. AB 845 TERM</p> <p>ASSMANN Electronic GmbH</p>													

Assmann Electronic GmbH

S68A14-R