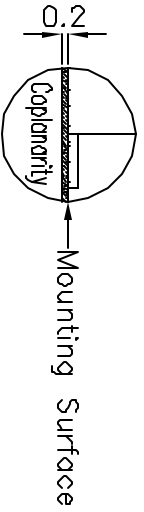
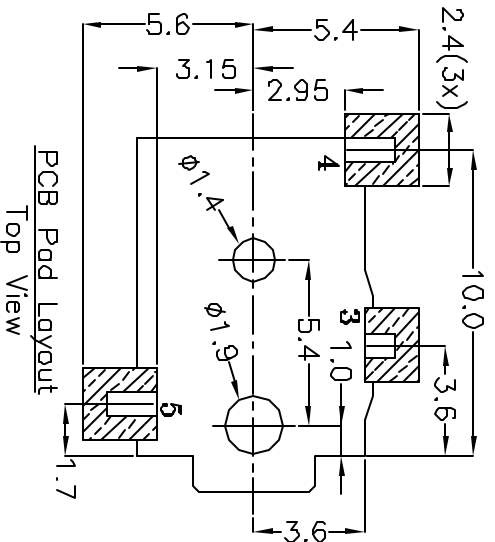
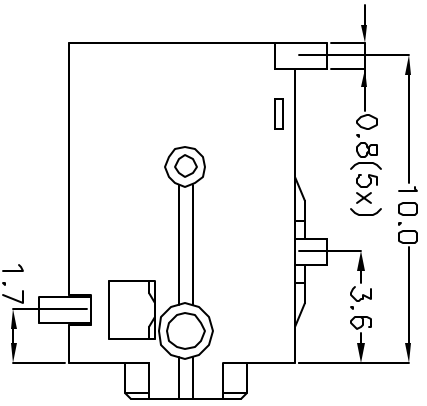
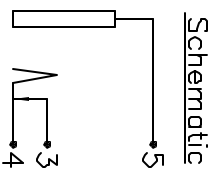
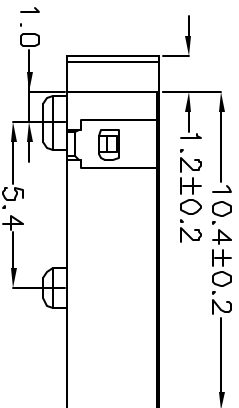
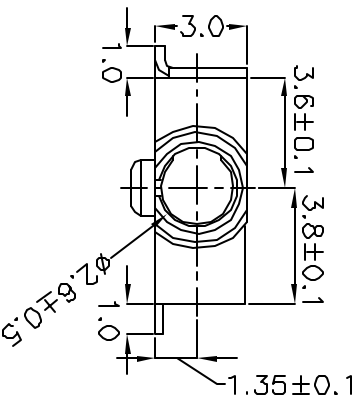
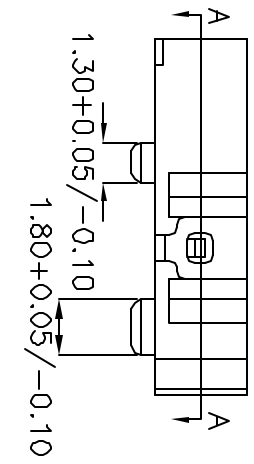


Section A-A

- Specifications:
1. Rated Voltage – 16 VDC
 2. Rated Current – 300 mA
 3. Contact Resistance – 100 mOHMS or less under all conditions, including After Life Testing.
 4. Insulation Resistance – 100 MOHMS or greater at 250 VDC.
 5. Dielectric Withstand Voltage – 250 VAC RMS for 1 minute.



Term	Material	Color	Plating	Remark
Plastic Housing <P1>	Polymamide	Black		UL94V-0 Rated
Shunt (Tip) <M3>	Brass		Gold Flash	30T
Tip Contact <M4>	Ti-Cu Alloy		Gold Flash	20T
Ground <M5>	Ti-Cu Alloy		Gold Flash	20T

cui inc
 9815 SW Allen, Suite 103
 Beaverton, OR 97006
 Phone: (503) 643-4899
 800-276-4899
 Fax: (503) 372-1266
 Website: www.cui.com

TITLE: **2.50 Surface Mount Jack - Mono**

PART NO. MJ-2533-SMT UNITS: Millimeters

DRAWN BY: Todd R. White APPROVED BY: SCALE: 4x