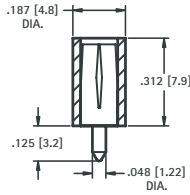


VERTICAL PC TEST JACK

ACCEPTS .080 (2.0) TIP

This low profile vertical jack allows dense packaging where space is limited. Mount into a .052 (1.32) diameter hole. Provides easy access and positive electrical contact. The contact is recessed to prevent accidental shorting. Capacitance between two adjacent jacks less than 1.0 pF at 1 MHz. Operating voltage is 1500V RMS. Current rating 5 Amps max.



CAT. NO.	COLOR
6036	WHITE
6037	RED
6038	BLACK
6039	YELLOW
6040	GREEN
6041	BLUE

MATERIAL:

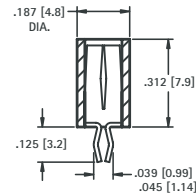
Body: Nylon per ASTM D4066

Contact: Brass, Silver Plate

SNAP-FIT VERTICAL PC TEST JACK

ACCEPTS .080 (2.0) TIP

Low cost, compact and dependable snap-in vertical test jack features a unique spring shank which retains the jack throughout wave soldering procedure. Ideal for use on circuit boards of audio, digital and R.F. circuitry. Contact recessed to prevent accidental shorting. Current rating: 5 Amps. Operating voltage 1500V RMS. Capacitance between two adjacent jacks less than 1.0 pF at 1 MHz.



CAT. NO.	COLOR
6042	WHITE
6043	RED
6044	BLACK
6045	YELLOW
6046	GREEN
6047	BLUE

MATERIAL:

Body: Nylon per ASTM D4066

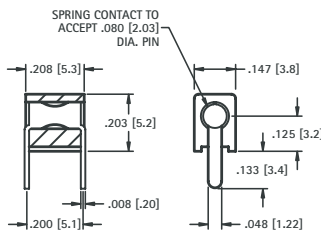
Contact: Beryllium Copper, Silver Plate

Mounting: Snap-fits into .052 (1.32) hole

MINIATURE HORIZONTAL PC TEST JACK

ACCEPTS .080 (2.0) TIP

Space saver test jack designed for use where space is a limiting factor. Half the size of standard jacks. Accepts .080 (2.03) tip plug in either end. Mounts on .200 (5.1) centers in .052 (1.32) holes. Can be spaced side by side on .160 (4.1) centers minimum. Two common terminals. Current rating: 5 Amps. Breakdown voltage: 2100V RMS, Capacitance 1.0pF maximum.



CAT. NO.	COLOR
6048	WHITE
6049	RED
6050	BLACK
6051	YELLOW
6052	GREEN
6053	BLUE

MATERIAL:

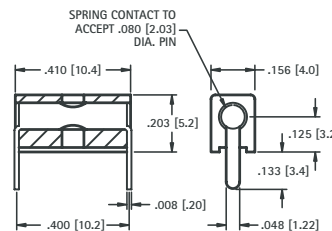
Body: Nylon per ASTM D4066

Contact: Beryllium Copper, Silver Plate

UNIVERSAL HORIZONTAL PC TEST JACK

ACCEPTS .080 (2.0) TIP

This universal design accepts .080 (2.03) tip plug in either end, or from top or bottom. Top contact will also accept hook-type oscilloscope probe. Two common terminals. Current rating: 5 Amps. Breakdown voltage: 2100V RMS, Capacitance 1.0 pF maximum. Mounts on .400 (10.2) centers in .052 (1.32) holes. Side by side mounting on .160 (4.1) centers.



CAT. NO.	COLOR
6054	WHITE
6055	RED
6056	BLACK
6057	YELLOW
6058	GREEN
6059	BLUE

MATERIAL:

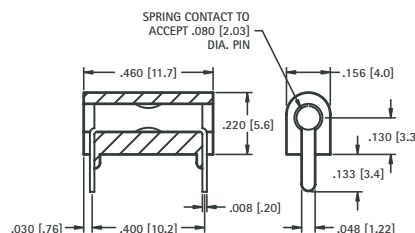
Body: Nylon per ASTM D4066

Contact: Beryllium Copper, Silver Plate

LOW PROFILE HORIZONTAL PC TEST JACK

ACCEPTS .080 (2.0) TIP

This low profile double-entry design is recognized for its dependability, and allows dense packaging on .160 (4.1) centers. Side by side mounting. Closed entry design for use with .074 (1.88) to .084 (2.13) dia. tips. Reliability is designed into this rugged low cost jack. Mounts on .400 (10.2) centers in .052 (1.32) holes. Current rating: 5 Amps. Breakdown voltage: 2100V RMS. Contact resistance .010Ω maximum.



GOLD PLATE CAT. NO.	COLOR	SILVER PLATE CAT. NO.
6060	WHITE	6066
6061	RED	6067
6062	BLACK	6068
6063	YELLOW	6069
6064	GREEN	6070
6065	BLUE	6071

MATERIAL:

Body: Nylon per ASTM D4066

Contact: Beryllium Copper, Gold or Silver Plate