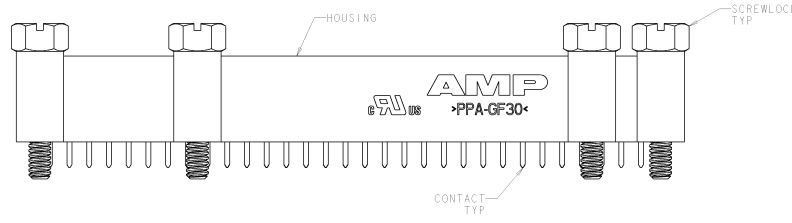
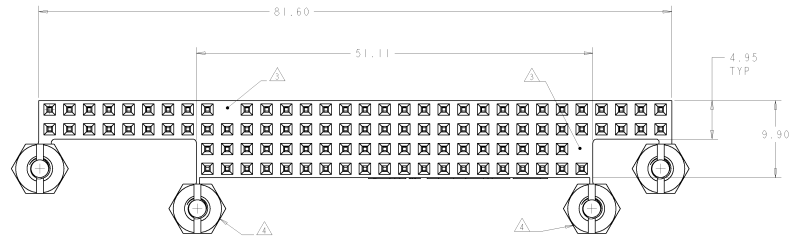
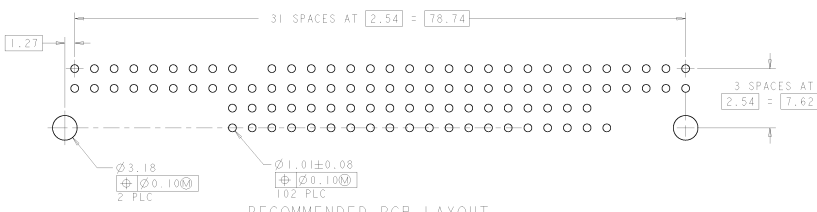
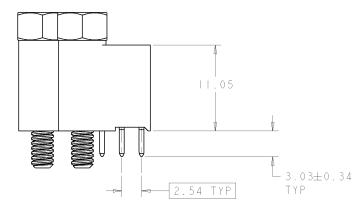


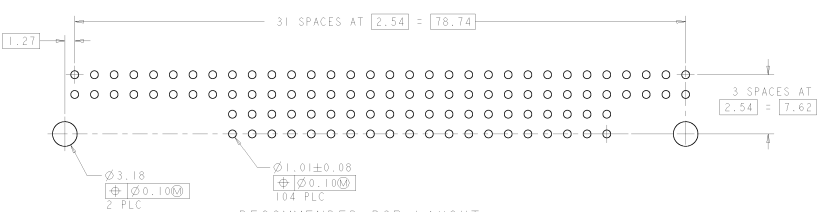
REV	DATE	DESCRIPTION	BY	CHKD	APPD
0		REV PER 063C-0233-02			
A		REV PER EC 053C-0313-04			



- △ HOUSING: HIGH TEMPERATURE, GLASS FILLED NYLON, COLOR: BLACK, CONTACTS: PHOSPHOR BRONZE, SCREWLOCKS: STEEL.
- △ CONTACTS: 0.000381 MIN GOLD ON MATING RECEPTACLE END, 0.00254 BRIGHT TIN-LEAD ON REMAINDER, ALL OVER 0.001270 NICKEL, SCREWLOCKS: CLEAR CHROMATE OVER ZINC.
- △ NO CONTACT IN THIS POSITION, FOR PART NUMBER 1375959-1 & -3 ONLY.
- △ BREAK-AWAY SCREWLOCK/STANDOFF.
- △ CONTACTS: 0.000381 MIN GOLD ON MATING RECEPTACLE END, 0.00254-0.00508 MATTE TIN ON REMAINDER, ALL OVER 0.001270 NICKEL, SCREWLOCKS: CLEAR CHROMATE OVER ZINC.
- △ LEAD FREE PART TO BE USED ON LEAD FREE PCB'S.



RECOMMENDED PCB LAYOUT FOR 1375959-1 & -3



RECOMMENDED PCB LAYOUT FOR 1375959-2 & -4

FINISH	KEYED CIRCUITS	PART NO
△	NO	1375959-4
△	△ YES	1375959-3
△	NO	1375959-2
△	△ YES	1375959-1

DATE PREPARED BY: [REDACTED] BY: [REDACTED]		DATE CHECKED BY: [REDACTED] BY: [REDACTED]		DATE RELEASED BY: [REDACTED] BY: [REDACTED]	
PROJECT NO: 188-1958 REV: 1 DATE: 11-4-1992		CUSTOMER DRAWING: [REDACTED]		PART NO: 1375959-4 ASSEMBLY: PC/104 NON-STACK THROUGH CONTACTS, 4 STANDOFFS, SOLDER	