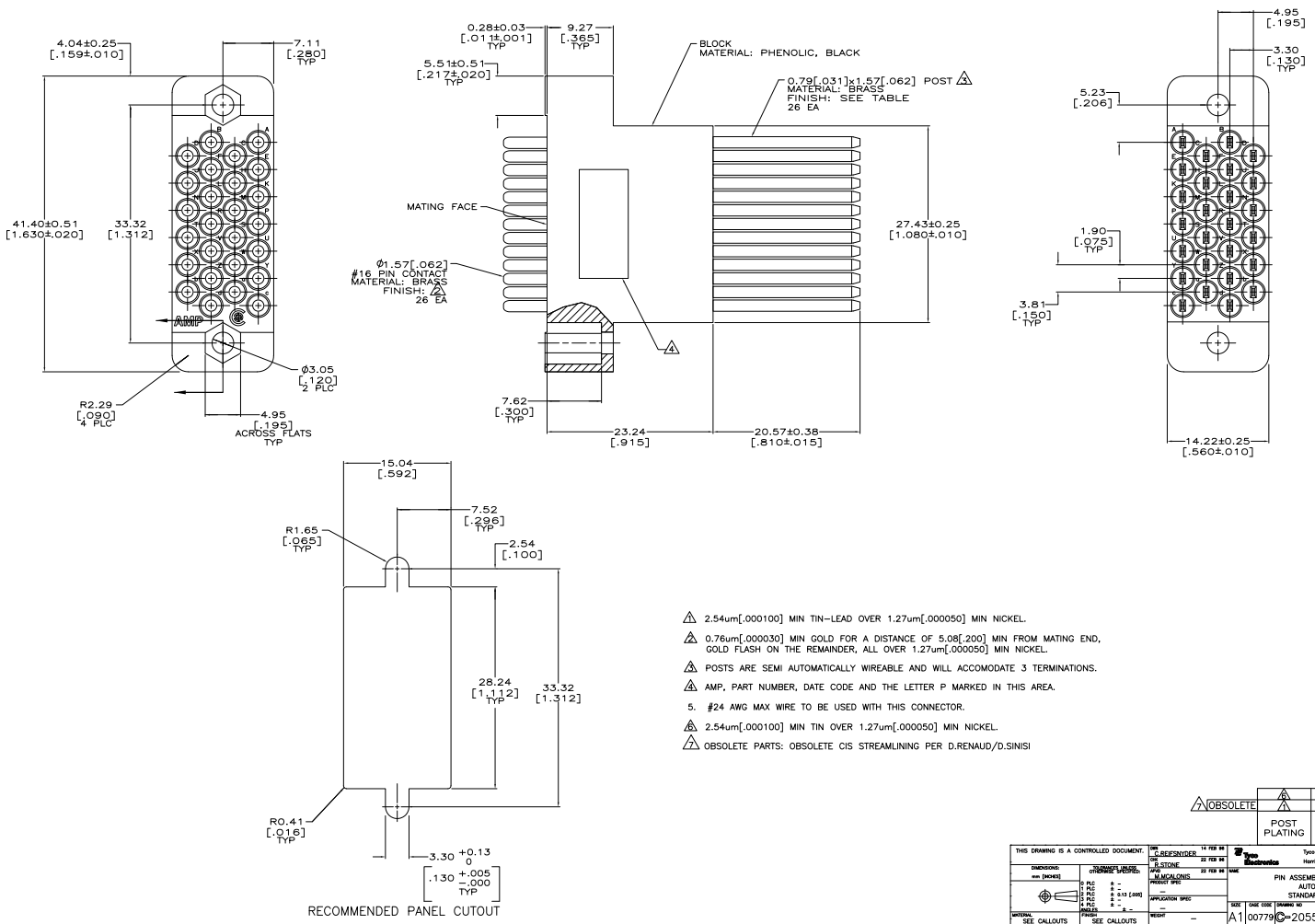


THIS DRAWING IS UNPUBLISHED  
 ALL RIGHTS RESERVED  
 © 2005 TTI ELECTRONICS CORPORATION

REV	DATE	DESCRIPTION	BY	APP
0				
P	5/2/07	REVISED PER ECO-07-010234	SS	GS
P1		REVISED PER ECO-09-020935	088P09	KK AEG



$\Delta$ OBSOLETE	$\Delta$	1-205512-7
	$\Delta$	1-205512-3
	$\Delta$	POST PLATING
	$\Delta$	PART NUMBER

THIS DRAWING IS A CONTROLLED DOCUMENT.		DATE REVISIONED: 14 FEB 07	DATE: 22 FEB 07	DATE: 22 FEB 07	DATE: 22 FEB 07
DRAWING NUMBER: 100779		REV: 1	REV: 1	REV: 1	REV: 1
DRAWING TITLE: PIN ASSEMBLY, 26 POSITION AUTOWIREABLE, STANDING IN SERIES		TITL: PIN ASSEMBLY, 26 POSITION AUTOWIREABLE, STANDING IN SERIES			
DRAWING SCALE: 1:1		SCALE: 1:1			
DRAWING SHEET: 1 OF 1		SHEET: 1 OF 1			
DRAWING PART: 1-205512		PART: 1-205512			
DRAWING CUSTOMER: CUSTOMER DRAWING		CUSTOMER: CUSTOMER DRAWING			