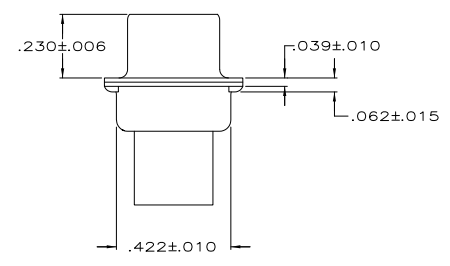
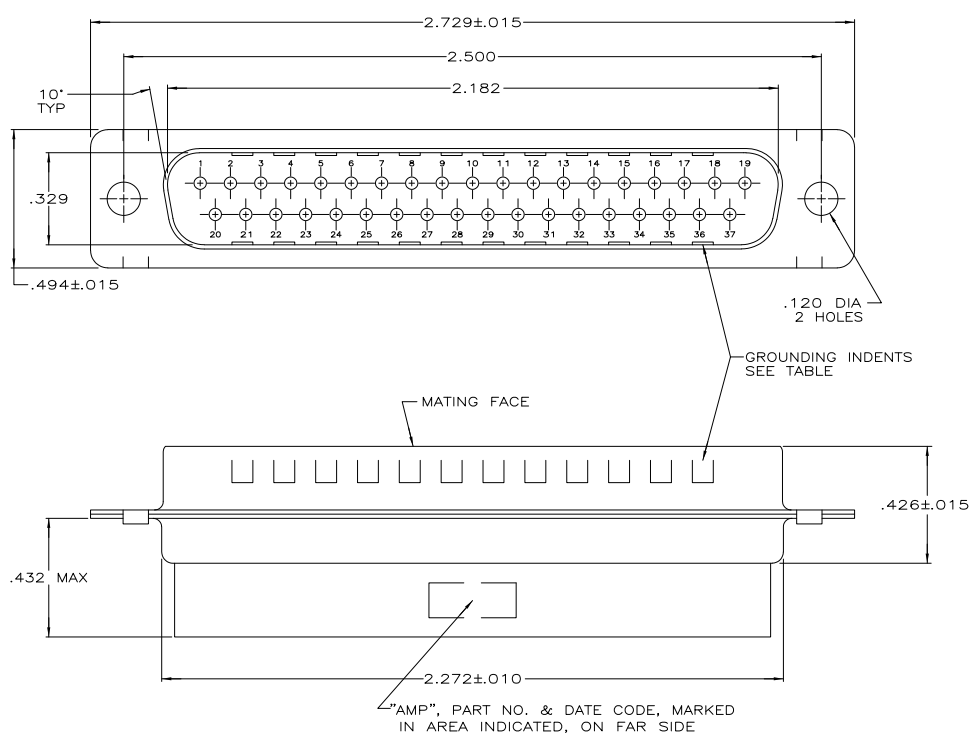


LOC	DIST	REVISIONS		
P	LTR	DESCRIPTION	DATE	BY
GP	00			
K		REVISED PER ECO-11-002006	11APR2011	CJV/CWR



- CONNECTOR ACCEPTS SIZE 20 DF PIN CONTACTS, RETENTION TINES ARE AN INTEGRAL PART OF INSERT.
- CONNECTOR COMPLIES WITH 108-40005 WHERE APPLICABLE.
- MOLDED PART MATERIAL: NYLON, FLAME RETARDANT, 94V-0 RATED, GLASS FILLED, BLACK.
- SHELL MATERIAL: STEEL PER ASTM A109.
- ZINC PLATED PER ASTM B633; TYPE II; CLASS SC1; YELLOW CHROMATE.
- TIN OR TIN-LEAD PLATED OVER COPPER UNDERPLATE.
- TIN PLATED OVER COPPER UNDERPLATE.
- ZINC PLATED .000200-.000400 THICK, YELLOW TRIVALENT CHROMIUM CHROMATE COATING.

PACKAGING TYPE	SHELL FINISH	GROUNDING INDENTS	PART NUMBER
STANDARD	△	NO	205210-8
STANDARD	△	NO	205210-7
OBSOLETE	△	NO	205210-6
STANDARD	△	YES	205210-3
OBSOLETE	△	NO	205210-2
OBSOLETE	△	NO	205210-1

THIS DRAWING IS A CONTROLLED DOCUMENT.		MIN. S. WELDON	7-19-85
DIMENSIONS: INCHES		OK	7-29-85
OTHER DIMENSIONS: MILLIMETERS		J. GERACE	
FINISH		V. KUMAR	7-31-85
MATERIAL		NAME	
FINISH		APPLICATION SPEC	
SHELLS: SEE TABLE		HEIGHT	
		SIZE	A2
		CAGE CODE	00779
		DRAWING NO	C-205210
		RESTRICTED TO	
		CUSTOMER DRAWING	
		SCALE	4:1
		SHEET	1 of 1
		REV	K