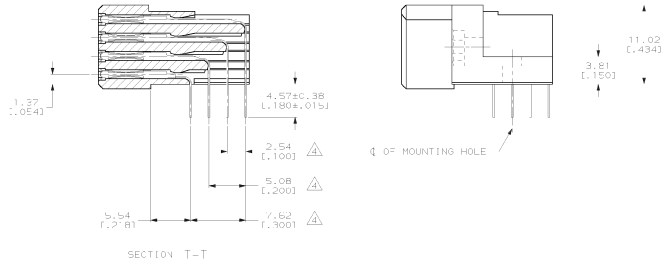
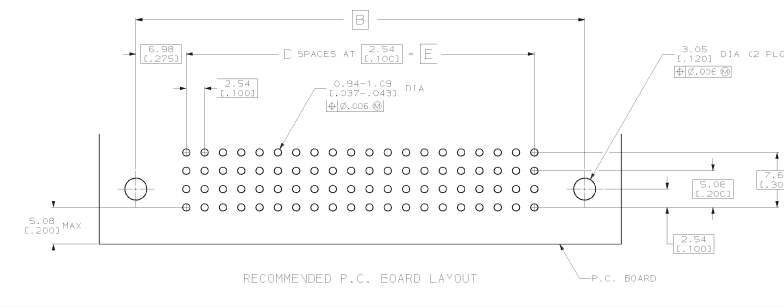
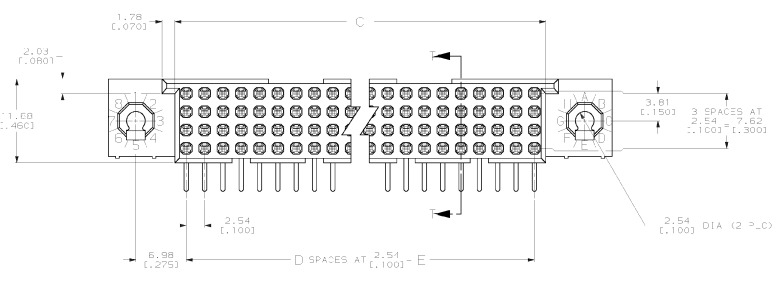
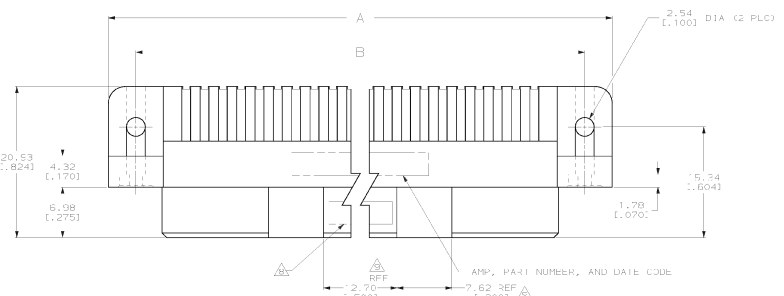


PLEASE NOTE: IN THIS DRAWING, DIMENSIONS ARE IN INCHES UNLESS OTHERWISE SPECIFIED. THIS DRAWING IS UNPUBLISHED. RELEASED FOR PUBLICATION. © COPYRIGHT 19 BY AMP, INCORPORATED. ALL INTERNATIONAL RIGHTS RESERVED.

REV	DATE	BY	CHKD	DESCRIPTION	DATE	APPD
1				REV CON 404213 & ADC710	8-8-9	
2				RE ALLIANCE 3	10-20-92	JG
3				ECN-0010-1268-93 C	11-11-93	SES
4				REVISED PER CON 00-0-0041-93 T, G, H	2-14-95	SES
5				REVISION PER CON 00-0-0044-93 T, S, U	1-20-95	SES
6				ECN-0010-0034-94 TH	11-11-94	SES
7				PER EC 0564-95	1-5-95	SES
8				REV PER EC 0512-0458-97	1-14-97	JHT
9				REV PER 0512-0091-03	2-14-03	JHT



DIM. UNITS		PART NO	
DO NOT SCALE PRINT.	DR. REV. (4/78)	AMP Incorporated	
UNLESS SPECIFIED	DR. DATE (1/78)	Harrisburg, PA 17105-9606	
DIMENSIONS IN INCHES	CHK. 02/26/92	<b>AMP</b> HD., 4 ROW, RECEPTACLE ASSEMBLY, 4.57 (±.180) LONG SOLDER TAILS, .00076 (±.00030) GOLD PLATE	
TOLERANCES: FR.	DR. 11/26/92		
PL. DEC. #	APPD. 12/26/92		
INCHES: #	APPD. 12/26/92		
MILLIS:	DR. 01/26/93	FINISH	
FR. DEC. #	APPD. 01/26/93	APPROX. SPEC.	
MILLIS:	DR. 01/26/93	SIZE	
FR. DEC. #	APPD. 01/26/93	DWG. NO.	
MILLIS:	DR. 01/26/93	REV.	
FR. DEC. #	APPD. 01/26/93	532434	
MILLIS:	DR. 01/26/93	1 OF 2	

CUSTOMER DRAWING

RENDERING: THIS DRAWING IS UNPUBLISHED. RELEASED FOR PUBLICATION BY AMP INCORPORATED. ALL INFORMATION IS RESERVED. COPYRIGHT 19

REV	DATE	BY	CHKD	DESCRIPTION	DATE	APPD
00				SEE CHGCT 1		

- △ HOUSING MATERIAL: THERMOPLASTIC, COLOR: NATURAL.
- △ CONTACT MATERIAL: COPPER ALLOY.
- △ CONTACT FINISH: .00127-.00254 (.000050-.000100) NICKEL UNDERPLATE ALL OVER, .000076 (.000030) GOLD PLATE IN CONTACT AREA, TIN-LEAD PLATED SOLDER TAILS.
- △ SOLDER TAILS MUST FIT HOLE PATTERN AS SHOWN ON THE RECOMMENDED P.C. BOARD LAYOUT.
- △ DIMENSIONS IN BRACKETS ARE IN INCHES.
- △ HOUSINGS WITH CENTER MOUNTING IS RECOMMENDED FOR ASSEMBLIES HAVING 75 CONTACTS OR MORE PER ROW.
- △ OBSOLETE PART NUMBER.
- △ DATE CODE MAY BE LOCATED IN THIS APPROXIMATE AREA FOR THIS PART NUMBER.
- △ QUANTITIES OF VOID CCRING ARE DEPENDENT ON THE POSITION SIZE OF THE HOUSING.

REV	DATE	BY	CHKD	DESCRIPTION	DATE	APPD
00				SEE CHGCT 1		
1				2-532434-5		
2				48.26 (7.900) 9 51.41 (2.024) 52.23 (2.450) 63.85 (2.750) 80 2-532434-4		
3				35.56 (1.400) 4 38.71 (1.524) 49.53 (1.950) 57.15 (2.250) 66 2-532434-3		
4				60.02 (2.360) 6 53.17 (2.124) 73.89 (2.950) 81.61 (3.200) 255 2-532434-2		
5				22.66 (0.900) 3 25.01 (1.024) 36.83 (1.450) 44.45 (1.750) 49 2-532434-1		
6				44.78 (1.760) 5 47.83 (1.924) 58.75 (2.310) 66.37 (2.610) 232 2-532434-0		
7						
8						
9						
10						
11						
12						
13						
14						
15						
16						
17						
18						
19						
20						
21						
22						
23						
24						
25						
26						
27						
28						
29						
30						
31						
32						
33						
34						
35						
36						
37						
38						
39						
40						
41						
42						
43						
44						
45						
46						
47						
48						
49						
50						
51						
52						
53						
54						
55						
56						
57						
58						
59						
60						
61						
62						
63						
64						
65						
66						
67						
68						
69						
70						
71						
72						
73						
74						
75						
76						
77						
78						
79						
80						
81						
82						
83						
84						
85						
86						
87						
88						
89						
90						
91						
92						
93						
94						
95						
96						
97						
98						
99						
100						

DO NOT SCALE PRINT	DR. REV. 1/28/82	AMP	AMP Incorporated
UNLESS SPECIFIED DIMENSIONS IN INCHES	CHK. 02/26/82		Harrisburg, PA 17105-3606
TOLERANCES: .015	DWG. NO. 00779	NAME: HD, 4 ROW, RECEPTACLE ASSEMBLY, 1.57 (.180) LONG SOLDER TAILS, .00076 (.000030) GOLD PLATE	
PL. DEC. #	APD. 12/26/82	DATE CODE: 00779	
SCALE DEC. # 6.19 (E.08)	APD. 12/26/82	DRAWING NO: 532434	
UNLESS OTHERWISE SPECIFIED	APD. 12/26/82	SHEET: 2 OF 2	
FINISH: △	APPROVATION SPEC: -	PART NUMBER: 532434	
	REVISION: -	CUSTOMER DRAWING	