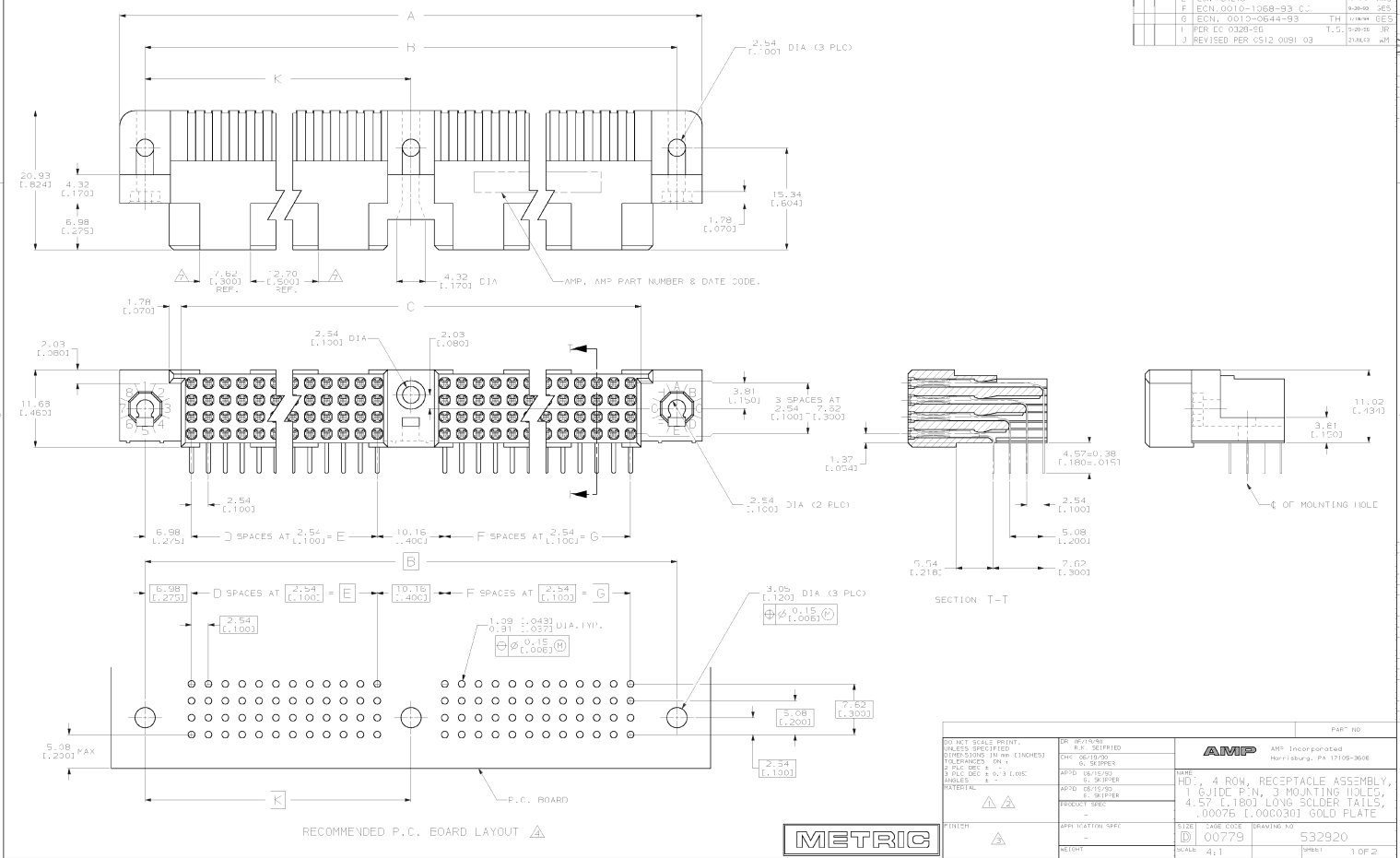


TRADE NAME IN THIS TITLE PROHIBITED
 THIS DRAWING IS UNPUBLISHED. RELEASED FOR PUBLICATION
 BY AMP INCORPORATED. ALL INTERNATIONAL RIGHTS RESERVED.
 © COPYRIGHT 19

REV	DATE	BY	CHK	APP	DESCRIPTION	DATE	APP
L	04/02/18				NEW REV		RES
F	ECN 0010-1068-93 C				RES		RES
G	ECN 0010-0644-93				TH		RES
I	PER EC 0328-50				T.S.		RES
J	REVISED PER CS12 0091 03				STAKS		RES



DIM. MET. SCALE PRINT.		DR. REV. (N/A)		PART NO.	
UNLESS SPECIFIED	IN INCHES	OR	AS SHOWN	AMP Incorporated	
ALL DIMENSIONS	IN MM (ENGLISH)	OR	AS SHOWN	Harrisburg, Pa 17105-9606	
PLACEMENT	OR	OR	OR	NAME	
PLACEMENT	OR	OR	OR	HD: 4 ROW; RECEPTACLE ASSEMBLY,	
PLACEMENT	OR	OR	OR	1 GUIDE PIN, 3 MOUNTING HOLES,	
PLACEMENT	OR	OR	OR	4.57 (L.180) LONG SOLDER TAILS,	
PLACEMENT	OR	OR	OR	.00076 (L.000030) GOLD PLATE	
FINISH	APPROXIMATION SPEC	SIZE	DATE CODE	DRAWING NO.	
				532920	
				1 OF 2	



CUSTOMER DRAWING

21-111-03 14-11-15 1015413 / 2011/06/26/03/012-001-03

REV. NO.	DATE	BY	CHKD.	LIT.	DESCRIPTION	DATE	APP'D.
AD	25			J	SEE CHART 1		

THIS DRAWING IS UNPUBLISHED. RELEASED FOR PUBLICATION. 19
 © COPYRIGHT 19 BY AMP INCORPORATED. ALL INTERNATIONAL RIGHTS RESERVED.

HOUSING MATERIAL: THERMOPLASTIC, COLOR-NATURAL.
 CONTACT MATERIAL: COPPER ALLOY.
 CONTACT FINISH: .00127-.00254 (.000050-.000100) NICKEL UNDERPLATE ALL OVER; .00076 (.000030) GOLD PLATE IN CONTACT AREA, TIN-LEAD PLATED SOLDER TAILS.
 SOLDER TAILS MUST FIT HOLE PATTERN AS SHOWN ON THE RECOMMENDED P.C. BOARD LAYOUT.
 DIMENSIONS IN BRACKETS ARE IN INCHES.
 PART NUMBER IS OBSOLETE.
 QUANTITIES OF VOID CORING ARE DEPENDENT ON THE POSITION SIZE OF THE HOUSING.

	K	G	F	E	D	C	B	A	POSN	PART NUMBER
	154.46	152.40	52.40	60	318.11	328.93	336.55			532920-9
	[6.475]	[6.000]	[2.063]	[2.362]	[12.524]	[13.000]	[13.250]			488 532920-8
	156.84	144.78	44.78	57	302.87	313.69	321.31			532920-7
	[6.194]	[5.700]	[1.760]	[2.244]	[11.924]	[12.350]	[12.650]			464 532920-6
	149.22	137.16	37.16	54	297.63	298.45	306.07			532920-6
	[5.875]	[5.400]	[1.463]	[2.125]	[11.824]	[11.750]	[12.050]			440 532920-5
	141.60	129.54	29.54	51	272.39	283.21	230.83			532920-5
	[5.575]	[5.100]	[1.181]	[2.008]	[10.724]	[11.150]	[9.450]			415 532920-4
	133.68	121.62	21.62	48	257.15	267.97	276.59			532920-4
	[5.275]	[4.800]	[0.860]	[1.937]	[10.124]	[10.550]	[10.850]			392 532920-3
	126.36	114.30	14.30	45	241.91	252.73	250.35			532920-3
	[4.975]	[4.500]	[0.563]	[1.731]	[9.524]	[9.950]	[10.250]			368 532920-2
	118.74	106.68	6.68	42	226.67	237.49	245.11			532920-2
	[4.675]	[4.200]	[0.267]	[1.642]	[8.924]	[9.350]	[9.650]			344 532920-1
	111.12	99.06	9.06	39	211.43	222.25	220.87			532920-1
	[4.375]	[3.900]	[0.363]	[1.500]	[8.324]	[8.750]	[8.950]			320 532920-0

<p>DO NOT SCALE PRINT.</p> <p>UNLESS SPECIFIED DIMENSIONS IN INCHES) DIMENSIONS IN MILLIMETERS .0001 INCHES .001 INCHES .002 INCHES .005 INCHES .010 INCHES .020 INCHES .050 INCHES .100 INCHES .200 INCHES .500 INCHES 1.000 INCHES</p> <p>UNLESS OTHERWISE SPECIFIED MATERIAL: -</p> <p>FINISH: -</p> <p>REVISIONS: -</p>	<p>DR. REVISED</p> <p>CHK. 06/10/92</p> <p>APD. 06/15/92</p> <p>PRD. 06/15/92</p> <p>APP. 06/15/92</p> <p>DATE: 06/15/92</p> <p>NAME: HD. 4 ROW; RECEPTACLE ASSEMBLY, 1 GUIDE PIN, 3 MOUNTING HOLES, 4.57 (.180) LONG SOLDER TAILS, .00076 (.000030) GOLD PLATE</p> <p>SIZE: 4:1</p> <p>DWG. NO: 532920</p> <p>SHEET: 2 OF 2</p>
---	--

CUSTOMER DRAWING