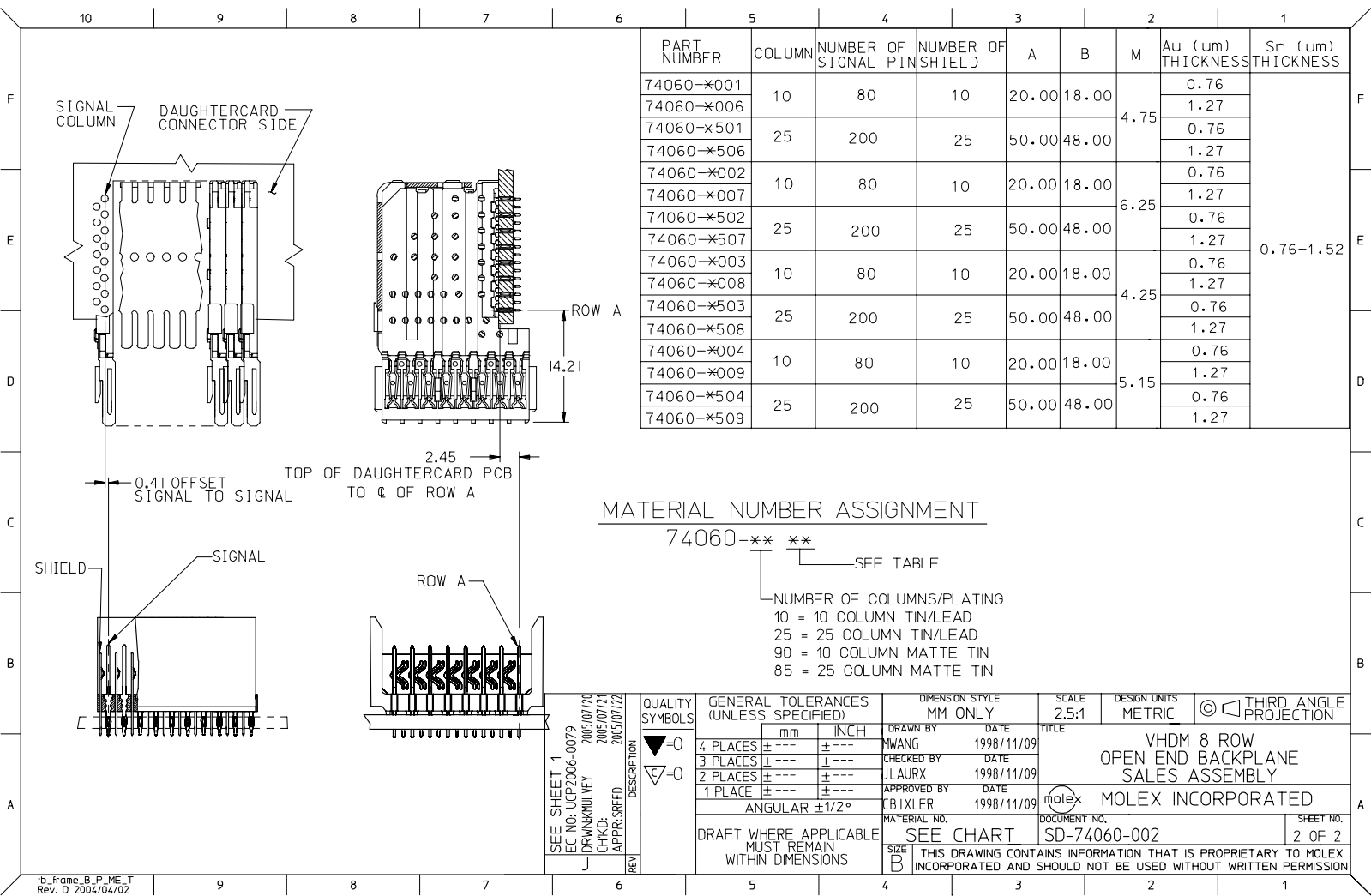


- NOTES:
- MATERIALS:
HOUSING - LIQUID CRYSTAL POLYMER (LCP),
GLASS-FILLED, UL 94V-0, COLOR: BLACK
SIGNAL PIN & SHIELD - COPPER ALLOY
 - FINISHES:
CONTACT AREA: SELECTIVE GOLD (Au)
PCB TAILS: SELECTIVE TIN/LEAD (Sn/Pb)
OR SELECTIVE MATTE TIN (Sn)
NICKEL (Ni) OVERALL.
 - THIS PART CONFORMS TO MOLEX PRODUCT SPECIFICATION PS-74031-999
 - FOR MIXED CONTACT LENGTHS CONSULT MOLEX FOR AVAILABILITY
 - FOR SPECIFIC MATERIAL NUMBERS & MATING INFORMATION REFER TO SHEET 2
 - PACKAGE PER PK-74060-003
 - EITHER MARK PART WITH PART NUMBER & DATE CODE APPROXIMATELY WHERE SHOWN OR PLACE LABEL ON THE TUBE.

BACKPLANE HOLE PATTERN
RECOMMENDED DIMENSION

REV	DESCRIPTION	QUALITY SYMBOLS		GENERAL TOLERANCES (UNLESS SPECIFIED)		DIMENSION STYLE		SCALE	DESIGN UNITS	THIRD ANGLE PROJECTION
		mm	INCH	mm	INCH	MM ONLY	MM ONLY			
J	ADD LEADFREE PINS EC NO: LCP2006-0079 DRAWN: MULLVEY CHKD: 2005/07/17 APPR: SREED 2005/07/17	4 PLACES	±	±	±	MM ONLY	MM ONLY	2.5:1	METRIC	THIRD ANGLE PROJECTION
		3 PLACES	±	±	±					
		2 PLACES	±	±	±					
		1 PLACE	±	±	±					
		ANGULAR ±1/2°								
		DRAFT WHERE APPLICABLE MUST REMAIN WITHIN DIMENSIONS								
		DRAWN BY: MWANG		DATE: 1998/11/09		TITLE: VHDM 8 ROW OPEN END BACKPLANE SALES ASSEMBLY				
		CHECKED BY: JLAURX		DATE: 1998/11/09		APPROVED BY: CBIXLER		DATE: 1998/11/09		
		MATERIAL NO. SEE SHEET 2		DOCUMENT NO. SD-74060-002		MOLEX INCORPORATED				
						SIZE B		THIS DRAWING CONTAINS INFORMATION THAT IS PROPRIETARY TO MOLEX INCORPORATED AND SHOULD NOT BE USED WITHOUT WRITTEN PERMISSION		1 OF 2



PART NUMBER	COLUMN	NUMBER OF SIGNAL PIN	NUMBER OF SHIELD	A	B	M	Au (um) THICKNESS	Sn (um) THICKNESS
74060-×001							0.76	0.76-1.52
74060-×006	10	80	10	20.00	18.00	4.75	1.27	
74060-×501							0.76	
74060-×506	25	200	25	50.00	48.00		1.27	
74060-×002							0.76	
74060-×007	10	80	10	20.00	18.00	6.25	1.27	
74060-×502							0.76	
74060-×507	25	200	25	50.00	48.00		1.27	
74060-×003							0.76	
74060-×008	10	80	10	20.00	18.00	4.25	1.27	
74060-×503							0.76	
74060-×508	25	200	25	50.00	48.00		1.27	
74060-×004							0.76	
74060-×009	10	80	10	20.00	18.00	5.15	1.27	
74060-×504							0.76	
74060-×509	25	200	25	50.00	48.00		1.27	

MATERIAL NUMBER ASSIGNMENT

74060-×× ××
 SEE TABLE
 NUMBER OF COLUMNS/PLATING
 10 = 10 COLUMN TIN/LEAD
 25 = 25 COLUMN TIN/LEAD
 90 = 10 COLUMN MATTE TIN
 85 = 25 COLUMN MATTE TIN

SEE SHEET 1 EC NO: LCP2006-0079 DRAWN: KILLEY 2005/07/20 CHKD: 2005/07/21 APPR: SREED 2005/07/22	QUALITY SYMBOLS	GENERAL TOLERANCES (UNLESS SPECIFIED)	DIMENSION STYLE	SCALE	DESIGN UNITS	THIRD ANGLE PROJECTION															
	$\nabla=0$ $\sphericalangle=0$	<table border="1"> <tr><th></th><th>mm</th><th>INCH</th></tr> <tr><td>4 PLACES</td><td>±---</td><td>±---</td></tr> <tr><td>3 PLACES</td><td>±---</td><td>±---</td></tr> <tr><td>2 PLACES</td><td>±---</td><td>±---</td></tr> <tr><td>1 PLACE</td><td>±---</td><td>±---</td></tr> </table>		mm	INCH	4 PLACES	±---	±---	3 PLACES	±---	±---	2 PLACES	±---	±---	1 PLACE	±---	±---	MM ONLY	2.5:1	METRIC	
		mm	INCH																		
	4 PLACES	±---	±---																		
3 PLACES	±---	±---																			
2 PLACES	±---	±---																			
1 PLACE	±---	±---																			
DRAWN BY: MWANG CHECKED BY: JLAURX APPROVED BY: CBIXLER	TOLERANCES: ±1/2° DRAFT WHERE APPLICABLE MUST REMAIN WITHIN DIMENSIONS	DATE: 1998/11/09 DATE: 1998/11/09 DATE: 1998/11/09	TITLE: VHDM 8 ROW OPEN END BACKPLANE SALES ASSEMBLY MOLEX INCORPORATED																		
MATERIAL NO. SEE CHART DOCUMENT NO. SD-74060-002	THIS DRAWING CONTAINS INFORMATION THAT IS PROPRIETARY TO MOLEX INCORPORATED AND SHOULD NOT BE USED WITHOUT WRITTEN PERMISSION					STEEL NO. 2 OF 2															