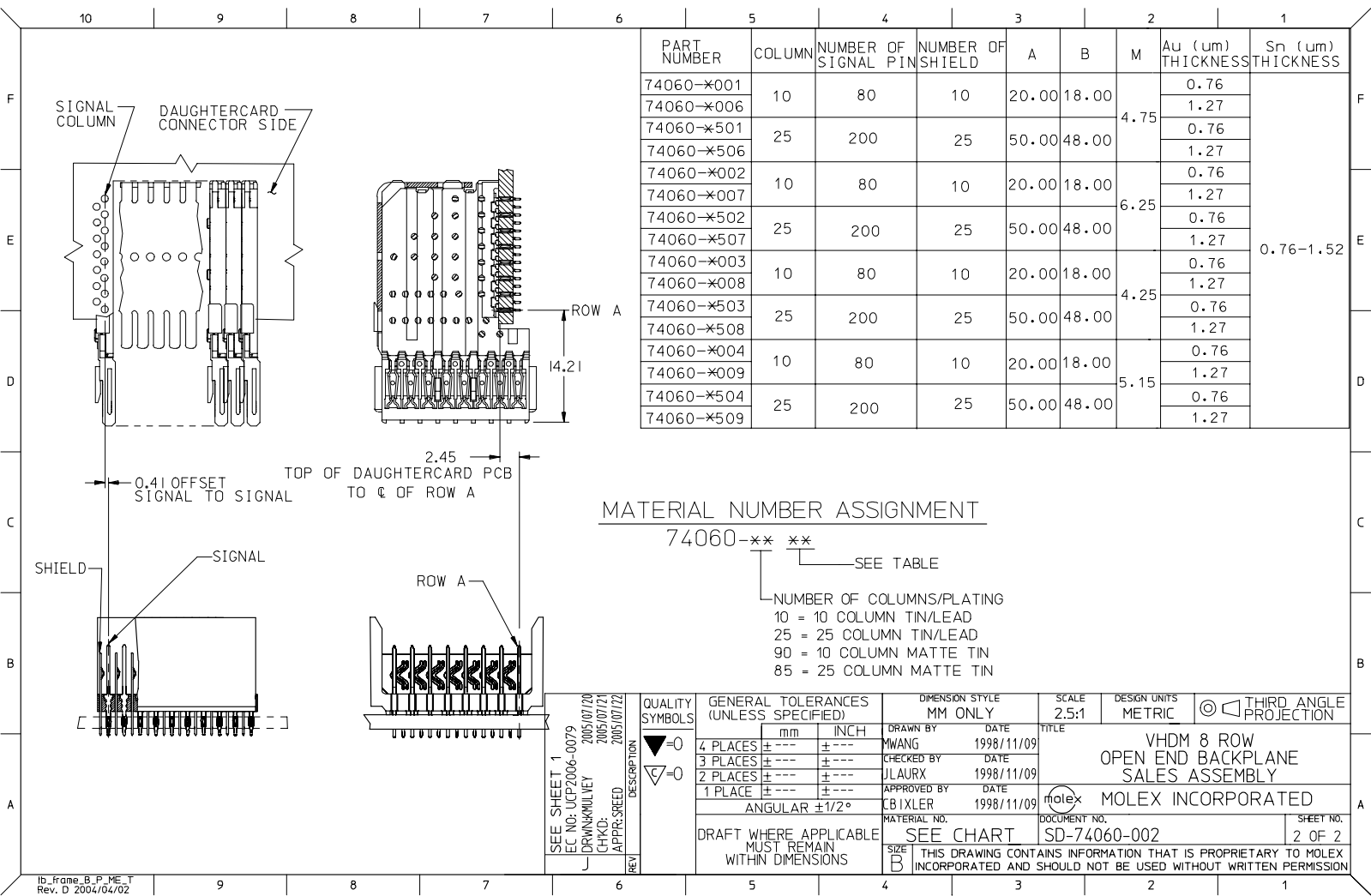


BACKPLANE HOLE PATTERN
RECOMMENDED DIMENSION

- NOTES:
- MATERIALS:
HOUSING - LIQUID CRYSTAL POLYMER (LCP),
GLASS-FILLED, UL 94V-0, COLOR: BLACK
SIGNAL PIN & SHIELD - COPPER ALLOY
 - FINISHES:
CONTACT AREA: SELECTIVE GOLD (Au)
PCB TAILS: SELECTIVE TIN/LEAD (Sn/Pb)
OR SELECTIVE MATTE TIN (Sn)
NICKEL (Ni) OVERALL.
 - THIS PART CONFORMS TO MOLEX PRODUCT SPECIFICATION PS-74031-999
 - FOR MIXED CONTACT LENGTHS CONSULT MOLEX FOR AVAILABILITY
 - FOR SPECIFIC MATERIAL NUMBERS & MATING INFORMATION REFER TO SHEET 2
 - PACKAGE PER PK-74060-003
 - EITHER MARK PART WITH PART NUMBER & DATE CODE APPROXIMATELY WHERE SHOWN OR PLACE LABEL ON THE TUBE.

ADD LEADFREE PNs EC NO: LCP2006-0079 DRAWN: MWANG CHKD: JL AURX APPR: CBIXLER 2005/07/20 2005/07/21 2005/07/22	QUALITY SYMBOLS ▽=0 ▽=0	GENERAL TOLERANCES (UNLESS SPECIFIED)		DIMENSION STYLE	SCALE	DESIGN UNITS	THIRD ANGLE PROJECTION	
				MM ONLY	2.5:1	METRIC		
				DRAWN BY	DATE	TITLE		
				CHECKED BY	DATE	VHDM 8 ROW OPEN END BACKPLANE SALES ASSEMBLY		
		ANGULAR ±1/2°		APPROVED BY	DATE	MOLEX INCORPORATED		
		DRAFT WHERE APPLICABLE MUST REMAIN WITHIN DIMENSIONS		MATERIAL NO.	DOCUMENT NO.	SEE SHEET 2 SD-74060-002		
				SIZE	THIS DRAWING CONTAINS INFORMATION THAT IS PROPRIETARY TO MOLEX INCORPORATED AND SHOULD NOT BE USED WITHOUT WRITTEN PERMISSION			



PART NUMBER	COLUMN	NUMBER OF SIGNAL PIN	NUMBER OF SHIELD	A	B	M	Au (um) THICKNESS	Sn (um) THICKNESS
74060-×001							0.76	0.76-1.52
74060-×006	10	80	10	20.00	18.00	4.75	1.27	
74060-×501							0.76	
74060-×506	25	200	25	50.00	48.00		1.27	
74060-×002							0.76	
74060-×007	10	80	10	20.00	18.00	6.25	1.27	
74060-×502							0.76	
74060-×507	25	200	25	50.00	48.00		1.27	
74060-×003							0.76	
74060-×008	10	80	10	20.00	18.00	4.25	1.27	
74060-×503							0.76	
74060-×508	25	200	25	50.00	48.00		1.27	
74060-×004							0.76	
74060-×009	10	80	10	20.00	18.00	5.15	1.27	
74060-×504							0.76	
74060-×509	25	200	25	50.00	48.00		1.27	

MATERIAL NUMBER ASSIGNMENT

74060-×× ××
 SEE TABLE
 NUMBER OF COLUMNS/PLATING
 10 = 10 COLUMN TIN/LEAD
 25 = 25 COLUMN TIN/LEAD
 90 = 10 COLUMN MATTE TIN
 85 = 25 COLUMN MATTE TIN

SEE SHEET 1 EC NO: LCP2006-0079 DRAWN: KILLEY 2005/07/20 CHKD: 2005/07/21 APPR: SREED 2005/07/22	QUALITY SYMBOLS	GENERAL TOLERANCES (UNLESS SPECIFIED)	DIMENSION STYLE	SCALE	DESIGN UNITS	THIRD ANGLE PROJECTION										
	$\nabla=0$ $\sphericalangle=0$	<table border="1"> <tr><th>mm</th><th>INCH</th></tr> <tr><td>4 PLACES ±---</td><td>±---</td></tr> <tr><td>3 PLACES ±---</td><td>±---</td></tr> <tr><td>2 PLACES ±---</td><td>±---</td></tr> <tr><td>1 PLACE ±---</td><td>±---</td></tr> </table>	mm	INCH	4 PLACES ±---	±---	3 PLACES ±---	±---	2 PLACES ±---	±---	1 PLACE ±---	±---	MM ONLY	2.5:1	METRIC	
	mm	INCH														
	4 PLACES ±---	±---														
3 PLACES ±---	±---															
2 PLACES ±---	±---															
1 PLACE ±---	±---															
DRAFT WHERE APPLICABLE MUST REMAIN WITHIN DIMENSIONS	DRAWN BY: MWANG 1998/11/09 CHECKED BY: JLAURX 1998/11/09 APPROVED BY: CBIXLER 1998/11/09	TITLE	VHDM 8 ROW OPEN END BACKPLANE SALES ASSEMBLY													
MATERIAL NO. SEE CHART SIZE B	DOCUMENT NO. SD-74060-002	MOLEX INCORPORATED			STEEL NO. 2 OF 2											