

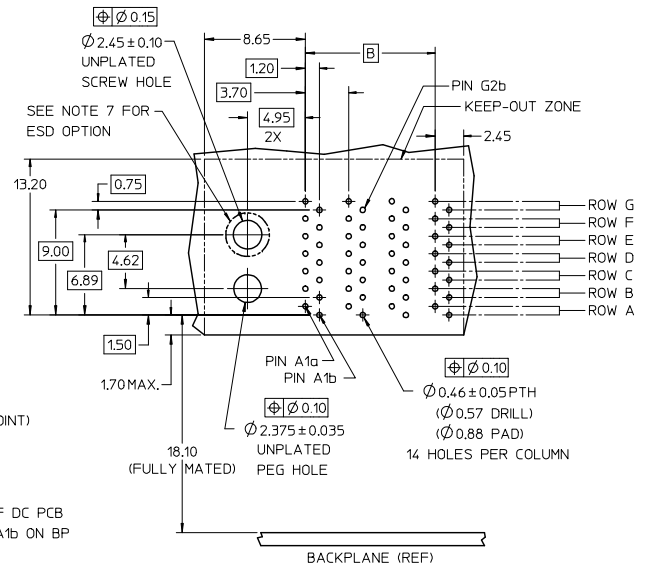
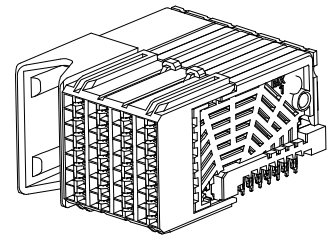
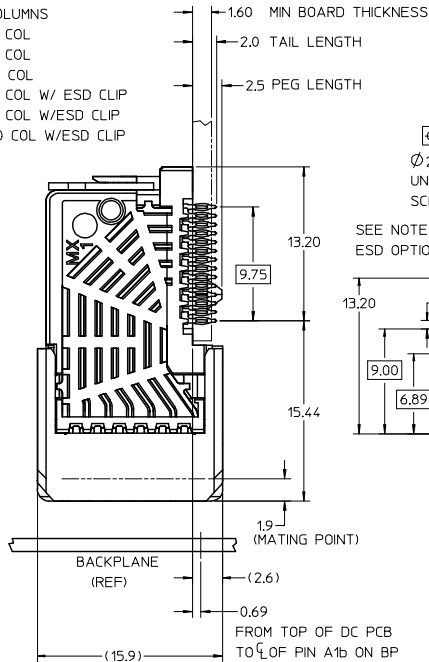
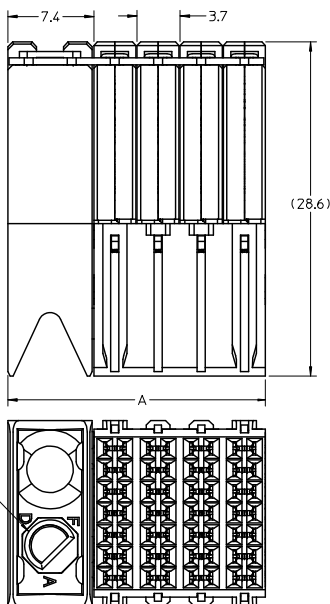
MATERIAL NUMBER	# OF COLUMNS	DIM. 'A' MAX.	DIM. 'B'
76020-**04	4	22.20	11.10
76020-**06	6	29.60	18.50
76020-**10	10	44.40	33.30

76020-\*\*\*\*

MODULE TYPE -- TAIL PLATING TYPE  
 GUIDE LEFT -- TIN/LEAD = 2  
 GUIDE LEFT -- TIN ONLY = 3

POLARIZATION KEY ORIENTATION  
 0 = NO KEY  
 1 = A  
 2 = B  
 3 = C  
 4 = D  
 5 = E  
 6 = F  
 7 = G  
 8 = H

# OF COLUMNS  
 04 = 4 COL  
 06 = 6 COL  
 10 = 10 COL  
 54 = 4 COL W/ ESD CLIP  
 56 = 6 COL W/ESD CLIP  
 50 = 10 COL W/ESD CLIP



DAUGHTERCARD HOLE PATTERN  
(CONNECTOR SIDE)

- NOTES:
- MATERIALS: HOUSING - LIQUID CRYSTAL POLYMER (LCP) GLASS-FILLED, UL 94V-0  
TERMINALS - HIGH PERFORMANCE COPPER ALLOY
  - FINISH: 30µIN MIN. GOLD IN CONTACT AREA  
SELECTIVE TIN/LEAD (-2\*\*\*) OR SELECTIVE TIN (-3\*\*\*)  
ON PCB TAILS, NICKEL OVERALL.
  - REFER TO MOLEX PRODUCT SPECIFICATION PS-75710-999 FOR PERFORMANCE SPECS.
  - PRODUCT IS PACKAGED PER PK-70873-607.
  - THIS PART CONFORMS TO CLASS B REQUIREMENTS OF COSMETIC SPEC PS-45499-002.
  - GUIDED PARTS TO BE SHIPPED WITH 2-32 TYPE AB  
SELF-TAPPING SCREW P/N 73726-0005.
  - FOR GROUNDED GUIDE MODULES USE DIA 2.45+/-0.10 (PTH), DIA 2.58 (DRILL),  
AND DIA 4.50 (PAD).

ADD ESD OPTION	QUALITY SYMBOLS	GENERAL TOLERANCES (UNLESS SPECIFIED)		DIMENSION STYLE		SCALE	DESIGN UNITS	THIRD ANGLE PROJECTION
		mm	INCH	MM ONLY	DATE			
EC NO: UEP2008-2813 DRAWN: MCARRANZA 2008/09/10 CHKD: JLAURX 2008/09/10 APPR: JLAURX 2008/09/11	DESCRIPTION	4 PLACES	± 0.13	± 0.005	DRAWN BY	3/20/06	METRIC	I-TRAC DAUGHTERCARD 7 ROW GUIDE LEFT SIGNAL MODULE
		3 PLACES	± 0.25	± 0.010	CHECKED BY	DATE		
		2 PLACES	± 0.25	± 0.010	APPROVED BY	DATE		
		1 PLACE	± 0.25	± 0.010	JLAURX	2007/03/07		MOLEX INCORPORATED
		ANGULAR ± 1/2°		MATERIAL NO.		SD-76020-002		SHEET NO. 1 OF 1
DRAFT WHERE APPLICABLE MUST REMAIN WITHIN DIMENSIONS		SEE CHART		THIS DRAWING CONTAINS INFORMATION THAT IS PROPRIETARY TO MOLEX INCORPORATED AND SHOULD NOT BE USED WITHOUT WRITTEN PERMISSION				