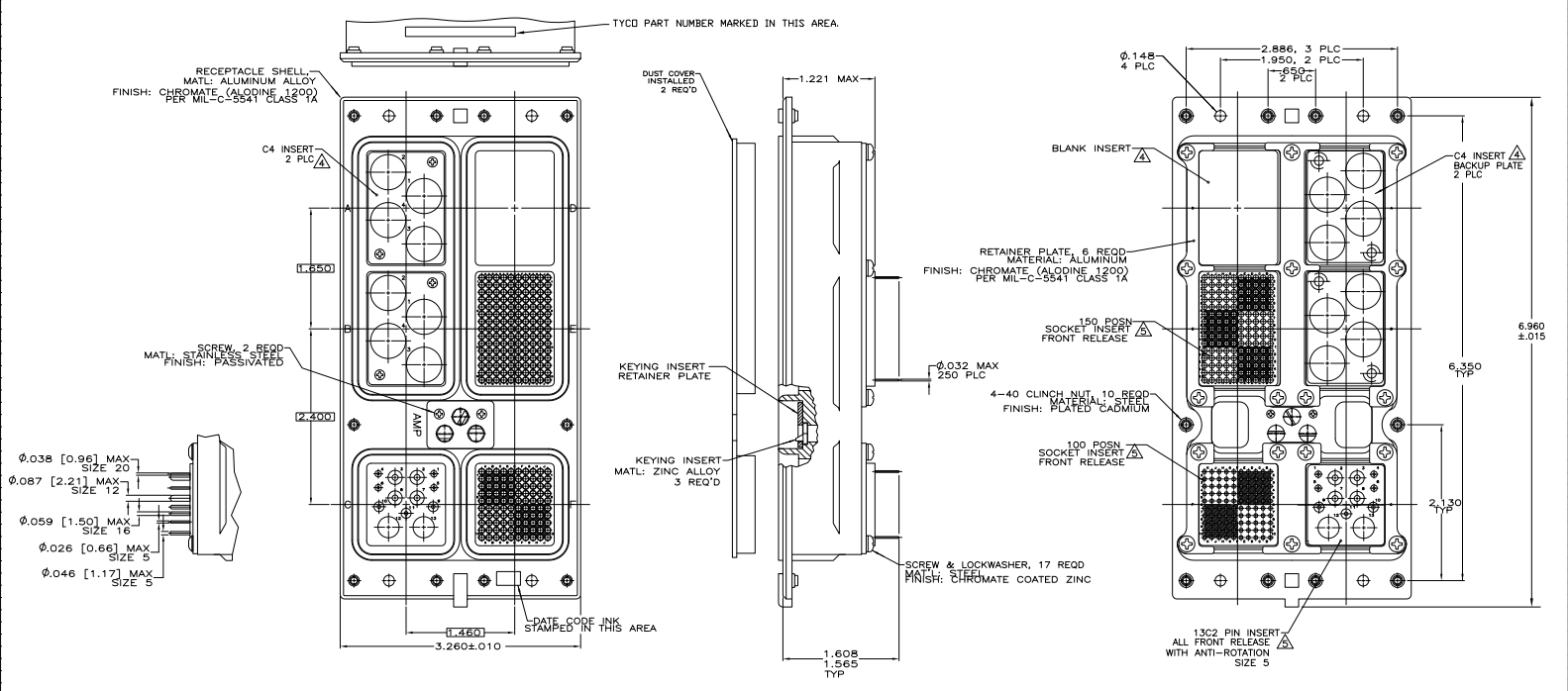


REV	DATE	DESCRIPTION	BY	CHK	APP
1					
2					
3					
4					
5					
6					
7					
8					



- CONNECTOR DIMENSIONS ARE PER ARINC 600 SPECIFICATION
- FOLLOWING CONTACTS ARE INCLUDED AND LOADED:
 - SIZE 22 SOCKET: AMP P/N 1-211431-4; QTY=400
 - SIZE 20 PIN CONTACT: P/N 1663533-3; QTY=4
 - SIZE 18 PIN: 1663128-6; QTY: 3
 - SIZE 12 PIN: 1663129-6; QTY: 4
 - SIZE 5 COAX: P/N 1863335-2; QTY=1 (POSTED CONTACT) IN POSN 12
 - SIZE 5 COAX: P/N 1863339-1; QTY=1 (SIZE 5 TO SMB ADAPTER) IN POSN 13
 - ALL SOLDER POSTS ARE SOLDER DIPPED.
- POLARIZING KEYS ARE INSTALLED IN POSITION 40.
- INSERT MATERIAL: DIE CAST ALUMINUM PER ASTM-B-85,
 INSERT FINISH: CLASS 1A CHROMATE PER MIL-STD-5541
- INSERT MATERIAL: THERMOPLASTIC OR THERMOSET EPOXY.
- SIZE 1 COAX CONTACTS NOT INCLUDED,
 MUST BE ORDERED SEPARATELY
- THE C4 INSERT BACKUP PLATES AND SCREWS ARE ASSEMBLED
 TO CONNECTOR

1484510-1
 PART
 NUMBER

THIS DRAWING IS A CONTROLLED DOCUMENT.		DATE: 10/14/03	REV: 1	REVISED PER EDO-10-010827
DESIGNER: [Signature]	ENGINEER: [Signature]	DATE: 10-24-03	DATE: 10-24-03	DATE: 10-24-03
WORKS: [Signature]	INSPECTOR: [Signature]	DATE: 10-24-03	DATE: 10-24-03	DATE: 10-24-03
SEE CALLOUTS	SEE CALLOUTS	SEE CALLOUTS	SEE CALLOUTS	SEE CALLOUTS
RESTRICTED CUSTOMER		SIZE: A1	DATE: 100779	DRAWING NO: 1484510
		REV: 1	REV: 1	REV: 1

