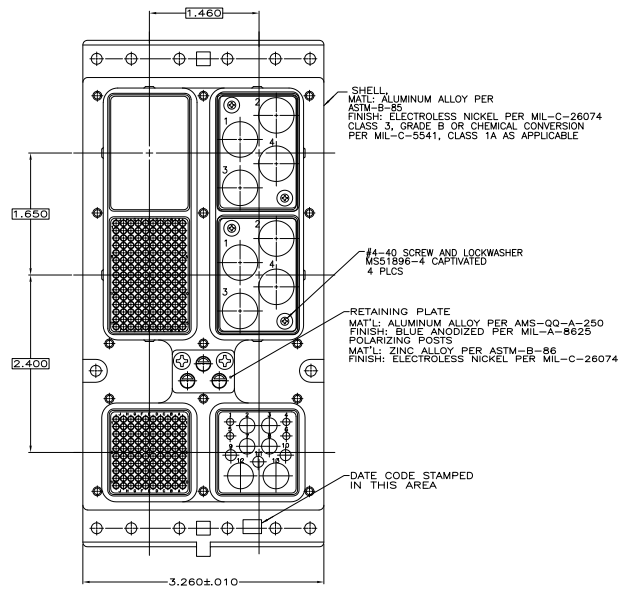
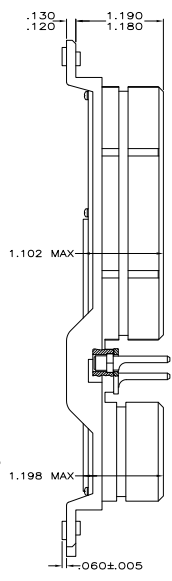
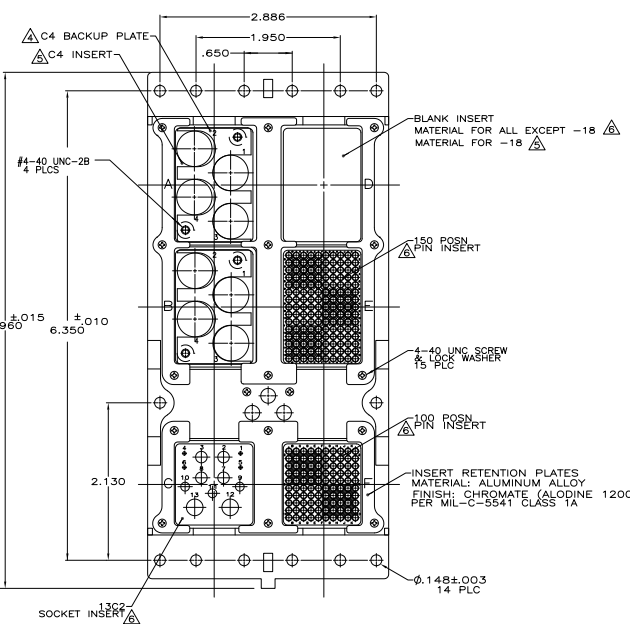


THIS DRAWING IS UNCLASSIFIED  
 UNLESS INDICATED OTHERWISE  
 © 2008 BY TYS ELECTRONICS CORPORATION ALL RIGHTS RESERVED

REV	DATE	DESCRIPTION	BY	CHK	APP
1					
2					
3					
4					
5					
6					
7					
8					



PRELIMINARY NOT RELEASED FOR PRODUCTION

- CONTACTS ARE INCLUDED IN A CONTAINER WITHIN THE CONNECTOR PACKAGE WHEN CONNECTOR IS ORDERED WITH CONTACTS.
  - ALL CONTACT CAVITIES IN MODULES E & F TO BE LOCATED WITHIN .006 TRUE POSITION DIA. ALL CONTACT CAVITIES IN MODULES A, B & C TO BE LOCATED WITHIN .020 TRUE POSITION DIA.
  - POLARIZING KEYS SHOWN IN POSITION 01 FOR ILLUSTRATION ONLY. CONNECTORS SHIPPED WITH KEYING PER ORDERING INSTRUCTIONS.
- C4 BACKUP PLATES & SCREWS ARE ASSEMBLED TO CONNECTOR.
  - INSERT MATERIAL: MACHINED ALUMINUM INSERT FINISH: PER MIL-C-5541.
  - INSERT MATERIAL: THERMOSET
  - C4 BACKUP PLATES ALLOWED COAX TO ROTATE IN CONTACT CAVITY.

PART NO.	DESCRIPTION	REV.
NIC66K36C40CD0	KEYED 40, SEMI-ENVIRONMENTAL W/CONTACTS, W/CLINCH NUTS	1-445717-9
SPECIAL	W/ DUSTCOVERS, KEYED 40, NON ENVIRONMENTAL W/ SIGNAL AND POWER CONTACTS INCLUDED W/COAX CONTACTS (2 SIZE 5 225791-2 & 8 SIZE 1 446849-5)	1-445717-8
NIC66K36C40CD1	KEYED 40, SEMI-ENVIRONMENTAL, W/O CONTACTS, W/CLINCH NUTS	1-445717-7
SPECIAL	W/ DUSTCOVERS, KEYED 40, NON ENVIRONMENTAL, W/O COAX CONTACTS W/OTHER CONTACTS.	1-445717-6
NIC66K36A40SC1	KEYED 40, NON-ENVIR, W/ CONTACTS, W/(8) 6-32 CLINCH NUTS	1-445717-5
-	PRELIMINARY PART NUMBER	1-445717-4
NIC66K36C01CD1	CUSTOMER RESTRICTED - SEE CUSTOMER DWG. 1-445717-3	1-445717-3
SPECIAL	KEYED 40, SEMI-ENVIR WITH CONTACTS, SPECIAL C4 PLATES	1-445717-2
NIC66K36C40CD1	CUSTOMER RESTRICTED - SEE CUSTOMER DWG. 1-445717-1	1-445717-1
SPECIAL	KEYED 40, NON ENVIR WITH CONTACTS, NO COAX	1-445717-0
SPECIAL	BAC06801	445717-9
SPECIAL	KEYED 40, SEMI-ENVIR, WITH POWER CONTACTS, STD MTG	445717-8
SPECIAL	CUSTOMER RESTRICTED	445717-7
NIC66K36A40SC1	KEYED 40, NON-ENVIR, W/O CONTACTS, W/(10) 4-40 CLINCH NUTS	445717-6
NIC66K36A40CD1	KEYED 40, NON-ENVIR, W/O CONTACTS, W/(8) 6-32 CLINCH NUTS	445717-5
-	KEYED 40, NON-ENVIR, W/CONTACTS, W/O COAX, W/O CLINCH NUTS	445717-4
NIC66K36A40AA1	KEYED 40, NON ENVIRONMENTAL, W/O CONTACTS	445717-3
NIC66K36C40AA0	KEYED 40, SEMI-ENVIRONMENTAL, W/O COAX, W/CONTACTS	445717-2
NIC66K36C40AA1	KEYED 40, SEMI-ENVIRONMENTAL, W/O CONTACTS	445717-1
DESCRIPTIVE NO.	DESCRIPTION	PART NO.

THIS DRAWING IS A CONTROLLED DOCUMENT. DATE: 11-18-08

DESIGNED BY: J. THOMAS  
 DRAWN BY: J. THOMAS  
 CHECKED BY: J. THOMAS  
 APPROVED BY: J. THOMAS

DATE: 11-18-08  
 SIZE: A1  
 SHEET: 1 OF 1

DESCRIPTION: CONNECTOR ASSEMBLY, REAR RELEASE TOAS PLUG

REVISED TO: CUSTOMER DRAWING