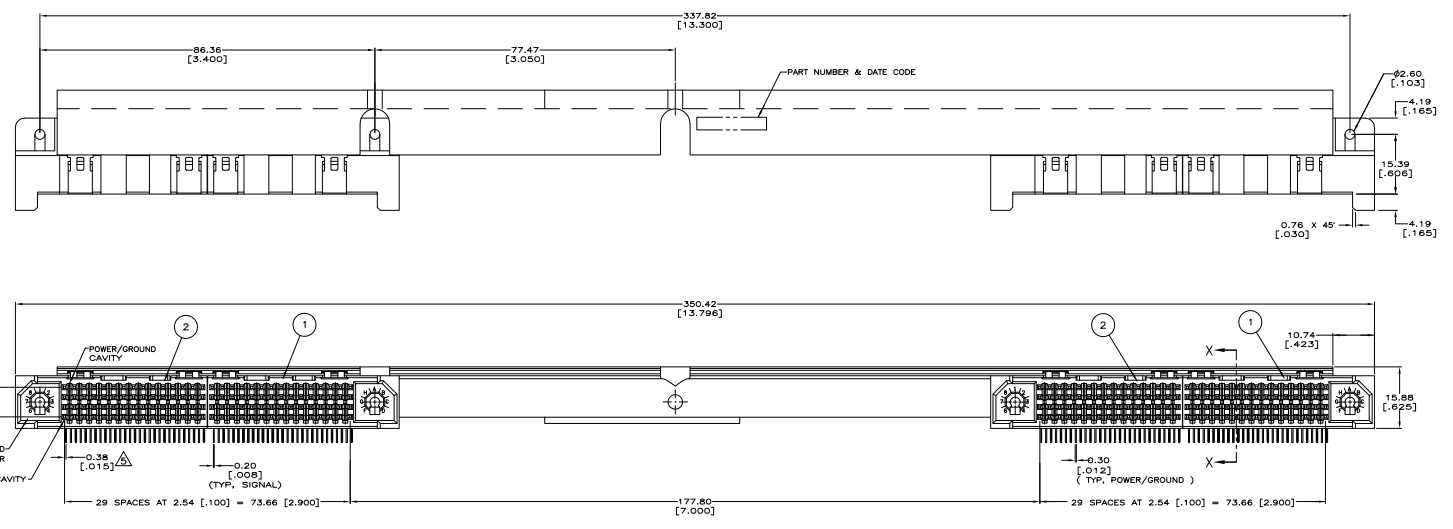
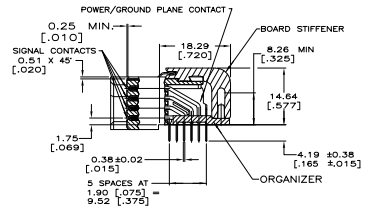


THIS DRAWING IS UNCLASSIFIED
 RELEASED FOR PUBLICATION
 BY THE ELECTRONICS CORPORATION ALL RIGHTS RESERVED

REV	DATE	DESCRIPTION	BY	CHK	APP
AD 47					
0		RELEASE PER EC 0512-0311-04			



- △ HOUSING MATERIAL: LIQUID CRYSTAL POLYMER, COLOR: BLACK.
- △ CONTACT MATERIAL: PHOSPHOR BRONZE, UNS NUMBER 51100, PER ASTM B 103.
- △ CONTACT FINISH:
 ON MATING SURFACES—
 FLASH GOLD OVER
 0.00076[.000030] MIN. PALLADIUM-NICKEL OVER
 0.00127[.000050] MIN. NICKEL.
 ON LEADS—
 0.00254[.000100] MIN. MATTE TIN OVER
 0.00127[.000050] MIN. NICKEL.
- △ STIFFENER MATERIAL: ALUMINUM, ALLOY 6063, PER ASTM B 221.
- △ STIFFENER FINISH: TRIVALENT CONVERSION COATING.
- △ RECEPTACLE ASSEMBLY SOLDER LEADS ARE OFFSET .015 TOWARD THE LETTER KEY SOCKET END OF THE CAVITY CENTERLINE. THE PIN ASSEMBLY SOLDER LEADS ARE IN LINE WITH THE CAVITY CENTERLINE.
- △ RECOMMENDED THREADED FASTENERS: MOUNTING LUG— #2 TRUSS HEAD MACHINE SCREW, TYPE I THRU II, FOR .175 MAX THICK MOUNTING LUG PER ANSI B18.6.3. STIFFENER— #2 PAN HEAD THREAD FORMING SCREW, TYPE AB OR BP, PER ANSI B18.6.4.



QUANTITY	DESCRIPTION	ITEM NO
2	SIGNAL MODULE, 60 POSITION (LEFT END)	2
2	SIGNAL MODULE, 60 POSITION (RIGHT END)	1

5646258-1
 PART NUMBER

THIS DRAWING IS A CONTROLLED DOCUMENT.

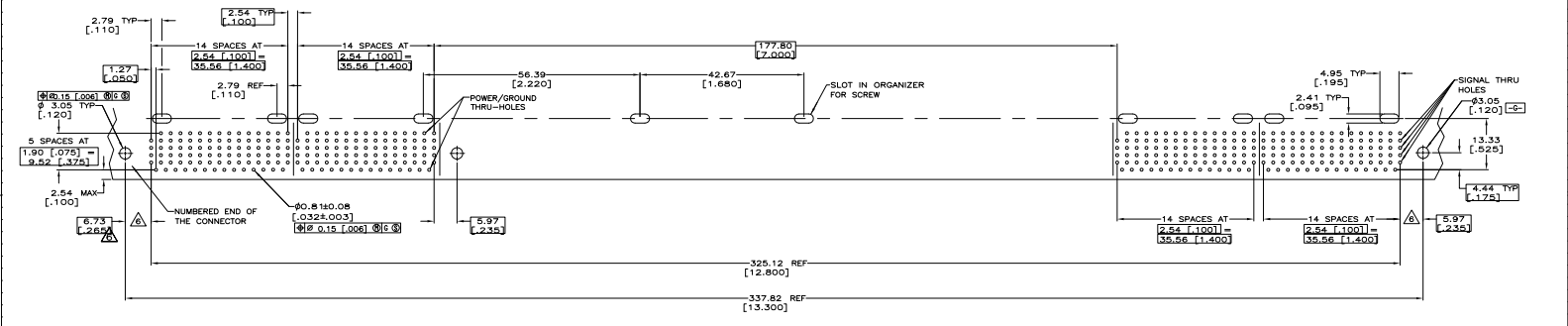
DESIGNED BY: J. G. GRIFFITH	DESIGNED BY: J. G. GRIFFITH	DATE: 108-1244	REV: 1
CHECKED BY: J. G. GRIFFITH	CHECKED BY: J. G. GRIFFITH	REV: 1	DATE: 114-1065
CUSTOMER DRAWING		DATE: 100779	REV: 1

2-PACK Stripline 100
 MODULAR RECEPTACLE ASSEMBLY
 4.19 [165] LEAD LENGTH

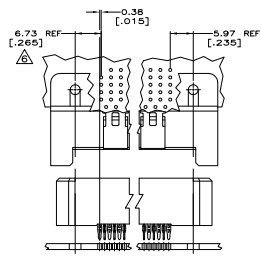
5646258

THIS DRAWING IS UNPUBLISHED. RELEASED FOR PUBLICATION BY THE ELECTRONICS CORPORATION. ALL RIGHTS RESERVED.

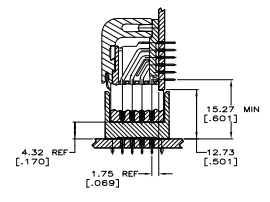
REV	DATE	DESCRIPTION	BY	CHK	APP
AD 47					



RECOMMENDED CIRCUIT PATTERN



REFERENCE - THRU HOLE OFFSET SCALE 2:1



MATED CROSS SECTION SCALE 2:1

THIS DRAWING IS A CONTROLLED DOCUMENT.		DR. POLICHONE	SWRST	Extron	Two Electronics Corporation
DRAWING NO. 108-1244		DR. GREIFTH	SWRST	Extron	Harrisburg, Pa 17102-3608
DATE: 11-14-1065	REV: 1	DR. GREIFTH	SWRST	2-PACK Stripline 100	
PROJECT: 114-1065	REV: 1	DR. GREIFTH	SWRST	MODULAR RESEPIHOLE ASSEMBLY	
REV: 1	REV: 1	DR. GREIFTH	SWRST	4.19 [165] LEAD LENGTH	
CUSTOMER DRAWING	REV: 2:1	DR. GREIFTH	SWRST	100779	G=5646258

AMP 400 REF 2/10/65