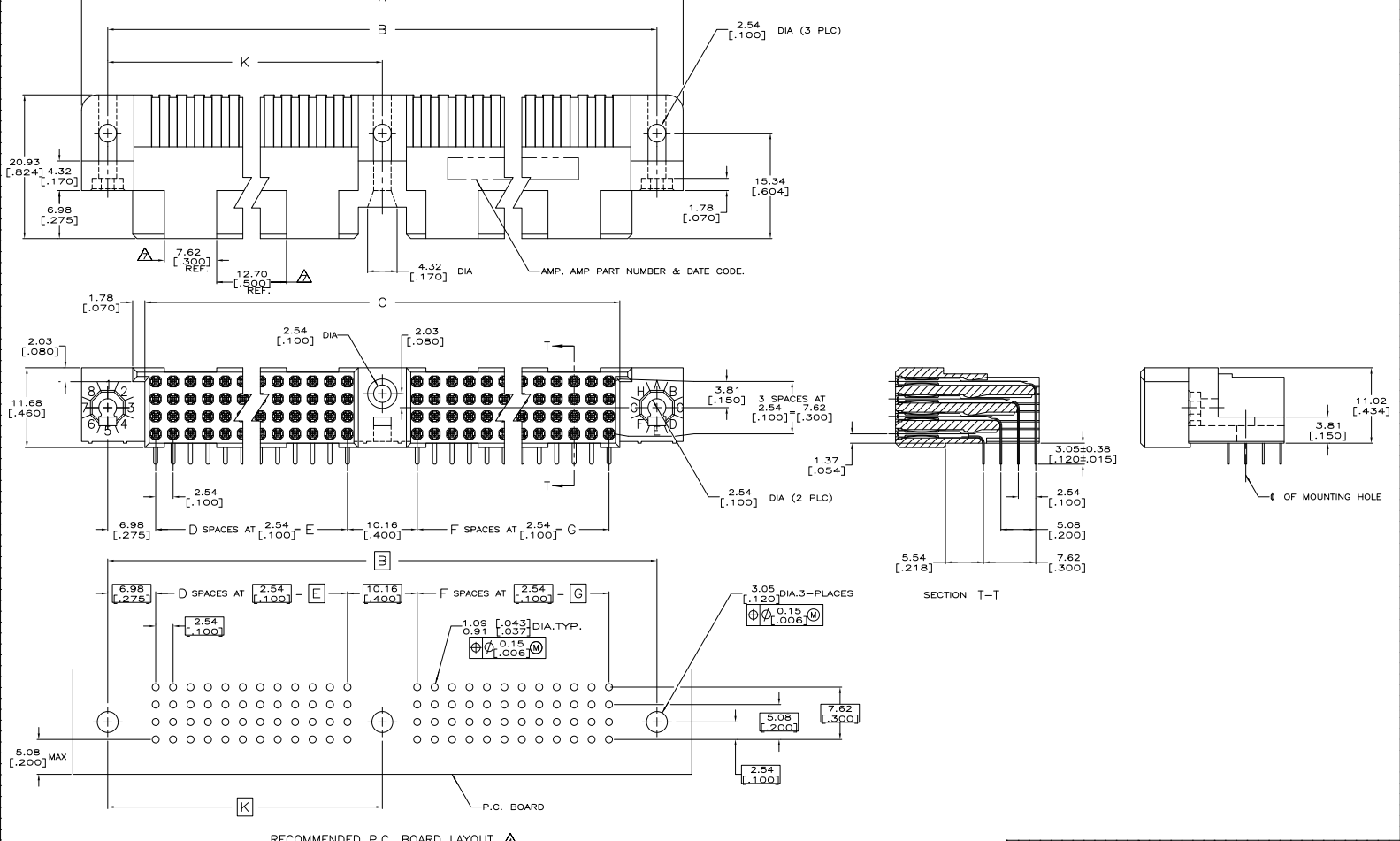


THIS DRAWING IS UNPUBLISHED. ALL RIGHTS RESERVED.  
 © 2008 TYS ELECTRONICS CORPORATION

REV	DATE	DESCRIPTION	BY	CHK
AD 25				
K		REVISED PER EC 0513-0387-05	100EC05	JDF/AMS
K1		REVISED PER ECO-09-021510	12SEP09	KK/AEG



DIMENSIONS		UNLESS SPECIFIED		TYP.		TYS ELECTRONICS CORPORATION	
INCHES	MILLIMETERS	FRONT VIEW	TOP VIEW	DATE	DESCRIPTION	REV.	BY
1/16	1.5748	4/13/08	4/13/08	10/10/08	HDI, 4 ROW, RECEPTACLE ASSEMBLY,		
1/32	3.175				1 GUIDE PIN, 3 MOUNTING HOLES, 3.05(120)		
1/64	6.35				LONG SOLDER TAILS, 0.0007(0.00000) GOLD PLATE		
1/32	3.175						
1/16	1.5748						
1/8	3.175						
1/4	6.35						
1/2	12.7						
3/4	19.05						
1	25.4						
1 1/4	31.75						
1 1/2	38.1						
1 3/4	44.45						
2	50.8						
2 1/4	63.5						
2 1/2	63.5						
2 3/4	69.85						
3	76.2						
3 1/4	88.9						
3 1/2	88.9						
3 3/4	95.25						
4	101.6						
4 1/4	114.3						
4 1/2	114.3						
4 3/4	120.65						
5	127						
5 1/4	140.15						
5 1/2	140.15						
5 3/4	146.45						
6	152.4						
6 1/4	165.1						
6 1/2	165.1						
6 3/4	171.45						
7	177.8						
7 1/4	190.5						
7 1/2	190.5						
7 3/4	196.85						
8	203.2						
8 1/4	215.9						
8 1/2	215.9						
8 3/4	222.25						
9	228.6						
9 1/4	241.3						
9 1/2	241.3						
9 3/4	247.65						
10	254						
10 1/4	266.7						
10 1/2	266.7						
10 3/4	273.05						
11	279.4						
11 1/4	292.1						
11 1/2	292.1						
11 3/4	298.45						
12	304.8						
12 1/4	317.5						
12 1/2	317.5						
12 3/4	323.85						
13	330.2						
13 1/4	342.9						
13 1/2	342.9						
13 3/4	349.25						
14	355.6						
14 1/4	368.3						
14 1/2	368.3						
14 3/4	374.65						
15	381						
15 1/4	393.7						
15 1/2	393.7						
15 3/4	399.95						
16	406.4						
16 1/4	419.1						
16 1/2	419.1						
16 3/4	425.45						
17	431.8						
17 1/4	444.5						
17 1/2	444.5						
17 3/4	450.85						
18	457.2						
18 1/4	469.9						
18 1/2	469.9						
18 3/4	476.25						
19	482.6						
19 1/4	495.3						
19 1/2	495.3						
19 3/4	501.65						
20	508						
20 1/4	520.7						
20 1/2	520.7						
20 3/4	527.05						
21	533.4						
21 1/4	546.1						
21 1/2	546.1						
21 3/4	552.45						
22	558.8						
22 1/4	571.5						
22 1/2	571.5						
22 3/4	577.85						
23	584.2						
23 1/4	596.9						
23 1/2	596.9						
23 3/4	603.25						
24	609.6						
24 1/4	622.3						
24 1/2	622.3						
24 3/4	628.65						
25	635						

THIS DRAWING IS UNPUBLISHED  
 UNLESS OTHERWISE SPECIFIED  
 ALL RIGHTS RESERVED

REV	DATE	DESCRIPTION	BY	CHKD	APP'D
AD 25		SEE SHEET 1			

- △ HOUSING MATERIAL: THERMOPLASTIC, COLOR-NATURAL.
- △ CONTACT MATERIAL: COPPER ALLOY.
- △ CONTACT FINISH: .00127-.00254 [.000050-.000100] NICKEL UNDERPLATE ALL OVER; .00076 [.000035] GOLD PLATE IN CONTACT AREA, TIN-LEAD PLATED SOLDER TAILS.
- △ SOLDER TAILS MUST FIT HOLE PATTERN AS SHOWN ON THE RECOMMENDED P.C. BOARD LAYOUT.
- 5. DIMENSIONS IN BRACKETS ARE IN INCHES.
- △ PART NUMBER IS OBSOLETE.
- △ QUANTITIES OF VOID CORING ARE DEPENDENT ON THE POSITION SIZE OF THE HOUSING.
- △ OBSOLETE PARTS: OBSOLETE CIS STREAMLINING PER D.RENAUD/D.SINISI

REV	DATE	DESCRIPTION	BY	CHKD	APP'D	PART NUMBER
						9-533443-5
△		OBSOLETE				<del>633443-8</del>
						533443-7
						533443-6
						533443-5
						533443-4
						533443-3
						533443-2
						320

THIS DRAWING IS A CONTROLLED DOCUMENT.	DATE REVISION	BY	CHKD	APP'D
INCHES (DIMENSIONS)	UNLESS OTHERWISE SPECIFIED	Trio Electronics Corporation Harrisburg, PA 17105-3608		
FRONT VIEW	1	HDI, 4 ROW, RECEPTACLE ASSEMBLY, 1 GUIDE PIN, 3 MOUNTING HOLES, 0.050[.125] LONG SOLDER TAILS, 0.00076[.000035] GOLD PLATE		
DATE SIZE DRAWING NO	REV	BY	CHKD	APP'D
CUSTOMER DRAWING		DATE	BY	CHKD
		4.1	2	K1