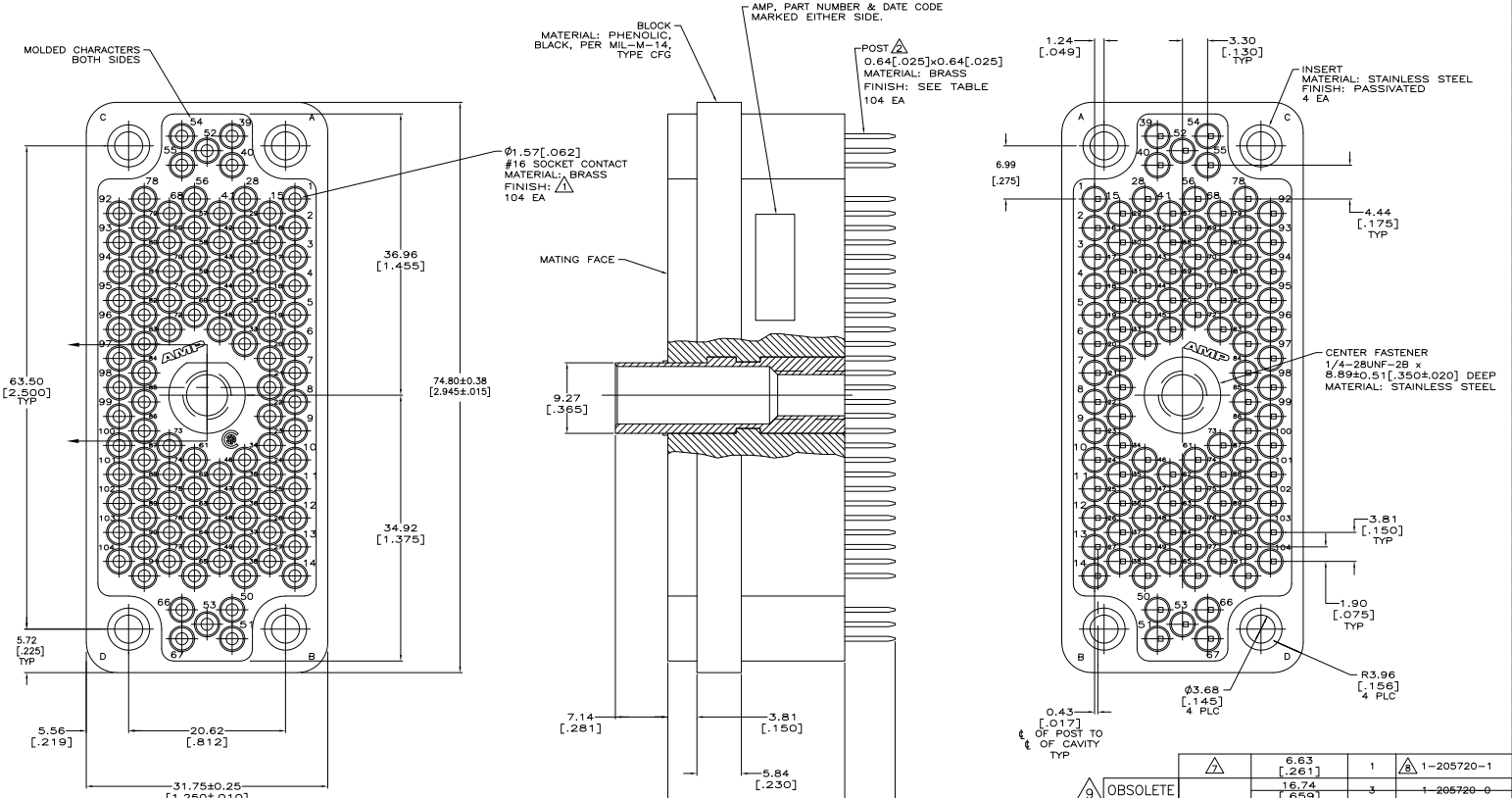


THIS DRAWING IS UNPUBLISHED. ALL RIGHTS RESERVED.  
 © 2008 TTI ELECTRONICS CORPORATION

REV	DATE	DESCRIPTION	BY	APP
Z	REVISED PER ECO-08-01835		ZIMMERS	HMR CS
Z1	REVISED PER ECO-09-02025		OBENFOL	RK AEG



- Δ 0.76um[.000030] MIN GOLD, INTERNALLY, FOR A LENGTH OF 5.08[.200] FROM MATING END WITH GOLD FLASH ON REMAINDER, ALL OVER 0.76um[.000030] MIN NICKEL.
- △ POSTS ARE SEMI-AUTOMATICALLY WIREABLE AND WILL ACCOMMODATE (SEE TABLE) TERMINATIONS.
- 3 #24 AWG MAX WIRE TO BE USED WITH THIS CONNECTOR.
- 4 FOR PANEL CUTOUT SEE AMP CUSTOMER DWG 201692.
- △ 2.54um[.000100] MIN TIN-LEAD OVER 1.27um[.000050] MIN NICKEL.
- △ 2.54um[.000100] MIN TIN OVER 1.27um[.000050] MIN NICKEL.
- △ GOLD FLASH OVER .000050 MIN NICKEL.
- △ PRELIMINARY NOT FOR PRODUCTION.
- △ OBSOLETE PARTS: OBSOLETE CIS STREAMLINING PER D.RENAUD/D.SINISI

POST FINISH	NO OF TERM	PART NUMBER
△	1	1-205720-1
△	3	1-205726-0
△	1	205720-9
△	3	205720-2
△	1	205720-1

THIS DRAWING IS A CONTROLLED DOCUMENT. IF REPRODUCED, IT IS VOID. TTI ELECTRONICS CORPORATION, HARRISBURG, PA 17105-3808

INCHES	REFLECTED	DATE	BY
MILLIMETERS	REFLECTED	DATE	BY
DATE	DATE	DATE	DATE
DATE	DATE	DATE	DATE
DATE	DATE	DATE	DATE

CUSTOMER DRAWING: A100779 (205720) DATE: 4.1 SHEET: 1 OF 1 REV: Z1