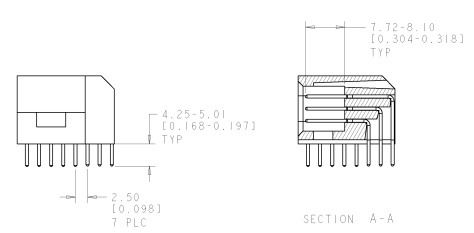
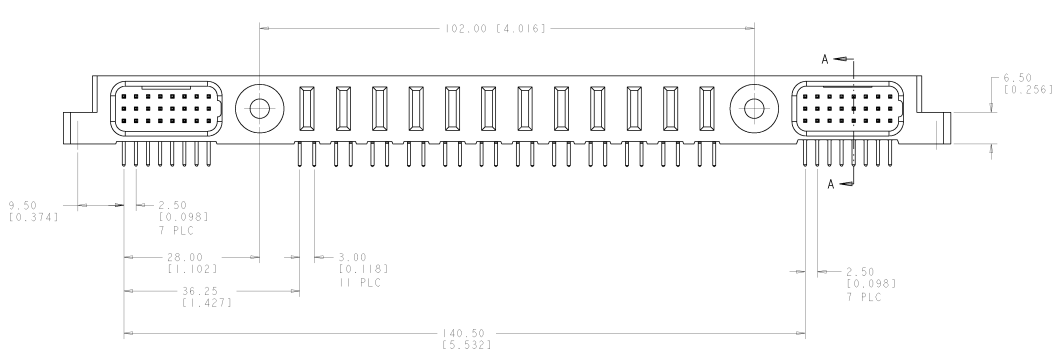
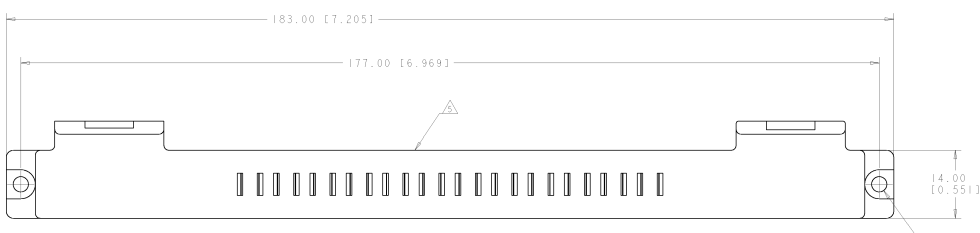


8	7	6	5	4	3	2	1
DATE CHANGE TO SUBSTITUTION	REVISIONS FOR IDENTIFICATION						
(X) CONFIRMED	BY TECH ELECTRONICS CORPORATION, ALL RIGHTS RESERVED						

REV	DATE	DESCRIPTION	BY	CHK	APP
00					
1		RELEASED	14/08/08	RS	PD

- PART NUMBER CHANGES AND/OR DESIGN CHANGES AFFECTING ITEM INTERCHANGEABILITY REQUIRE PRIOR TYCO APPROVAL AND AUTHORIZATION BY REVISION TO THIS DRAWING.
  - MATERIAL:  
 INSULATORS - THERMOPLASTIC, GLASS REINFORCED, COLOR: BLACK, UL94V-0 FLAMMABILITY RATED.  
 POWER CONTACTS - PHOSPHOR BRONZE ALLOY.  
 COPPER ALLOY.  
 SOLDER SIGNAL PINS-BRASS ALLOY.  
 CROWN BAND-BERYLLIUM COPPER ALLOY
  - FINISH:  
 CONTACTS - GOLD PLATE .000030 INCH MIN. THK., OVER NICKEL .000050 INCH MIN. THK.  
 SOLDER TAILS, TIN .000100 INCH MIN. THK. OVER NICKEL .000040 MIN THK.
- ▲ MOUNTING FLANGES ACCEPT M3 OR #4-40 SCREWS, (USER SUPPLIED)  
 ▲ ITEMS PROVIDED TO THIS SPECIFICATION TO BE PERMANENTLY IDENTIFIED PER THE FOLLOWING IDENTIFIER LABEL
- TYCO PART NO. XXXXXXXX-X      DATE CODE (e.g., 0106) YEAR 1 WEEK 1

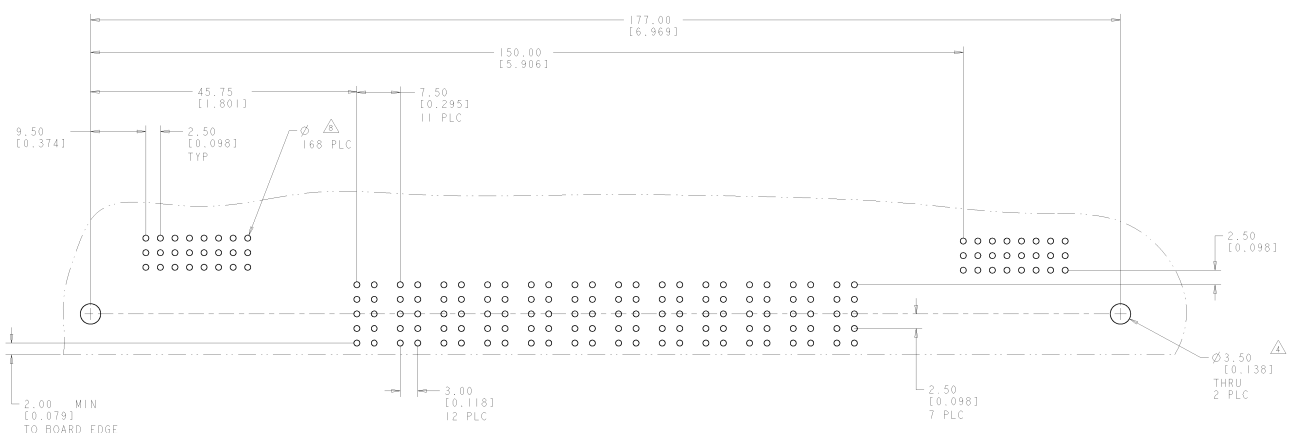


**ELCON FLATPAQ**

AS SHOWN		6646727-1																																	
DESCRIPTION		PART NUMBER																																	
<table border="1"> <tr> <td>STANDARD</td> <td>TYCO ELECTRONICS</td> <td>TEMPERATURE</td> <td></td> </tr> <tr> <td>INCHES</td> <td>TYCO ELECTRONICS</td> <td>TEMPERATURE</td> <td></td> </tr> <tr> <td>MILLIMETERS</td> <td>TYCO ELECTRONICS</td> <td>TEMPERATURE</td> <td></td> </tr> </table>	STANDARD	TYCO ELECTRONICS	TEMPERATURE		INCHES	TYCO ELECTRONICS	TEMPERATURE		MILLIMETERS	TYCO ELECTRONICS	TEMPERATURE		<table border="1"> <tr> <td>TYCO</td> <td>TYCO ELECTRONICS</td> </tr> <tr> <td>6646727-1</td> <td>6646727-1</td> </tr> </table>	TYCO	TYCO ELECTRONICS	6646727-1	6646727-1	<table border="1"> <tr> <td>DESCRIPTION</td> <td>PIN CONNECTOR, RIGHT ANGLE, SOLDER TAILS</td> </tr> <tr> <td>QUANTITY</td> <td></td> </tr> <tr> <td>DATE</td> <td></td> </tr> <tr> <td>REVISION</td> <td></td> </tr> </table>	DESCRIPTION	PIN CONNECTOR, RIGHT ANGLE, SOLDER TAILS	QUANTITY		DATE		REVISION		<table border="1"> <tr> <td>DATE</td> <td>14/08/08</td> <td>BY</td> <td>RS</td> </tr> <tr> <td>DATE</td> <td>14/08/08</td> <td>BY</td> <td>RS</td> </tr> </table>	DATE	14/08/08	BY	RS	DATE	14/08/08	BY	RS
STANDARD	TYCO ELECTRONICS	TEMPERATURE																																	
INCHES	TYCO ELECTRONICS	TEMPERATURE																																	
MILLIMETERS	TYCO ELECTRONICS	TEMPERATURE																																	
TYCO	TYCO ELECTRONICS																																		
6646727-1	6646727-1																																		
DESCRIPTION	PIN CONNECTOR, RIGHT ANGLE, SOLDER TAILS																																		
QUANTITY																																			
DATE																																			
REVISION																																			
DATE	14/08/08	BY	RS																																
DATE	14/08/08	BY	RS																																
MATERIAL		CUSTOMER DRAWING																																	

REV	DATE	DESCRIPTION	BY	CHK	APP
00		SEE SHEET 1			

CONNECTOR	EQUIVALENT CATALOG MODULE #	SIZE NO.	CONTACT QTY	MATING PIN	MAX. CURRENT (PER CONTACT)	CONTACT SPACING	VOLTAGE RATING
PIN	DEDICATED HOUSING	POWER	8	12	1.25 X 7.00 [.049 X .276]	7.50 [1.2953]	250 VOLTS
		SIGNAL	22	48	.64 [1.025] SO.	2.50 [1.0984]	125 VOLTS
		LEFT MOUNTING FLANGE					
		RIGHT MOUNTING FLANGE					



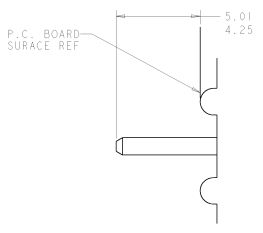
PRINTED CIRCUIT LAYOUT  
 COMPONENT SIDE

ELCON FLATPAQ

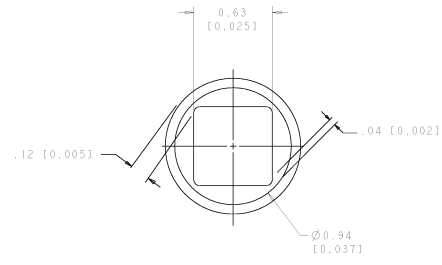
STANDARD: ... DIMENSIONS: ... FINISH: ... MATERIAL: ...		TYPICAL: ... FINISHES: ... FINISHES: ... FINISHES: ... FINISHES: ...		<b>tyco</b> Tyco Electronics Harrisburg, PA 17105-0008 <b>Electronics</b> PIN CONNECTOR, RIGHT ANGLE, SOLDER TAILS A 00779 (2)-664672 CUSTOMER DRAWING	
--	--	--	--	---	--

DATE MANUFACTURE TO ORDER DATE  
 02 CONFIDENTIAL BY TOSH ELECTRONICS CORPORATION TEL: 011-91-88501

REV. NO.		REVISIONS		
REV.	NO.	DESCRIPTION	DATE	BY
00	00	SEE SHEET 1		



7. SOLDER PIN DETAIL  
 SCALE 10 : 1



△ SOLDER TERMINATION AREA  
 SCALE 40:1  
 RECOMMENDED PRINTED CIRCUIT SOLDER HOLE  
 FINISHED HOLE:  $\phi 1.02 [0.040] \pm .008 [0.0003]$   
 DRILLED HOLE:  $\phi 1.15 [0.0453] \pm .013 [0.0005]$   
 COPPER PLATE:  $.025 [0.0010]$  MIN.  
 TIN PLATE:  $.008 [0.0003]$  MIN. (PER SURFACE)

ELCON FLATPAQ

10. PRINTED CIRCUIT BOARD FABRICATOR 11. MANUFACTURE TO ORDER 12. CONFIDENTIAL	13. MANUFACTURE TO ORDER 14. CONFIDENTIAL	15. MANUFACTURE TO ORDER 16. CONFIDENTIAL	17. MANUFACTURE TO ORDER 18. CONFIDENTIAL	19. MANUFACTURE TO ORDER 20. CONFIDENTIAL	21. MANUFACTURE TO ORDER 22. CONFIDENTIAL	23. MANUFACTURE TO ORDER 24. CONFIDENTIAL	<b>Tyco</b> Tyco Electronics Harrisburg, PA 17105-0008 <b>Elconics</b> <b>Elconics</b> PIN CONNECTOR, RIGHT ANGLE, SOLDER TAILS PART   CAGE CODE   DRAWING NO   DESCRIPTION A   00779   C-664672   CUSTOMER DRAWING
--	--	--	--	--	--	--	--