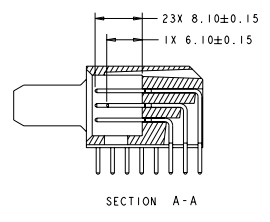
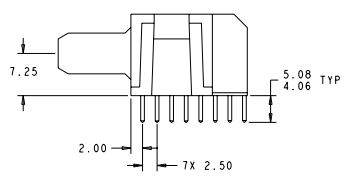
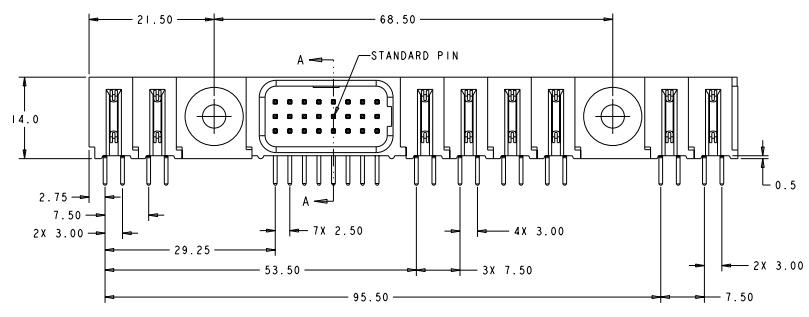
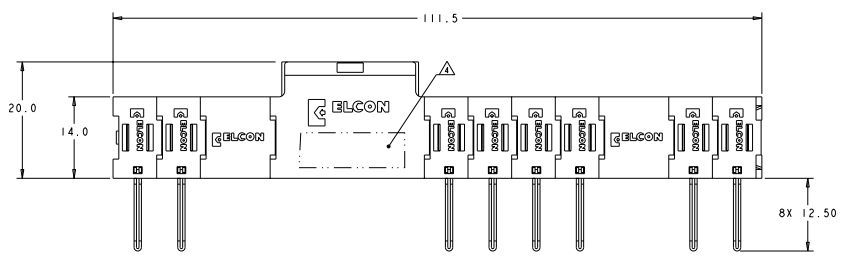


REV. NO.		REVISIONS	
DATE	BY	DESCRIPTION	DATE
D	REV PER ECO-08-032052		



1. PART NUMBER CHANGES AND OR DESIGN CHANGES AFFECTING ITEM INTERCHANGEABILITY REQUIRE PRIOR TYCO ELECTRONICS APPROVAL AND AUTHORIZATION BY REVISION TO THIS DRAWING.

△ MATERIAL: INSULATORS - THERMOPLASTIC, GLASS REINFORCED, COLOR - BLACK, UL94V-0 FLAMMABILITY RATED.
 POWER CONTACTS - PHOSPHOR BRONZE ALLOY, COPPER ALLOY
 SOLDER SIGNAL PINS-BRASS ALLOY

△ FINISH: CONTACTS - GOLD PLATE 0.76µm MIN. THK., OVER NICKEL 1.27µm MIN. THK.
 SOLDER TAILS; TIN 3.05µm MIN. THK. OVER NICKEL 1.27µm MIN THK.

△ ITEMS PROVIDED TO THIS SPECIFICATION TO BE PERMANENTLY IDENTIFIED PER THE FOLLOWING IDENTIFIER LABEL

YEAR WEEK
 TYCO ELECTRONICS P/N DATE CODE (e.g. 0T06)
 XXXXXX-X XXXX

5. THIS CONNECTOR MATES WITH SOCKET CONNECTOR P/N 6646365-1

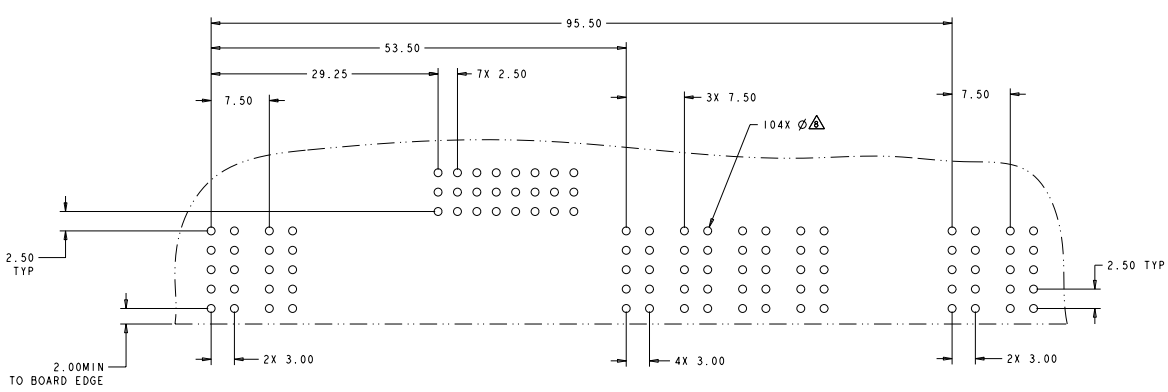
△ CUSTOM FP302 MODULE WITH ONE STANDARD PIN

ELCON FLATPAQ

AS SHOWN	6651848-1
DESCRIPTION	PART NUMBER

DATE: 06/01/08	DESIGNED BY: 06JANES	DATE: 06/01/08	DESIGNED BY: 06JANES
APPROVED BY: 06JANES	DATE: 06/01/08	APPROVED BY: 06JANES	DATE: 06/01/08
MATERIAL: THERMOPLASTIC, GLASS REINFORCED, BLACK, UL94V-0		MATERIAL: PHOSPHOR BRONZE ALLOY, COPPER ALLOY	
FINISH: GOLD PLATE 0.76µm MIN. THK., OVER NICKEL 1.27µm MIN. THK.		FINISH: TIN 3.05µm MIN. THK. OVER NICKEL 1.27µm MIN THK.	
PART NUMBER: 6651848		PART NUMBER: 6651848	
CUSTOMER DRAWING		CUSTOMER DRAWING	

REV. NO.		REVISIONS	
NO.	DATE	DESCRIPTION	BY
00		SEE SHEET 1	



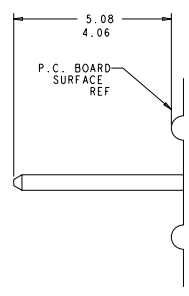
PRINTED CIRCUIT LAYOUT
 COMPONENT SIDE

CONNECTOR	EQUIVALENT CATALOG MODULE #	MODULE QTY	CONTACT QTY	SIZE NO.	MATING PIN	MAX. CURRENT (PER CONTACT)	CONTACT SPACING	VOLTAGE RATING
PIN	FP152	8	8	8	1.25 X 7.00	35 amps	7.50	250 VOLTS
	FP302	1	24	22	.64 SO.	3 amps	2.50	125 VOLTS
	FP506	1	-	-	RIGHT ANGLE GUIDE SOCKET			

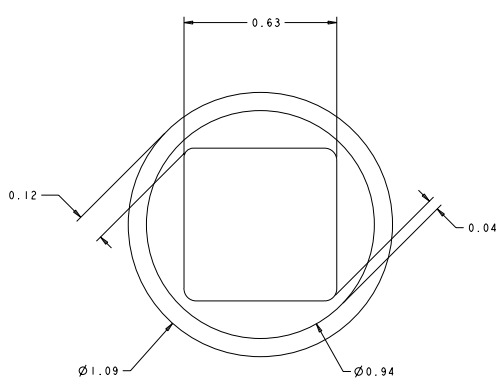
ELCON FLATPAQ

DATE: 08/15/2018 10:58:12 AM
 DRAWN BY: P. J. ELECTRONICS CORPORATION
 CHECKED BY: P. J. ELECTRONICS CORPORATION
 APPROVED BY: P. J. ELECTRONICS CORPORATION
 TITLE: CUSTOMER DRAWING
 PART NO.: 00779 ©-6651848
 SHEET: 3 OF 3
 DATE: 08/15/2018
 DRAWN BY: P. J. ELECTRONICS CORPORATION
 CHECKED BY: P. J. ELECTRONICS CORPORATION
 APPROVED BY: P. J. ELECTRONICS CORPORATION
 TITLE: CUSTOMER DRAWING
 PART NO.: 00779 ©-6651848
 SHEET: 3 OF 3
 DATE: 08/15/2018

REVISED		REVISIONS			
NO.	DATE	BY	DESCRIPTION	DATE	BY
GP	00		SEE SHEET 1		



7. SOLDER PIN DETAIL
SCALE 10:1



⚠ SOLDER TERMINATION AREA
 SCALE 40:1
 RECOMMENDED PRINTED CIRCUIT SOLDER HOLE
 FINISHED HOLE: Ø1.02 ±.08
 DRILLED HOLE: Ø1.15 ±.013
 COPPER PLATE: .025 MIN.
 TIN PLATE: .008 MIN. (PER SURFACE)

ELCON FLATPAQ

DATE: 08/27/93 DRAWN BY: J. J. FISCHER CHECKED BY: J. J. FISCHER APPROVED BY: J. J. FISCHER		DATE: 08/27/93 DRAWN BY: J. J. FISCHER CHECKED BY: J. J. FISCHER APPROVED BY: J. J. FISCHER		DATE: 08/27/93 DRAWN BY: J. J. FISCHER CHECKED BY: J. J. FISCHER APPROVED BY: J. J. FISCHER	
TITLE: PIN CONNECTOR, RIGHT ANGLE SOLDER TAILS FLATPAQ		STATE: PA COUNTY: BERKSHIRE CITY: WARRINGER, PA 17145-3608		PART NO: 00779 REV: 3 SHEET: 3 OF 3	