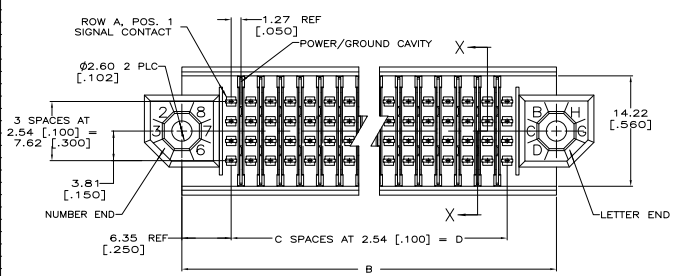
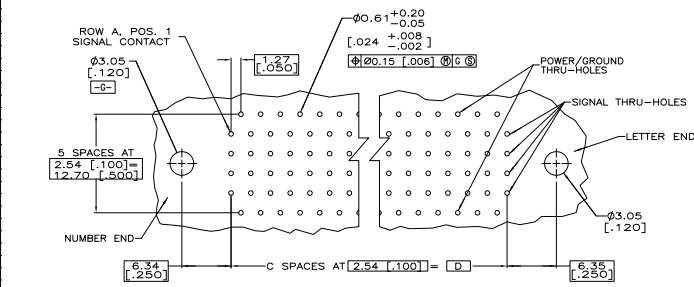
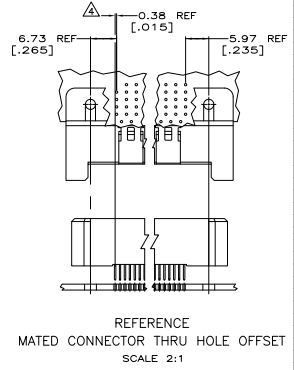
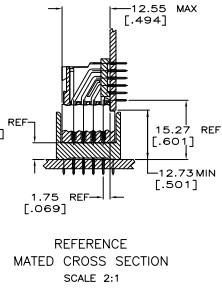
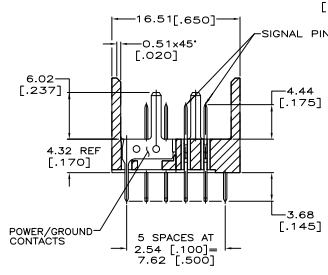
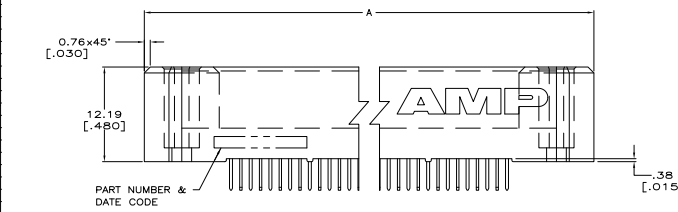


THIS DRAWING IS UNPUBLISHED. ALL RIGHTS RESERVED.
 © 2005 BY TYS ELECTRONICS CORPORATION

REV	DATE	DESCRIPTION	BY	CHK	APP
AD	00				
A		REV PER EC 0512-0208-05	205EP10	BC	GG
AT		REVISED PER EC0-10-000444	0300099	KK	AEG



- △ HOUSING AND ORGANIZER MATERIAL: LIQUID CRYSTAL POLYMER, COLOR, BLACK
- △ SIGNAL AND GROUND PLANE CONTACT MATERIAL: PHOSPHOR BRONZE
- △ CONTACT FINISH: 0.00127 (.000050) MIN. NICKEL UNDERPLATE PER SAE-AMS-QQ-N-290, GOLD FLASH PER ASTM B 488 OVER 0.00076 (.000030) MIN. PALLADIUM-NICKEL ON CONTACT AREA, 0.0038 (.000150) MIN MATTE TIN PER ASTM B 545 ON CONTACT TAILS.
- △ RECEPTACLE ASSEMBLY SOLDER LEADS ARE OFFSET .015 TOWARD THE LETTER END OF THE CAVITY CENTERLINE. THE PIN ASSEMBLY SOLDER LEADS ARE IN LINE WITH THE CAVITY CENTERLINE.
- △ OBSOLETE PART NUMBER.
- △ OBSOLETE PARTS: OBSOLETE CIS STREAMLINING PER D.RENAUD/D.SINISI



SECTION X-X
 ROTATED 90° CW

RECOMMENDED CURCUT PATTERN
 PER ANSI/IPC-D-300 TYPE II, CLASS C
 (COMPONENT SIDE)

△ OBSOLETE	175.26 [6.900]	69	187.96 [7.400]	197.61 [7.780]	280	-5646246-7
△	149.86 [5.900]	59	162.56 [6.400]	172.21 [6.780]	240	5646245-6
△	137.16 [5.400]	54	149.86 [5.900]	159.51 [6.280]	220	5646245-5
△	111.76 [4.400]	44	124.46 [4.900]	134.11 [5.280]	180	5646245-4
△	86.36 [3.400]	34	99.06 [3.900]	108.71 [4.280]	140	5646245-3
△ OBSOLETE	60.96 [2.400]	24	73.66 [2.900]	83.31 [3.280]	100	-5646246-2

THIS DRAWING IS A CONTROLLED DOCUMENT.		DESIGNER	DATE	REVISED	DATE	BY	CHK	APP
INCHES	(= MM)							
REV	DATE	BY	CHK	APP	DATE	BY	CHK	APP
1					100-1244			
CUSTOMER DRAWING		TBD		A1 00779		G=5646245		REVISED TO