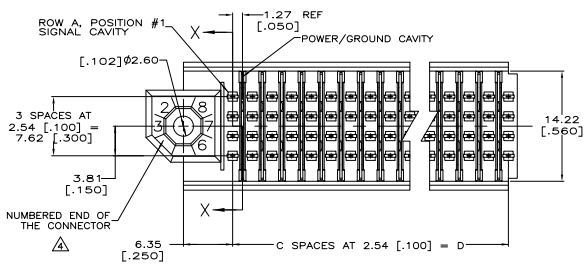
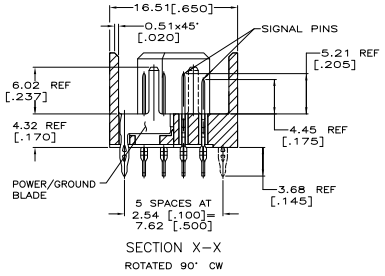
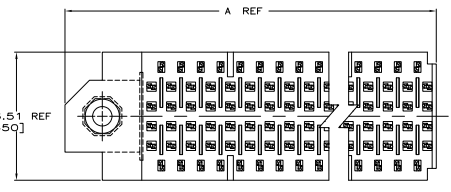
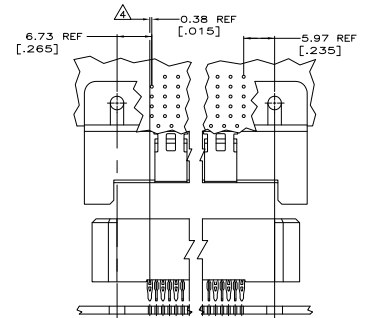
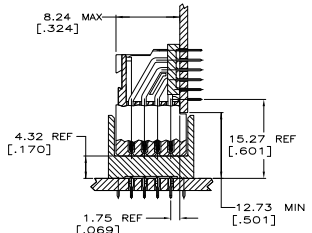
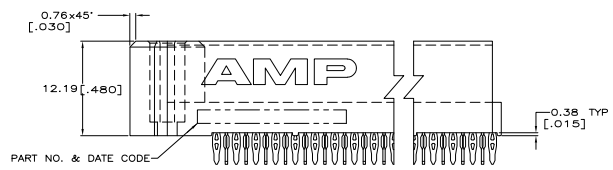


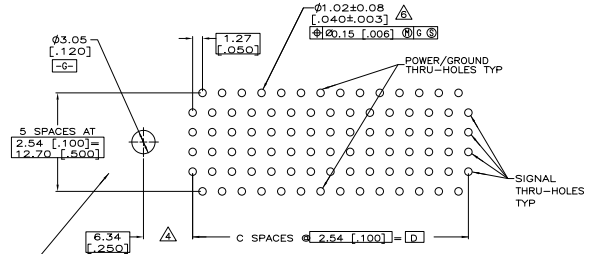
REV	DATE	DESCRIPTION	BY	CHK	APP
AD	00				
O		RELEASE PER EC 0512-0311-04	28ALUS	JDF	SSG



- △ HOUSING AND ORGANIZER MATERIAL: LIQUID CRYSTAL POLYMER, COLOR, BLACK
- △ SIGNAL AND GROUND PLANE CONTACT MATERIAL: PHOSPHOR BRONZE
- △ CONTACT FINISH: 0.00127[.000050] MIN. NICKEL UNDERPLATE, GOLD FLASH OVER 0.00076[.000030] MIN. PALLADIUM-NICKEL ON CONTACT AREA, 0.0005[.000020] MIN MATTE TIN ON ACTION PIN AREA OF CONTACT TAILS.
- △ RECEPTACLE ASSEMBLY LEADS ARE OFFSET .015 TOWARD THE LETTER END OF THE CAVITY CENTERLINE. THE PIN ASSEMBLY LEADS ARE IN LINE WITH THE CAVITY CENTERLINE.

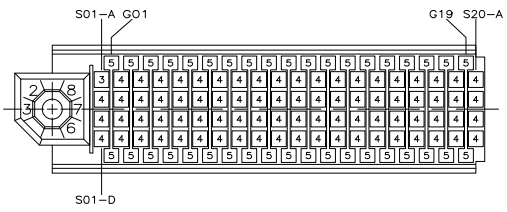


REFERENCE MATED CONNECTOR THRU HOLE OFFSET SCALE 2:1



RECOMMENDED CIRCUIT PATTERN PER ANSI/IPC-D-300 TYPE II, CLASS C (COMPONENT SIDE)

48.28 [1.900]	19	—	60.55 [2.384]	80	5646619-2
D	C	—	A	NO OF SIGNAL PINS	PART NO
THIS DRAWING IS A CONTROLLED DOCUMENT.					
DRAWING NO. 108-1244		REV. 104-1065		TYSO	
DATE 10/1/88		DATE 10/1/88		TYSO	
BY JDF		BY JDF		TYSO	
CHK JDF		CHK JDF		TYSO	
APP JDF		APP JDF		TYSO	
CUST. DRAWING		CUSTOMER DRAWING		CUSTOMER DRAWING	



5646619-2 SUB-ASSEMBLY
(80 POSITIONS)

POWER/GROUND CONTACT
LOAD PATTERN
(MATING FACE)

ITEM DESCRIPTION	LEAD LENGTH REF	POST LENGTH REF	ITEM NUMBER
POWER/GROUND	.145	.237	5
SIGNAL	.145	.205	4
SIGNAL	.145	.175	3

THIS DRAWING IS A CONTROLLED DOCUMENT.		REV. POLYCHROME	SWAS	TYSO TYSO Electronics Corporation Harrisburg, Pa 17105-3608
DRAWING NO. 5646619-2		REV. 00	SWAS	
DATE: 10/1/99	BY: G. GRZYTH	DATE: 10/1/99	BY: G. GRZYTH	DESCRIPTION: 2-PACK Stripline 100-PIN HEADER SUB-ASSEMBLY
REV. 00	DATE: 10/1/99	REV. 00	DATE: 10/1/99	LEFT END MODULE
REV. 00	DATE: 10/1/99	REV. 00	DATE: 10/1/99	3.68 [145] ACTION PIN LEAD LENGTH
REV. 00	DATE: 10/1/99	REV. 00	DATE: 10/1/99	108-1244
REV. 00	DATE: 10/1/99	REV. 00	DATE: 10/1/99	104-1065
REV. 00	DATE: 10/1/99	REV. 00	DATE: 10/1/99	100779
REV. 00	DATE: 10/1/99	REV. 00	DATE: 10/1/99	5646619
REV. 00	DATE: 10/1/99	REV. 00	DATE: 10/1/99	CUSTOMER DRAWING