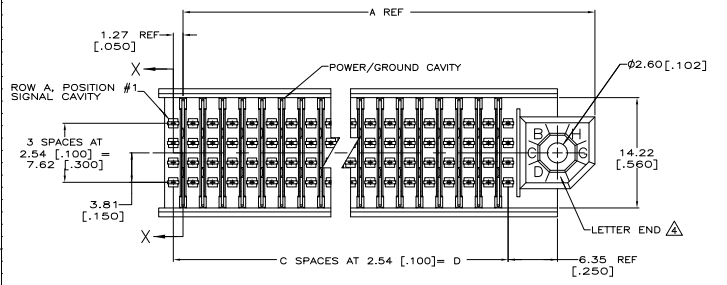
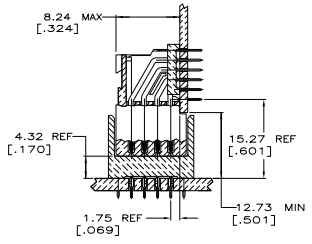
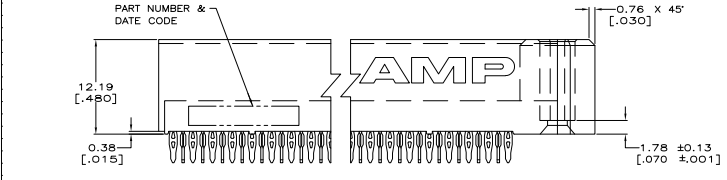


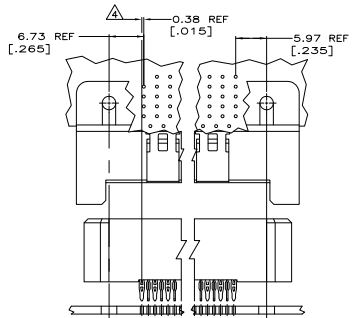
REV	DATE	DESCRIPTION	BY	CHK	APP
AD	00	RELEASED PER EC 0512-0311-G4	284MUS	JDF	SSG



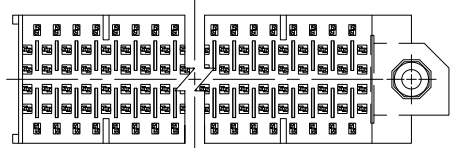
- △ HOUSING AND ORGANIZER MATERIAL: LIQUID CRYSTAL POLYMER, COLOR, BLACK
- △ SIGNAL AND GROUND PLANE CONTACT MATERIAL: PHOSPHOR BRONZE
- △ CONTACT FINISH: 0.00127[.000050] MIN. NICKEL UNDERPLATE, GOLD FLASH OVER 0.00076[.000030] MIN. PALLADIUM-NICKEL ON CONTACT AREA, 0.0005[.000020] MIN MATTE TIN ON ACTION PIN AREA OF CONTACT TAILS.
- △ RECEPTACLE ASSEMBLY LEADS ARE OFFSET .015 TOWARD THE LETTER END OF THE CAVITY CENTERLINE. THE PIN ASSEMBLY LEADS ARE IN LINE WITH THE CAVITY CENTERLINE.



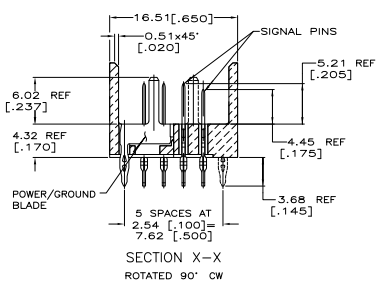
REFERENCE MATED CROSS SECTION SCALE 2:1



REFERENCE MATED CONNECTOR THRU HOLE OFFSET SCALE 2:1



RECOMMENDED CIRCUIT PATTERN PER ANSI/IPC-D-300 TYPE II, CLASS C (COMPONENT SIDE)



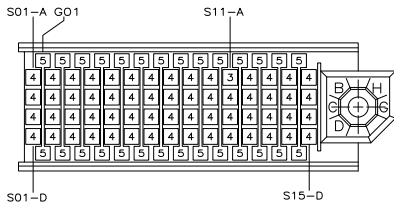
SECTION X-X ROTATED 90° CW

48.28 [1.900]	19	-	60.55 [2.384]	80	5646617-2
35.56 [1.400]	14	-	47.85 [1.884]	60	5646617-1
	C	-	A	NO OF SIGNAL PINS	PART NO

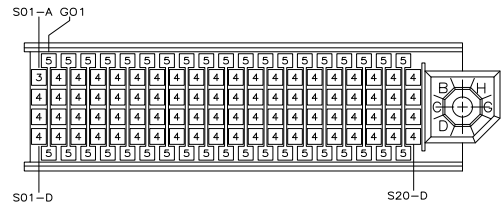
THIS DRAWING IS A CONTROLLED DOCUMENT.

DATE	10/10/00	BY	W. GRIFFITH	CHKD	W. GRIFFITH
REV	1	DATE	10/10/00	BY	W. GRIFFITH
REV	2	DATE	10/10/00	BY	W. GRIFFITH
REV	3	DATE	10/10/00	BY	W. GRIFFITH
REV	4	DATE	10/10/00	BY	W. GRIFFITH
REV	5	DATE	10/10/00	BY	W. GRIFFITH

Customer Drawing: 1007791G=5646617



5646617-1 SUB-ASSEMBLY
 (60 POSITIONS)
 OBSOLETE



5646617-2 SUB-ASSEMBLY
 (80 POSITIONS)

POWER/GROUND CONTACT
 LOAD PATTERN
 (MATING FACE)

ITEM DESCRIPTION	LEAD LENGTH REF	POST LENGTH REF	ITEM NUMBER
POWER/GROUND	.145	.237	5
SIGNAL	.145	.205	4
SIGNAL	.145	.175	3

THIS DRAWING IS A CONTROLLED DOCUMENT. IN POLYCHROME DRAWN BY: **Extron** Tyso Electronics Corporation
 Haverhill, Pa 17105-3608

DATE: 10/20/08
 DRAWN BY: **Extron**
 CHECKED BY: **Extron**
 APPROVED BY: **Extron**

DESCRIPTION: 2-PACK StripLine 100, PIN HEADER SUB-ASSEMBLY
 RIGHT END MODULE
 3.68 [145] ACTION PIN LEAD LENGTH

REV: 1
 DATE: 10/20/08
 DRAWN BY: **Extron**
 CHECKED BY: **Extron**
 APPROVED BY: **Extron**

CUSTOMER DRAWING: A100779(G)=5646617
 SHEET: 41 OF 2