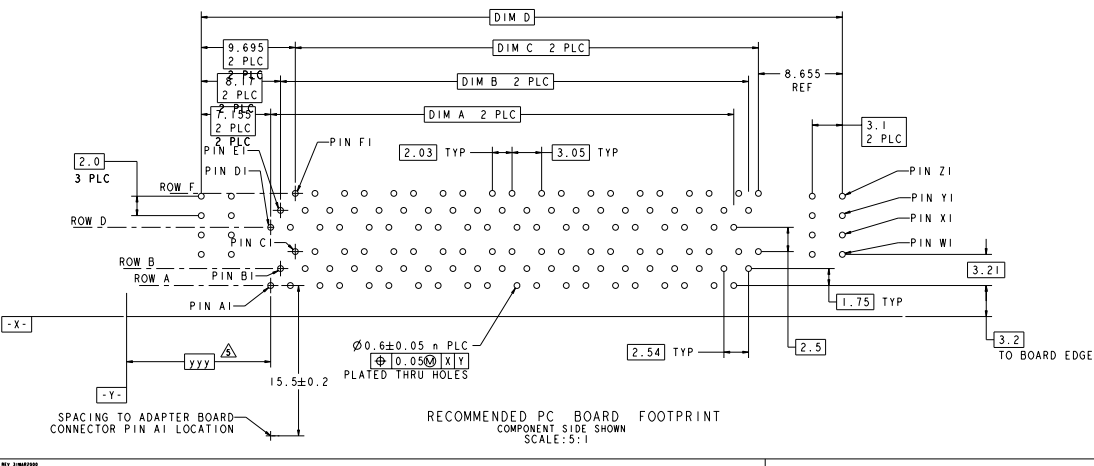
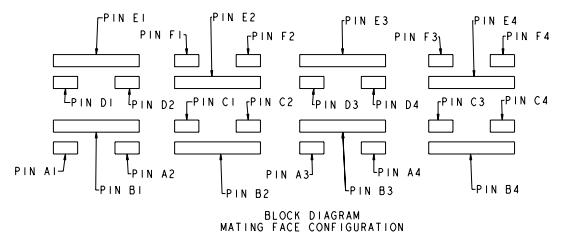
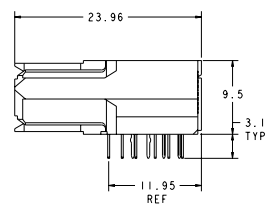
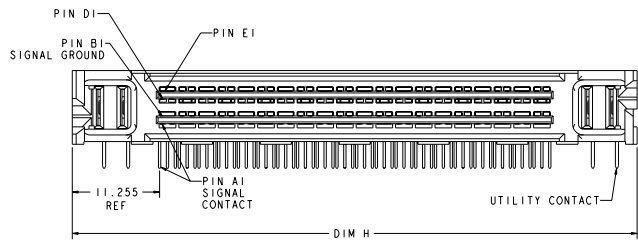
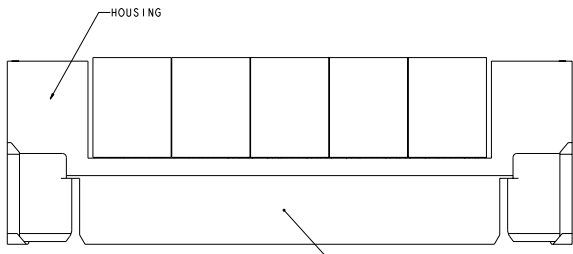


REV		REV		REV		REV		REV	
NO	DATE	BY	CHKD	NO	DATE	BY	CHKD	NO	DATE
00									
1									
2									

- △ HOUSINGS: POLYESTER, UL 94 V-0 RATED, NATURAL SIGNAL AND SIGNAL GROUND CONTACTS: COPPER ALLOY UTILITY CONTACTS: PHOSPHOR BRONZE
- △ UTILITY CONTACTS: 0.76um MIN GOLD IN CONTACT AREA, 2.54um MIN TIN ON PCB TAILS, OVER 1.27um MIN NICKEL OVER ALL. SIGNAL AND SIGNAL GROUND CONTACTS: 0.76um MIN GOLD IN CONTACT AREA, 2.54um MIN TIN ON PCB TAILS, OVER 1.27um MIN NICKEL OVER ALL.
- 3. ROWS A, C, D, AND F ARE SIGNAL CONTACTS. ROWS B AND E ARE SIGNAL GROUND CONTACTS.
- △ CONNECTOR SIZE CAN ACCOMMODATE INDICATED QUANTITY OF DIFFERENTIAL PAIRS.
- △ DIMENSIONS PER CUSTOMER BOARD LAYOUT.
- △ COMPANY LOGO IN APPROXIMATE AREA SHOWN.



N	H	D	B	A OR C	DIFF PAIRS	PART NUMBER
232	113.44	106.74	88.90	88.39	72	6367580-9
208	103.28	96.58	78.74	78.23	64	6367580-8
184	93.12	86.42	68.58	68.07	56	6367580-7
160	82.96	76.26	58.42	57.91	48	6367580-6
136	72.80	66.10	48.26	47.75	40	6367580-5
112	62.64	55.94	38.10	37.59	32	6367580-4
88	52.48	45.78	27.94	27.43	24	6367580-3
64	42.32	35.62	17.78	17.27	16	6367580-2
40	32.16	25.46	7.62	7.11	8	6367580-1

DATE: 08/12/2010	DESIGNED BY: J. BEESER	DATE: 08/12/2010	DESIGNED BY: J. BEESER
DRAWN BY: J. BEESER	CHECKED BY: J. BEESER	DATE: 08/12/2010	DATE: 08/12/2010
SCALE: 5:1	SCALE: 5:1	SCALE: 5:1	SCALE: 5:1
PROJECT: 114-13658	PROJECT: 114-13658	PROJECT: 114-13658	PROJECT: 114-13658
REV: 1	REV: 1	REV: 1	REV: 1
REV: 2	REV: 2	REV: 2	REV: 2
REV: 3	REV: 3	REV: 3	REV: 3
REV: 4	REV: 4	REV: 4	REV: 4
REV: 5	REV: 5	REV: 5	REV: 5
REV: 6	REV: 6	REV: 6	REV: 6
REV: 7	REV: 7	REV: 7	REV: 7
REV: 8	REV: 8	REV: 8	REV: 8
REV: 9	REV: 9	REV: 9	REV: 9
REV: 10	REV: 10	REV: 10	REV: 10