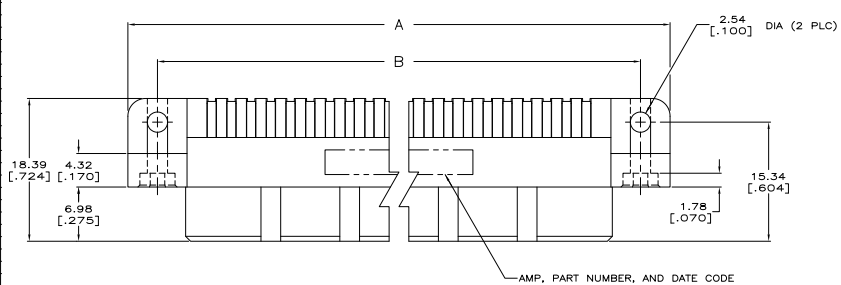
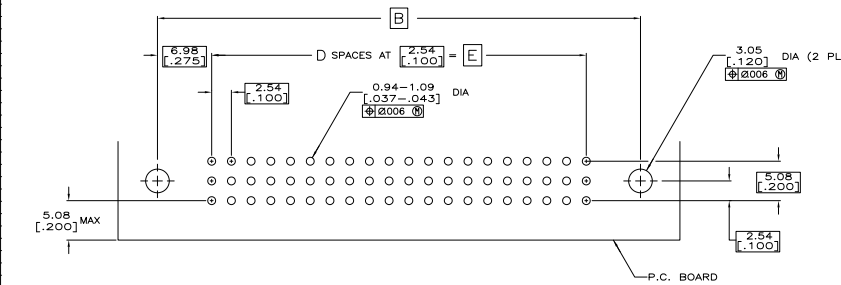
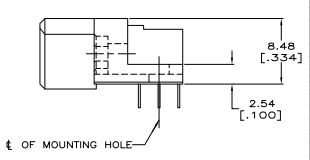
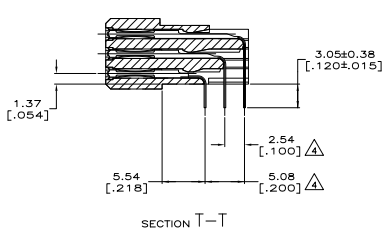
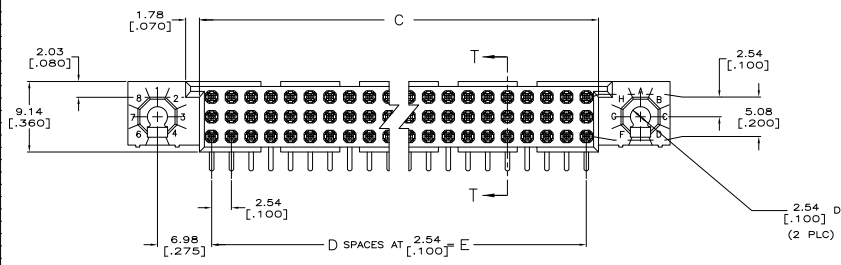


THIS DRAWING IS UNCLASSIFIED
 UNLESS INDICATED OTHERWISE
 © 2018 TTI ELECTRONICS CORPORATION ALL RIGHTS RESERVED

REVISES		DATE	BY	APP'D
AD	00			
M1				



AMP, PART NUMBER, AND DATE CODE



THIS DRAWING IS A CONTROLLED DOCUMENT.		DATE	BY	APP'D
DATE	REVISED FOR ECO-02-013676	DATE	BY	APP'D

INCHES	MM	DATE	BY	APP'D
1/16	1.588	10/1/18	AD	AS
1/8	3.175	10/1/18	AD	AS
3/16	4.763	10/1/18	AD	AS
1/4	6.350	10/1/18	AD	AS
5/16	7.938	10/1/18	AD	AS
3/8	9.525	10/1/18	AD	AS
1/2	12.700	10/1/18	AD	AS
5/8	15.875	10/1/18	AD	AS
3/4	19.050	10/1/18	AD	AS
7/8	22.225	10/1/18	AD	AS
1	25.400	10/1/18	AD	AS

DATE	REVISED FOR ECO-02-013676	DATE	BY	APP'D
DATE	REVISED FOR ECO-02-013676	DATE	BY	APP'D

DATE	REVISED FOR ECO-02-013676	DATE	BY	APP'D
DATE	REVISED FOR ECO-02-013676	DATE	BY	APP'D

AMP 480 REV 2/2018

THIS DRAWING IS UNPUBLISHED. REVISIONS FOR PURCHASER. ALL RIGHTS RESERVED.

REV	DATE	DESCRIPTION	BY	CHK	APP
AD	00				

- △ HOUSING MATERIAL: THERMOPLASTIC, COLOR-NATURAL.
- △ CONTACT MATERIAL: COPPER ALLOY.
- △ CONTACT FINISH: .00127-.00254 [.000050-.000100] NICKEL UNDERPLATE ALL OVER; .00076 [.000030] GOLD PLATE IN CONTACT AREA, TIN-LEAD PLATED SOLDER TAILS.
- △ SOLDER TAILS MUST FIT HOLE PATTERN AS SHOWN ON THE RECOMMENDED P.C. BOARD LAYOUT.
- 5. DIMENSIONS IN BRACKETS ARE IN INCHES.
- △ HOUSINGS WITH CENTER MOUNTING IS RECOMMENDED FOR ASSEMBLIES HAVING 75 CONTACTS PER ROW OR MORE.
- △ PART NUMBER IS OBSOLETE.

22.86	9	26.01	36.83	44.45	30	2-533268-0
[.900]		[1.024]	[1.450]	[1.750]		
81.28	32	84.43	95.25	102.87	99	1-533268-9
[3.200]		[3.324]	[3.750]	[4.050]		
144.78	67	147.93	158.75	166.37	174	1-533268-8
[5.700]		[5.824]	[6.250]	[6.550]		
251.46	99	254.61	265.43	273.05	300	1-533268-7
[9.900]		[10.024]	[10.450]	[10.750]		
238.76	94	241.91	252.73	260.35	285	1-533268-6
[9.400]		[9.524]	[9.950]	[10.250]		
226.06	89	229.21	240.03	247.65	270	1-533268-5
[8.900]		[9.024]	[9.450]	[9.750]		
213.36	84	216.51	227.33	234.95	255	1-533268-4
[8.400]		[8.524]	[8.950]	[9.250]		
200.66	79	203.81	214.63	222.25	240	1-533268-3
[7.900]		[8.024]	[8.450]	[8.750]		
187.96	74	191.11	201.93	209.55	225	1-533268-2
[7.400]		[7.524]	[7.950]	[8.250]		
175.26	69	178.41	189.23	196.85	210	1-533268-1
[6.900]		[7.024]	[7.450]	[7.750]		
162.56	64	165.71	176.53	184.15	195	1-533268-0
[6.400]		[6.524]	[6.950]	[7.250]		
149.86	59	153.01	163.83	171.45	180	533268-9
[5.900]		[6.024]	[6.450]	[6.750]		
137.16	54	140.31	151.13	158.75	165	533268-8
[5.400]		[5.524]	[5.950]	[6.250]		
124.46	49	127.61	138.43	146.05	150	533268-7
[4.900]		[5.024]	[5.450]	[5.750]		
111.76	44	114.91	125.73	133.35	135	533268-6
[4.400]		[4.524]	[4.950]	[5.250]		
99.06	39	102.21	113.03	120.65	120	533268-5
[3.900]		[4.024]	[4.450]	[4.750]		
86.36	34	89.51	100.33	107.95	105	533268-4
[3.400]		[3.524]	[3.950]	[4.250]		
78.74	31	81.89	92.71	100.33	96	533268-3
[3.100]		[3.224]	[3.650]	[3.950]		
73.66	29	76.81	87.63	95.25	90	533268-2
[2.900]		[3.024]	[3.450]	[3.750]		
60.96	24	64.11	74.93	82.55	75	533268-1
[2.400]		[2.524]	[2.950]	[3.250]		
E	D	C	B	A	POSN	PART NUMBER

THIS DRAWING IS A CONTROLLED DOCUMENT. SEE THE SEQUENCE NO/REV. **Yasko Electronics Corporation** Harrisburg, PA 17105-3608

INCHES DIMENSIONS: UNLESS OTHERWISE SPECIFIED, DIMENSIONS ARE IN INCHES. TOLERANCES: .010 (MAX) FOR DIMENSIONS NOT SPECIFIED. DIMENSIONS IN BRACKETS ARE IN INCHES. UNLESS OTHERWISE SPECIFIED, DIMENSIONS ARE IN INCHES. TOLERANCES: .010 (MAX) FOR DIMENSIONS NOT SPECIFIED.

DATE: 00779 (000000) GOLD PLATE. PART NUMBER: 533268. REVISION: A1. CUSTOMER DRAWING. SHEET: 2 OF 2. MATERIAL: MI.