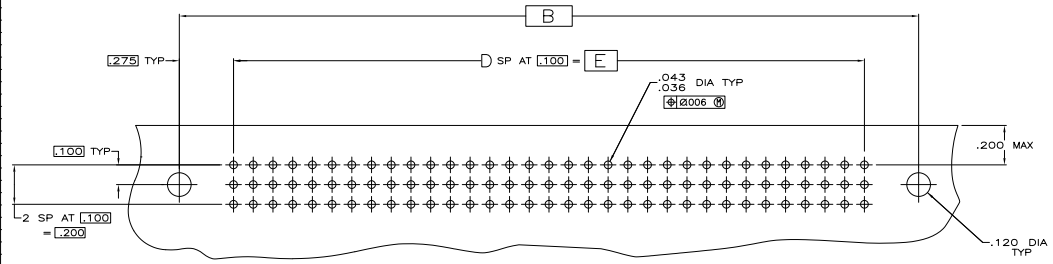
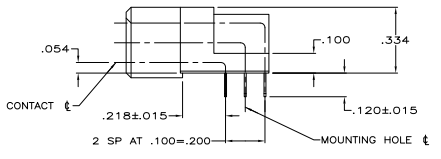
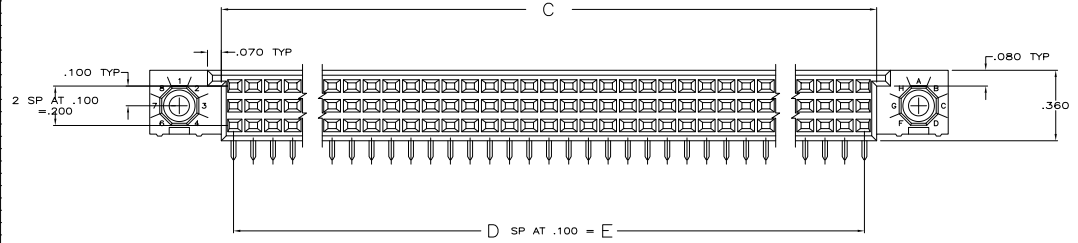
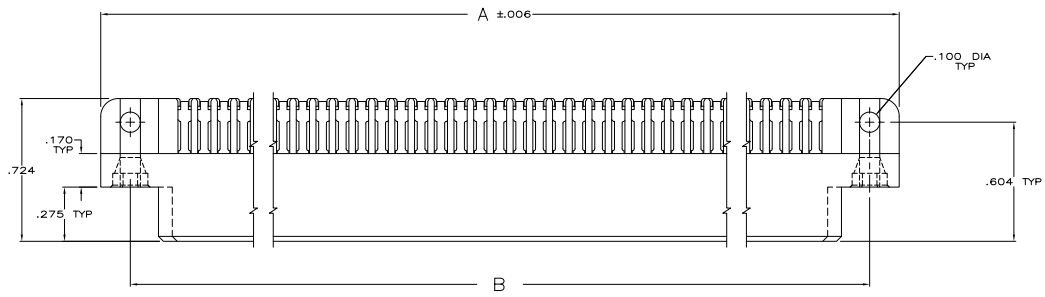


THIS DRAWING IS UNPUBLISHED
 © 1988 BY TYS ELECTRONICS CORPORATION. ALL RIGHTS RESERVED.

REV	DATE	BY	CHK	DESCRIPTION
J1				REVISED PER ECO-08-020208
J2				REVISED PER ECO-09-021624

- △ HOUSING MATERIAL: THERMOPLASTIC.
- △ CONTACT MATERIAL: COPPER ALLOY.
- △ CONTACT FINISH: .000050-.000100 NICKEL UNDERPLATE ALL OVER WITH .000030 GOLD IN CONTACT AREA AND .000100-.000200 TIN-LEAD PLATED POSTS.
- △ OBSOLETE PARTS: OBSOLETE CIS STREAMLINING PER D.RENAUD/D.SINISI



RECOMMENDED P.C. BOARD LAYOUT

	5,900	59	6,024	6,450	6,750	180	534026-9
OBsolete	5,400	54	5,524	5,950	6,250	165	534026-8
OBsolete	7,900	79	8,024	8,450	8,750	240	534026-7
OBsolete	7,400	74	7,524	7,950	8,250	225	534026-6
OBsolete	6,900	69	7,024	7,450	7,750	210	534026-5
OBsolete	4,900	49	5,024	5,450	5,750	150	534026-4
	3,900	39	4,024	4,450	4,750	120	534026-3
	3,100	31	3,224	3,650	3,950	96	534026-2
OBsolete	2,900	29	3,024	3,450	3,750	90	534026-1

THIS DRAWING IS A CONTROLLED DOCUMENT. CALL/COO: 610-311-1700 FAX: 610-311-1701
 ENGINEER: DAVID JOSEFMAN
 PROJECT: 108-1098
 CUSTOMER: 114-9008
 DATE: 11/11/88
 DRAWING NO: A100779
 CUSTOMER DRAWING

TYS Electronics Corporation
 Harrisburg, PA 17105-3608
 ASSEMBLY, RECEPTACLE,
 TWIN BEAM CONNECTOR,
 .120 POST LENGTH, 3 ROW, 2 MOUNTING HOLES,
 REWORKED TO

NO. OF POSN: E D C B A
 PART NUMBER: 534026-1

441 442 REV 2/1988