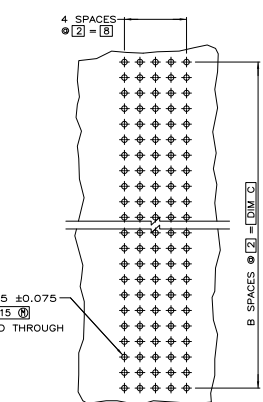
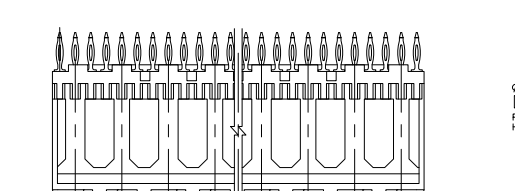
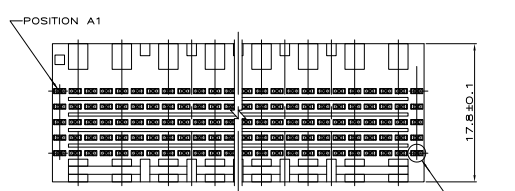
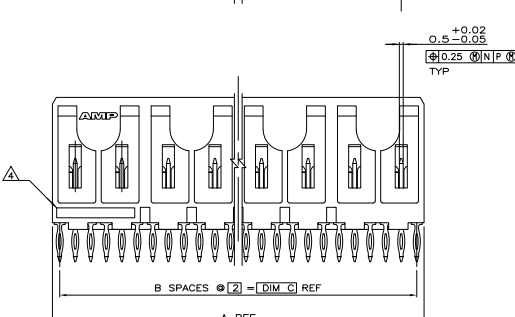
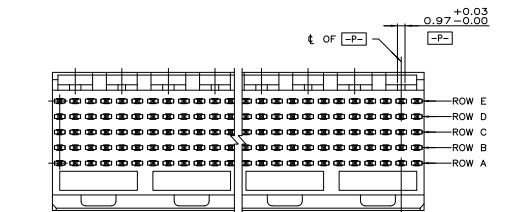
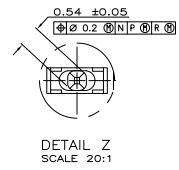


THIS DRAWING IS UNPUBLISHED  
 © 1988 BY TYS ELECTRONICS CORPORATION ALL RIGHTS RESERVED

REV	DATE	DESCRIPTION	BY	CHK	APP
AD	47				
N		REV PER EC 0512-0414-03			20FEB84 NK RW
N1		REVISED PER ECO-09-020689			26AUG09 KK AEG



- △ HOUSING MATERIAL: LIQUID CRYSTAL POLYMER  
COLOR: NATURAL.
- △ CONTACT MATERIAL: PHOSPHOR BRONZE
- △ CONTACT FINISH:  
UNDERPLATE (ENTIRE CONTACT):  
0.00127 MIN NICKEL  
ON MATING SURFACES:  
CONFORMS TO ALL TESTING SPECIFIED FOR TELCORDIA  
UNCONTROLLED ENVIRONMENT.  
ON LEADS  
0.0006 MIN TIN-LEAD OVER UNDERPLATE.  
LUBRICATION (ENTIRE CONTACT):  
SURFACE CONDITIONER PER AMP SPEC 112-1002 AFTER PLATING.
- △ PART MARKING LOCATED APPROXIMATELY AS SHOWN.
- △ DIMENSION APPLIES WHEN SEATED ON PRINTED CIRCUIT BOARD.
- △ OBSOLETE PARTS: OBSOLETE CIS STREAMLINING PER D.RENAUD/D.SINISI



△ OBSOLETE	260	130	131.88	△	330	1-223016-1
△ OBSOLETE	118	59	119.88	△	300	1-223016-0
△ OBSOLETE	106	53	107.88	△	270	223016-9
	94	47	95.88	△	240	223016-8
	82	41	83.88	△	210	223016-7
△ OBSOLETE	140	70	71.88	△	180	223016-6
	58	29	59.88	△	150	223016-5
	46	23	47.88	△	120	223016-4
	34	17	35.88	△	90	223016-3
	22	11	23.88	△	60	223016-2
	10	5	11.88	△	30	223016-1

C	B	A	FINISH	NO OF SIGNAL POSN	PART NUMBER

THIS DRAWING IS A CONTROLLED DOCUMENT. REVISED BY: TYS ELECTRONICS CORPORATION, Harrisburg, Pa 17105-3608

ASSEMBLY, PIN, SIGNAL, VERTICAL, Z-PACK, 2mm FB, 5 ROW, PRESS FIT LEADS

DATE: 00779, DRAWING NO: 223016, CUSTOMER DRAWING, SHEET 4.1 OF 1, NI