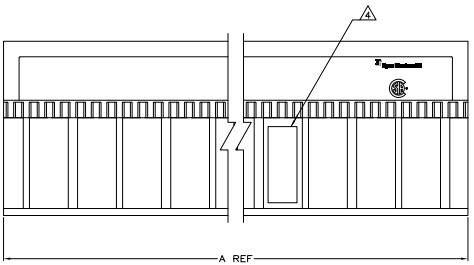
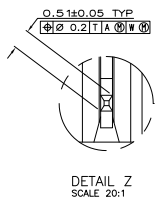
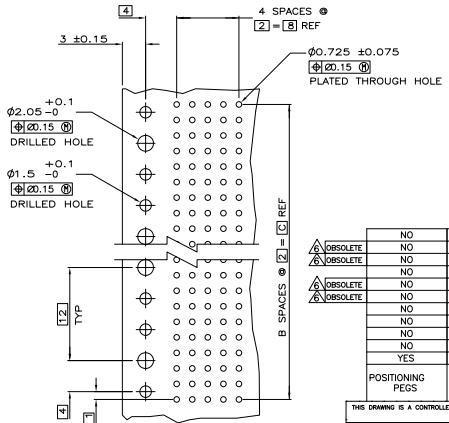
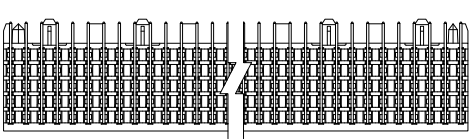
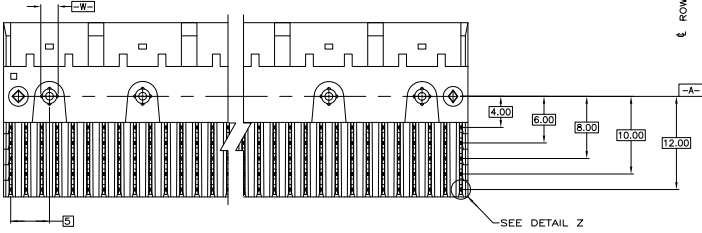
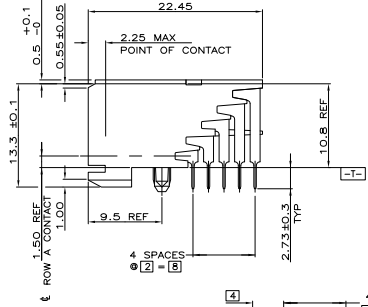
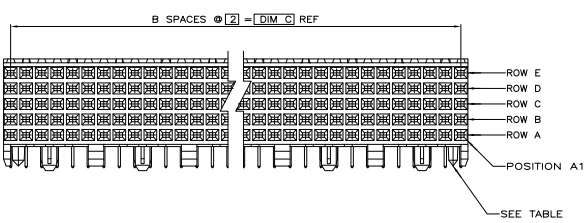


THIS DRAWING IS UNPUBLISHED. REPRODUCED FOR INFORMATION ONLY. ALL RIGHTS RESERVED.

REV	DATE	DESCRIPTION	BY	CHK
M1	08-08-08	REVISED PER ECO-08-08053	DH	AS
M2	09-02-08	REVISED PER ECO-09-021826	STANHO	KK AEG



- △ HOUSING MATERIAL: LIQUID CRYSTAL POLYMER
COLOR: NATURAL.
- △ CONTACT MATERIAL: PHOSPHOR-BRONZE.
- △ CONTACT FINISH:
UNDERPLATE (ENTIRE CONTACT):
0.00127 MIN NICKEL.
ON MATING SURFACES:
CONFORMS TO ALL TESTING SPECIFIED FOR TELCORDIA
UNCONTROLLED ENVIRONMENT.
ON LEADS
0.00381 MIN TIN-LEAD OVER UNDERPLATE.
LUBRICATION (ENTIRE CONTACT):
SURFACE CONDITIONER PER AMP SPEC 112-1002 AFTER PLATING.
- △ PART MARKING LOCATED APPROXIMATELY AS SHOWN.
- △ OBSOLETE PARTS: OBSOLETE CIS STREAMLINER PER D.RENAUD/D.SINISI



NO	130	65	131.88	350	1-223004-1	
OBSOLETE	NO	118	59	119.88	300	1-223004-0
OBSOLETE	NO	106	53	107.88	270	223004-9
NO	NO	94	47	95.88	240	223004-8
OBSOLETE	NO	82	41	83.88	210	223004-7
OBSOLETE	NO	70	35	71.88	180	223004-6
NO	NO	58	29	59.88	150	223004-5
NO	NO	46	23	47.88	120	223004-4
NO	NO	34	17	35.88	90	223004-3
NO	NO	22	11	23.88	60	223004-2
YES	NO	10	3	11.88	30	223004-1

RECOMMENDED CIRCUIT PATTERN
PER IPC-D300 TYPE II, CLASS C
(COMPONENT SIDE)

THIS DRAWING IS A CONTROLLED DOCUMENT.

DATE	REV	BY	CHK
08/08	01	DH	AS

Ypsil Technologies Corporation
Harrisburg, Pa 17105-3608

ASSEMBLY, RECEPTACLE, SIGNAL, RIGHT ANGLE,
Z-PACK 2mm FB, 5 ROW, SOLDER LEAD

SIZE: 4.1