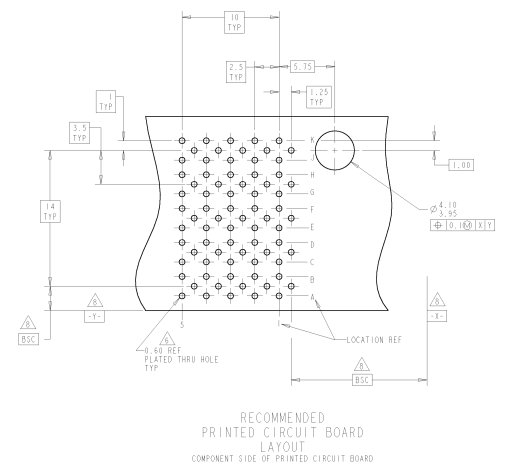
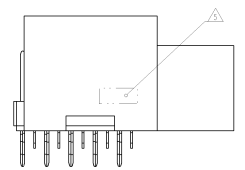
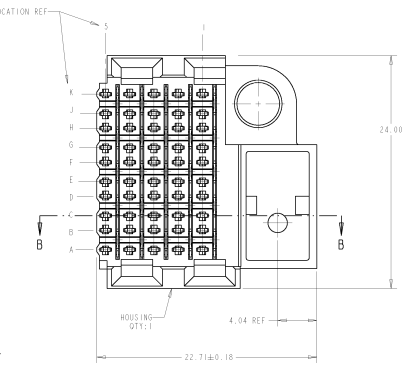
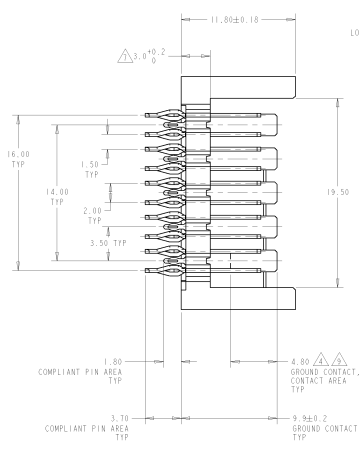
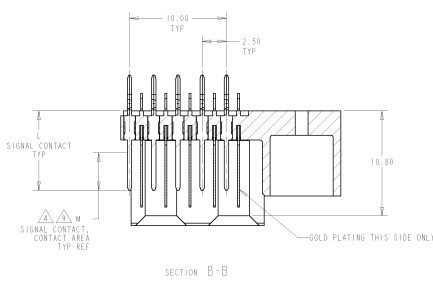


8	7	6	5	4	3	2	1
DATE MARKED TO SUPERSEDE	REVISED PER SPECIFICATION						
BY: [signature]	BY: [signature]						

REV	DATE	DESCRIPTION	BY	CHK	APP
0	00				
1		REV PER EC 0512-0324-04	BRADSHAW	BC	BP
2		REV PER EC 0512-0542-04	BRADSHAW	BC	BP
3		REV PER EC0-10-020709	BRADSHAW	BC	BP
4		REVISED PER EC0-10-020446	BRADSHAW	KK	AGC

- △ PHOSPHOR BRONZE
- △ LCP, UL94V-0
- △ 0.75µm MIN GOLD OVER 1.27µm MIN NICKEL UNDERPLATE OR GOLD FLASH OVER 0.75µm MIN PALLADIUM NICKEL OVER 1.27µm MIN NICKEL UNDERPLATE OR CONTACT AREA: 0.75µm MIN TIN LEAD OVER 1.27µm MIN NICKEL OR COMPLIANT PIN AREA
- △ CONNECTOR MARKED WITH PART NUMBER AND DATE CODE
- △ REFERENCE APPLICATION SPEC 114-13020 FOR RECOMMENDED PLATED THRU HOLE DIAMETER AND PLATING THICKNESS.
- △ APPLICATION SEATING HEIGHT TO PRINTED CIRCUIT BOARD
- △ DATINGS AND BASIC DIMENSIONS ESTABLISHED BY CUSTOMER
- △ CONTACT AREA LUBRICATED WITH BELLCORE APPROVED LUBRICANT (TECHNICAL REFERENCE: GR-1217 CORE, ISSUE 1, NOVEMBER 1995)
- △ OBSOLETE PARTS: OBSOLETE CIS STREAMLINING PER D REINAUDO SSMS



△ OBSOLETE	5.30	9.1	520672-1
	3.90	8.2	520672-1
	M	L	PART NUMBER

DATE MARKED TO SUPERSEDE	REVISED PER SPECIFICATION	DATE	BY	CHK	APP
BY: [signature]	BY: [signature]				
DATE MARKED TO SUPERSEDE	REVISED PER SPECIFICATION	DATE	BY	CHK	APP
BY: [signature]	BY: [signature]				
DATE MARKED TO SUPERSEDE	REVISED PER SPECIFICATION	DATE	BY	CHK	APP
BY: [signature]	BY: [signature]				