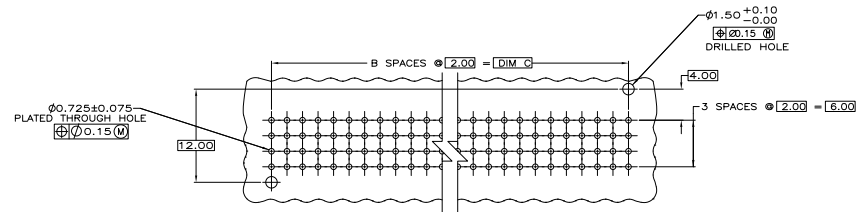
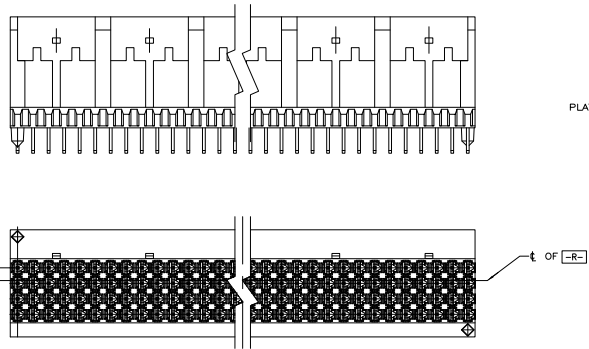
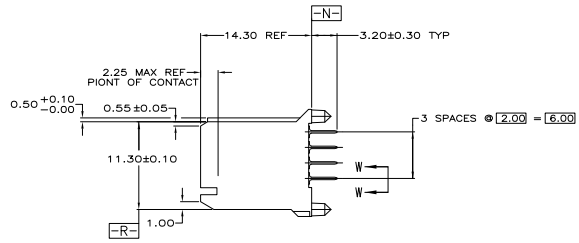
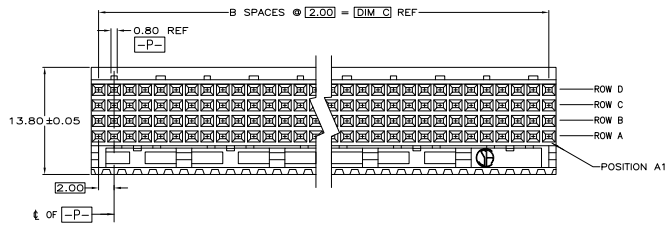
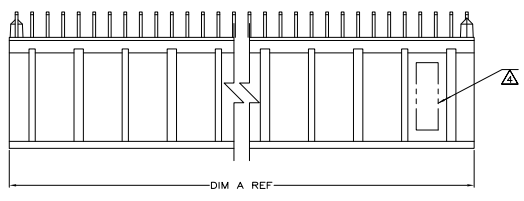
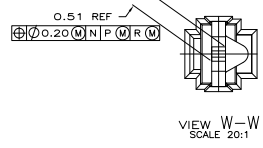


REV	DATE	DESCRIPTION	BY	APP
01	REVISED PER ECO-08-00293		JDF	RW
02	REVISED PER ECO-09-02406		STICTOR	KK/AEG

- ▲ HOUSING MATERIAL: LIQUID CRYSTAL POLYMER. COLOR: NATURAL
- ▲ CONTACT MATERIAL: PHOSPHOR-BRONZE
- ▲ CONTACT FINISH:(A)
 UNDERPLATE (ENTIRE CONTACT):
 0.00127 MIN NICKEL PER SAE-AMS-QQ-N-290
 ON MATING SURFACES:
 CONFORMS TO ALL TESTING SPECIFIED FOR TELCORDIA
 UNCONTROLLED ENVIRONMENT.
 ON LEADS:
 0.00381 MIN MATTE TIN PER ASTM B 545 OVER UNDERPLATE.
 LUBRICATION (MIN MATING SURFACES):
 SURFACE CONDITIONER AFTER PLATING.
- ▲ PART MARKING, LOCATED APPROXIMATELY AS SHOWN.
- ▲ OBSOLETE PARTS: OBSOLETE CIS STREAMLINING PER D.RENAUD/D.SINIS



RECOMMENDED CIRCUIT PATTERN
(COMPONENT SIDE)



VIEW W-W
SCALE 20:1

OBSOLETE	DIM C	B	DIM A	NUMBER OF SIGNAL POSITIONS	PART NUMBER
▲	94.00	47	95.88	192	5223660-8
▲	82.00	41	83.88	168	5223660-7
▲	70.00	35	71.88	144	5223660-6
▲	58.00	29	59.88	120	5223660-5
▲	46.00	23	47.88	96	5223660-4
▲	34.00	17	35.88	72	5223660-3
▲	22.00	11	23.88	48	5223660-2
▲	10.00	5	11.88	24	5223660-1

THIS DRAWING IS A CONTROLLED DOCUMENT.		APPROVED	DATE	BY	REVISION
DESIGNED	DATE	BY	DATE	BY	REVISION
CHECKED	DATE	BY	DATE	BY	REVISION
APPROVED	DATE	BY	DATE	BY	REVISION
CUSTOMER DRAWING		DATE	BY	DATE	BY

250 ELECTRONICS CORPORATION
 Harrisburg, PA 17105-3808
 ASSEMBLY, RECEPTACLE, SIGNAL, VERTICAL, 4 ROW,
 Z-PACK 2mm FB, WITH SOLDER LEADS
 DRAWING NO: 5223660
 SCALE: 4:1