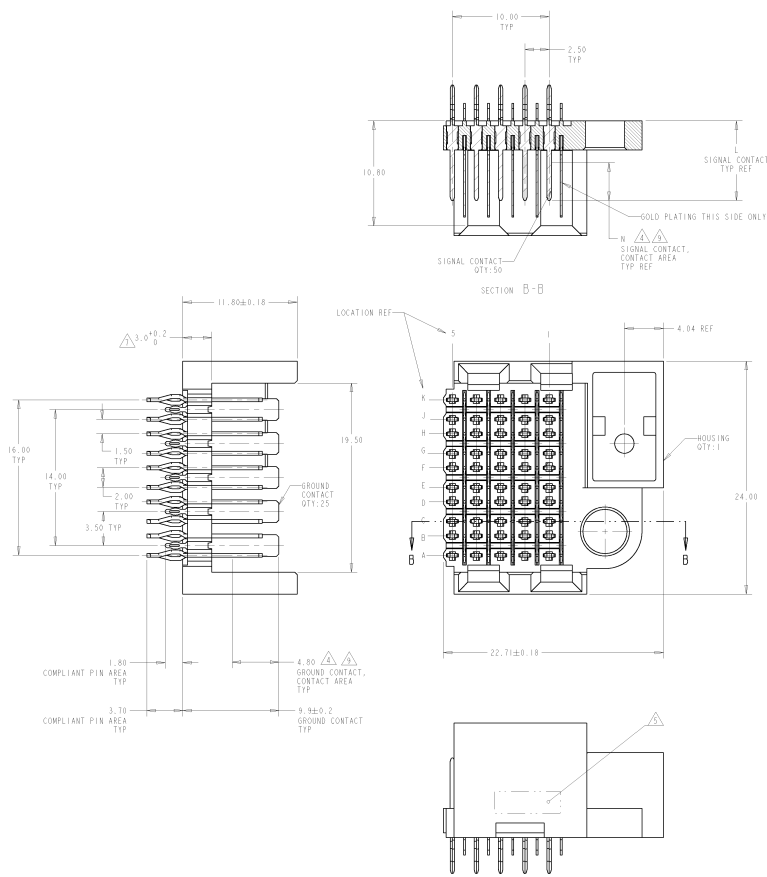
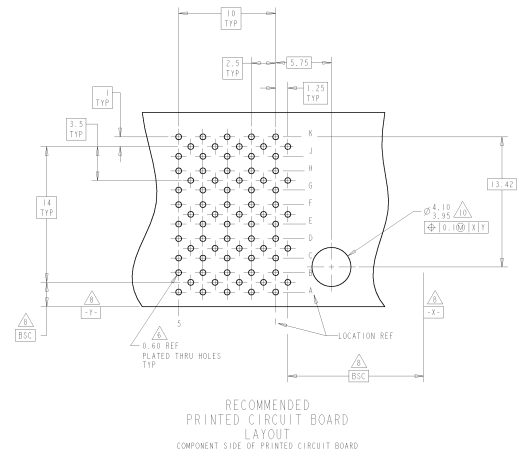


8	7	6	5	4	3	2	1
DATE STARTED TO MANUFACTURE		REVISIONS FOR MANUFACTURE					
AD		AD					
BY TOSH ELECTRONICS CORPORATION, ALL RIGHTS RESERVED							

REV	DATE	DESCRIPTION	BY	CHK	APP
47					
46		REV PER ECO-06-024579			



- △ PHOSPHOR BRONZE
- △ LCP, UL94V-0
- △ 0.75µm MIN GOLD OVER 1.27µm MIN NICKEL UNDERPLATE OR GOLD FLASH OVER 0.75µm MIN PALLADIUM NICKEL OVER 1.27µm MIN NICKEL UNDERPLATE OR CONTACT AREA: 0.75µm MIN TIN LEAD OVER 1.27µm MIN NICKEL OR COMPLIANT PIN AREA
- △ CONNECTOR MARKED WITH PART NUMBER AND DATE CODE
- △ REFERENCE APPLICATION SPEC 114-13020 FOR RECOMMENDED PLATED THRU HOLE DIAMETER AND PLATING THICKNESSES
- △ APPLICATION SEATING HEIGHT TO PRINTED CIRCUIT BOARD
- △ DIMENSIONS AND BASIC DIMENSIONS ESTABLISHED BY CUSTOMER
- △ LUBRICATE CONTACT AREA WITH BELLCORE APPROVED LUBRICANT TECHNICAL REFERENCE: GR-1211-CORE, ISSUE 1, NOVEMBER 1995
- △ HOLE DIAMETER SHOULD BE 3.10 WHEN USING FEED THROUGH GUIDE PIN PIN 120759 CLEARANCE FOR A M4x0.5 THREAD



5.30	9.7	120662-2
3.90	8.2	120662-1
M	L	AMP PART NUMBER

DATE: 11/04/06 DRAWN BY: AD CHECKED BY: AD APPROVED BY: AD MATERIAL: PHOSPHOR BRONZE, LCP, GOLD, TIN, NICKEL, PALLADIUM NICKEL, NICKEL UNDERPLATE, TIN LEAD, NICKEL		QTY: 50 PART NUMBER: 120662-1 DATE: 11/04/06	TOSH ELECTRONICS CORPORATION HARRISBURG, PA 17105-8808 Alcovore HEADERS ASSEMBLY, 50 POSITION, LEFT HAND, 10 ROW, 2-PACK HS3
CUSTOMER DRAWING: A PART NUMBER: 120662-1 REV: 47		PART NUMBER: 120662-1 REV: 47	