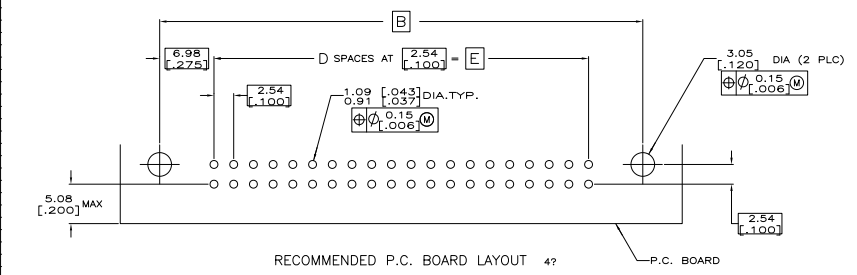
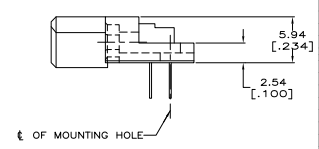
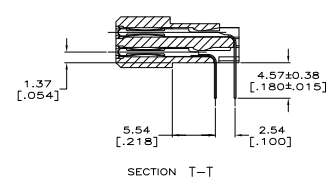
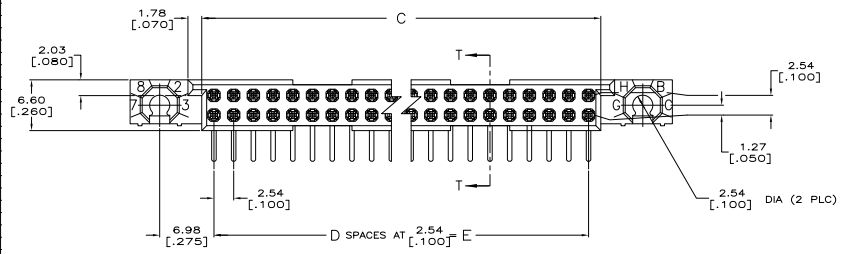
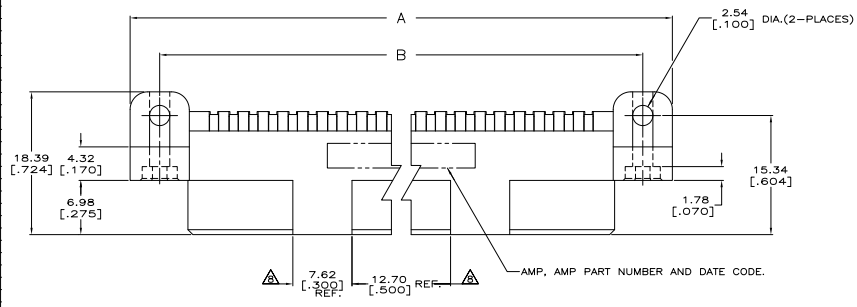


THIS DRAWING IS UNPUBLISHED. ALL RIGHTS RESERVED.
 © 2008 Tyco Electronics Corporation

REVISED FOR ECO-10-016781		REVISIONS	
REV	DATE	DESCRIPTION	BY
P2	23MUG10		DH



THIS DRAWING IS A CONTROLLED DOCUMENT.		DATE	BY	APP	REV
DRAWN BY: [Signature]		DATE: 10/10/08	BY: [Signature]	APP: [Signature]	REV: 1
CHECKED BY: [Signature]		DATE: 10/10/08	BY: [Signature]	APP: [Signature]	REV: 2
DESIGNED BY: [Signature]		DATE: 10/10/08	BY: [Signature]	APP: [Signature]	REV: P2
APPROVED BY: [Signature]		DATE: 10/10/08	BY: [Signature]	APP: [Signature]	REV: P2
CUSTOMER DRAWING		DATE: 10/10/08	BY: [Signature]	APP: [Signature]	REV: P2

AMP 480 REV 2/2008

THIS DRAWING IS UNPUBLISHED
 UNLESS OTHERWISE SPECIFIED IN THIS DRAWING
 ALL RIGHTS RESERVED

REV	DATE	DESCRIPTION	BY	CHK	APP
AD	00	SEE SHEET 1			

- △ HOUSING MATERIAL: THERMOPLASTIC, COLOR-NATURAL.
- △ CONTACT MATERIAL: COPPER ALLOY.
- △ CONTACT FINISH: .00127-.00254 [.000050-.000100] NICKEL
UNDERPLATE ALL OVER; .00078 [.000030] GOLD PLATE IN CONTACT AREA, TIN-LEAD PLATED SOLDER TAILS.
- △ SOLDER TAILS MUST FIT HOLE PATTERN AS SHOWN ON THE RECOMMENDED P.C. BOARD LAYOUT.
- 5. DIMENSIONS IN BRACKETS ARE IN INCHES.
- △ HOUSINGS WITH CENTER MOUNTING IS RECOMMENDED FOR ASSEMBLIES HAVING 75 CONTACTS PER ROW OR MORE.
- △ PART NUMBER IS OBSOLETE.
- △ QUANTITIES OF VOID CORING ARE DEPENDENT ON THE POSITION SIZE OF THE HOUSING.
- △ OBSOLETE PARTS: OBSOLETE CIS STREAMLINING PER D.RENAUD/D.SINISI

QTY	POSN	PART NUMBER	DESCRIPTION	UNIT	QTY	POSN	PART NUMBER	DESCRIPTION	UNIT
168	2	532428-1			168	2	532428-1		
---	---	---			---	---	---		
---	---	---			---	---	---		
---	---	---			---	---	---		
180	1	532428-8			180	1	532428-8		
---	---	---			---	---	---		
160	1	532428-6			160	1	532428-6		
200	1	532428-5			200	1	532428-5		
150	1	532428-4			150	1	532428-4		
140	1	532428-3			140	1	532428-3		
---	---	---			---	---	---		
---	---	---			---	---	---		
120	1	532428-1			120	1	532428-1		
110	1	532428-0			110	1	532428-0		
100	532428-9				100	532428-9			
---	---	---			---	---	---		
---	---	---			---	---	---		
80	532428-7				80	532428-7			
70	532428-6				70	532428-6			
60	532428-5				60	532428-5			
50	532428-4				50	532428-4			
40	532428-3				40	532428-3			
---	---	---			---	---	---		
---	---	---			---	---	---		
20	532428-2				20	532428-2			
---	---	---			---	---	---		

THIS DRAWING IS A CONTROLLED DOCUMENT.		REVISED BY	DATE
DRAWN BY		DATE	
CHECKED BY		DATE	
APPROVED BY		DATE	
PROJECT		HDI, 2 ROW, RECEPTACLE ASSEMBLY, 4.57 [180] LONG SOLDER TAILS, .00078 [.000030] GOLD PLATE.	
CUST. NO.		A100779	
CUST. DRAWING		SEE SHEET 1	