

4

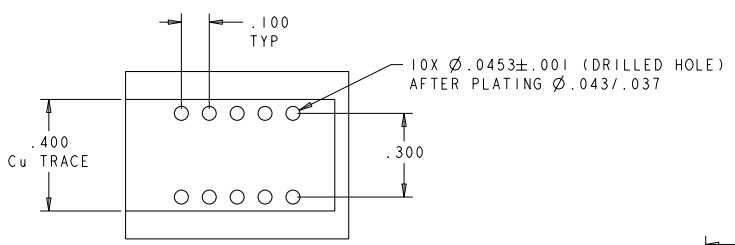
3

2

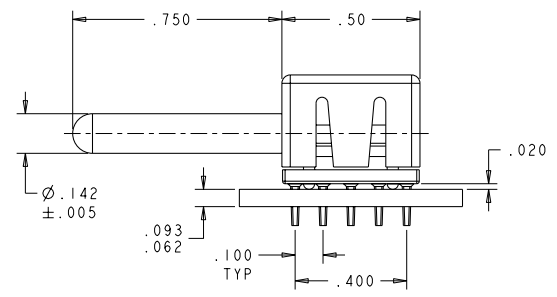
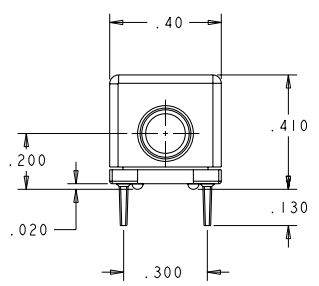
1

THIS DRAWING IS UNPUBLISHED. BY TYCO ELECTRONICS CORPORATION. ALL RIGHTS RESERVED.

REV	DATE	BY	APPROV
A	26 JUN 08	RG	DO
B	11 JAN 2011	RG	NE



RECOMMENDED FOOTPRINT



- PART NUMBER CHANGES AND/OR DESIGN CHANGES AFFECTING ITEM INTERCHANGEABILITY REQUIRE PRIOR TYCO ELECTRONICS APPROVAL AND AUTHORIZATION BY REVISION TO THIS DRAWING.
- ITEMS PROVIDED TO THIS SPECIFICATION SHALL BE IDENTIFIED ON THE CONTAINER WITH THE FOLLOWING INFORMATION:
PART NUMBER AND DATE CODE OF MANUFACTURING.

MATERIAL:
 INSULATOR: POLYESTER, GLASS FILLED, COLOR BLACK
 94V-0 RATED
 SOCKET BODY: ZINC METAL CASTING
 CROWN BAND: COPPER ALLOY
 PIN CONTACT: BRASS ALLOY
 SOLDER TAIL: PHOSPHOR BRONZE

FINISH:
 CROWN BAND: GOLD PLATE .000030 MIN THK. OVER
 NICKEL .000050 MIN THK.
 SOLDER TAIL: SILVER PLATE .000200 MIN THK. OVER
 NICKEL .000050 MIN THK.
 SOCKET BODY: SILVER PLATE .000200 MIN THK. OVER
 NICKEL .000050 MIN THK.

AS SHOWN	6643432-1
DESCRIPTION	PART NO.

DIMENSIONS: INCHES 0 PLC ±.010 1 PLC ±.010 2 PLC ±.010 3 PLC ±.020 4 PLC ±.010 ANGLES ±.3°		DATE: 26 JUN 08 NAME: S. FLICKLINGER APPLICATION SPEC: - WEIGHT: - FINISH: - CUSTOMER DRAWING	DATE: 26 JUN 08 NAME: S. FLICKLINGER PRODUCT SPEC: - APPLICATION SPEC: - WEIGHT: - FINISH: - CUSTOMER DRAWING	Tyco Electronics Harrisburg, PA 17105-3608 PIN, PARALLEL SOLDER, NON-LOCKING STYLE ICCON	SHEET: A2 CASE CODE: 00779 DRAWING NO: 6643432 RESTRICTED TO: - SCALE: 4:1 SHEET 1 OF 1 REV B
--	--	--	---	--	---