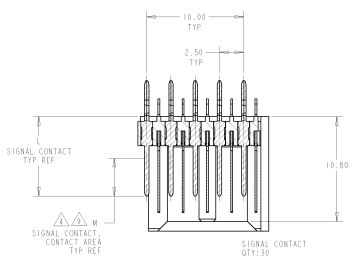


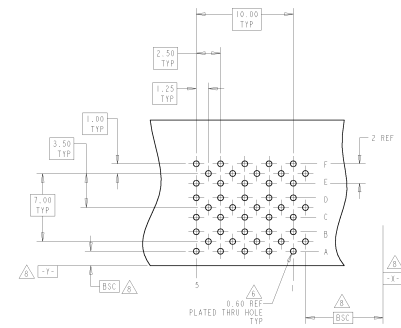
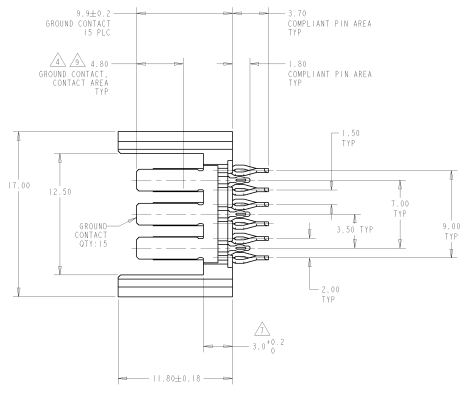
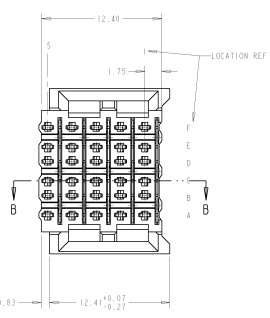
8	7	6	5	4	3	2	1
DATE REVISIONS TO BE MAINTAINED		REVISIONS					
BY: [Signature]		BY: [Signature]					

REV	DATE	DESCRIPTION	BY	CHK	APP
00					
01		REV PER EC-06-024579			
02		REV PER EC-06-024579			

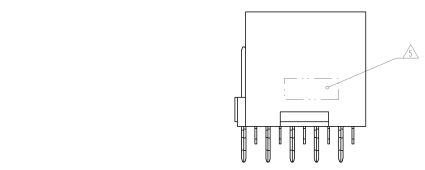
- ⚠ PHOSPHOR BRONZE
- ⚠ LCP, UL94V-0
- ⚠ 0.16µm MIN GOLD OVER 1.27µm MIN NICKEL UNDERPLATE OR GOLD FLASH OVER 0.76µm MIN PALLADIUM-NICKEL OVER 1.27µm MIN NICKEL UNDERPLATE ON CONTACT AREA, 0.16µm MIN TIN LEAD OVER 1.27µm MIN NICKEL ON COMPLIANT PIN AREA
- ⚠ CONNECTOR MARKED WITH PART NUMBER AND DATE CODE
- ⚠ REFERENCE APPLICATION SPEC 114-13020 FOR RECOMMENDED PLATED THRU HOLE DIAMETER AND PLATING THICKNESS.
- ⚠ APPLICATION SEATING HEIGHT TO PRINTED CIRCUIT BOARD
- ⚠ DATINGS AND BASIC DIMENSIONS ESTABLISHED BY CUSTOMER
- ⚠ CONTACT AREA LUBRICATED WITH BELLCORE APPROVED LUBRICANT TECHNICAL REFERENCE: BR-1217-CORE, ISSUE 1, NOVEMBER 1995



SECTION B-B



RECOMMENDED PRINTED CIRCUIT BOARD LAYOUT
COMPONENT SIDE OF PRINTED CIRCUIT BOARD



5.30	9.7	5120732-2
3.90	8.2	5120732-1
M	L	PART NUMBER

STYCO 1000 W. MARKET STREET, PHILADELPHIA, PA 19104-1000 TEL: (215) 382-1000 FAX: (215) 382-1001		STYCO 1000 W. MARKET STREET, PHILADELPHIA, PA 19104-1000 TEL: (215) 382-1000 FAX: (215) 382-1001	
PART NUMBER: 5120732-2 REV: 00 DATE: 08/18/00 BY: [Signature]	PART NUMBER: 5120732-1 REV: 00 DATE: 08/18/00 BY: [Signature]	PART NUMBER: 5120732-2 REV: 00 DATE: 08/18/00 BY: [Signature]	PART NUMBER: 5120732-1 REV: 00 DATE: 08/18/00 BY: [Signature]
STYCO 1000 W. MARKET STREET, PHILADELPHIA, PA 19104-1000 TEL: (215) 382-1000 FAX: (215) 382-1001		STYCO 1000 W. MARKET STREET, PHILADELPHIA, PA 19104-1000 TEL: (215) 382-1000 FAX: (215) 382-1001	