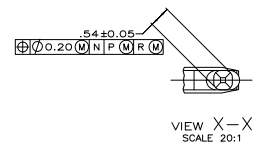
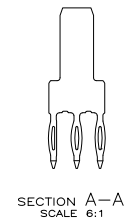
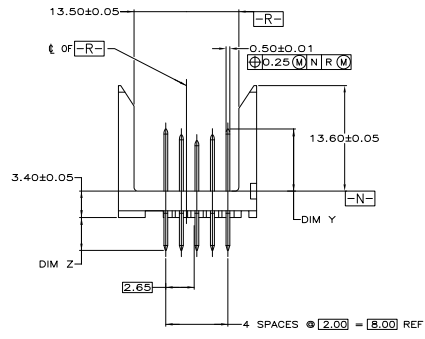
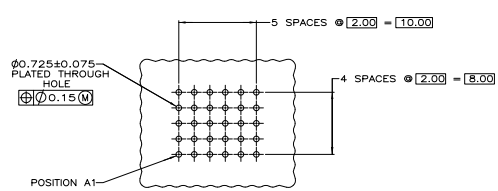
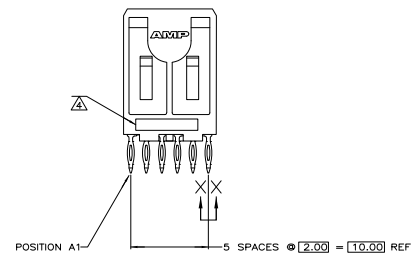
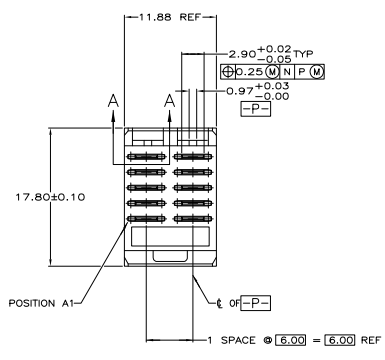


REV	DATE	DESCRIPTION	BY	APP'D
AD 00				
A		REVISED PER ECO-05-01006	2105205	JDF/RW



- △ HOUSING MATERIAL: LIQUID CRYSTAL POLYMER.
COLOR: NATURAL.
- △ CONTACT MATERIAL: PHOSPHOR BRONZE.
- △ CONTACT FINISH:
UNDERPLATE (ENTIRE CONTACT):
0.00127 MIN NICKEL PER SAE-AMS-QQ-N-290
ON MATING SURFACES:
FLASH GOLD PER ASTM B 488, OVER
0.00076 MIN PALLADIUM-NICKEL OVER UNDERPLATE, OR
0.00076 MIN GOLD PER ASTM B 488 OVER UNDERPLATE.
ON LEADS:
0.00127 MIN MATTE TIN PER ASTM B 545 OVER UNDERPLATE.
LUBRICATION (MIN MATING SURFACES):
SURFACE CONDITIONER AFTER PLATING.
- △ PART MARKING, LOCATED APPROXIMATELY AS SHOWN.
APPROXIMATELY AS SHOWN.

THIS DRAWING IS A CONTROLLED DOCUMENT.		REVISED PER ECO-05-01006	5536673-1
FINISH		PART NUMBER	
DESIGNER: J. KINLOCK	DATE: 11/88	DESIGNED BY: J. KINLOCK	DATE: 11/88
CHECKED BY: J. KINLOCK	DATE: 11/88	APPROVED BY: J. KINLOCK	DATE: 11/88
TSS ELECTRONICS CORPORATION Harrisburg, PA 17105-3608		PIN ASSY, POWER, VERTICAL, 2-PACK 2mm FB, PRESS FIT LEADS, SEQUENCED BY ROW	
SIZE: A1	DATE: 00779	DRAWING NO: G=5536673	REWORKED TO: A
CUSTOMER DRAWING	TABLE: 4-1	SHEET: 1	TOTAL SHEETS: 1