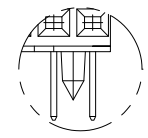
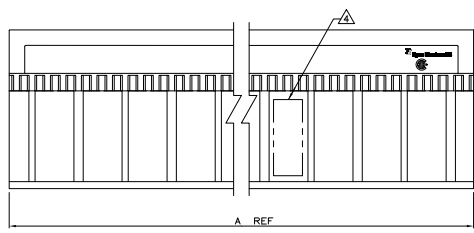
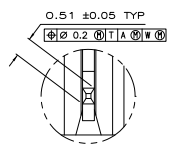
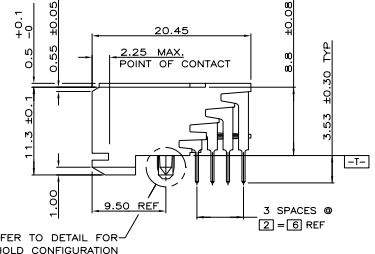
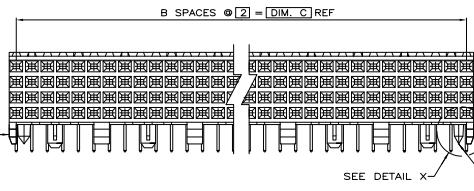


REV	DATE	DESCRIPTION	BY	CHK	APP
AD	00				
AD2		REVISED PER ECO-08-009162	17APR08	DH	AS
AD3		REVISED PER ECO-10-000443	18MAY10	KK	HMR

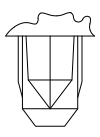
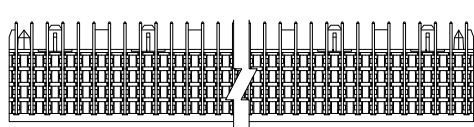
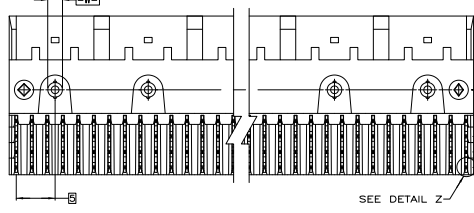


DETAIL X
SCALE 10:1

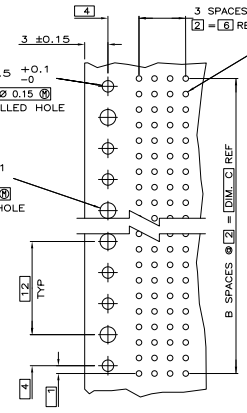
- △ HOUSING MATERIAL: LIQUID CRYSTAL POLYMER. COLOR: NATURAL.
- △ CONTACT MATERIAL: PHOSPHOR-BRONZE.
- △ CONTACT FINISH: UNDERPLATE (ENTIRE CONTACT) - 0.00127 MIN. NICKEL ON MATING SURFACES - CONFORMS TO ALL TESTING SPECIFIED FOR TELCORDIA UNCONTROLLED ENVIRONMENT ON LEADS - 0.00381 MIN. TIN-LEAD, OVER UNDERPLATE LUBRICATION (ENTIRE CONTACT): SURFACE CONDITIONER PER TYCO SPEC 112-1002 AFTER PLATING.
- △ PART MARKING PER AMP INCORPORATED SPECIFICATION 115-9009, LOCATED APPROXIMATELY AS SHOWN.
- △ CUSTOMIZED PART, HOUSING MOLDED WITHOUT END GUIDE LUGS.
- △ OBSOLETE PART NUMBER.
- △ OBSOLETE PARTS: OBSOLETE CIS STREAMLINING PER D.RENAUD/D.SINISI



DETAIL Z
SCALE 20:1



TYPICAL COLD HOLD FOR ALL ASSEMBLIES



RECOMMENDED CIRCUIT PATTERN PER IPC-D300 TYPE II, CLASS C (COMPONENT SIDE)

- △ SUPERCEDED BY 5336510-8
- △ OBSOLETE

YES	94	47	95.88	△	192	2-536510-4	
YES	46	23	47.88	△	96	2-536510-3	
NO	34	17	35.88	△	72	1-536510-5	
NO	22	11	23.88	△	48	1-536510-4	
NO	94	47	95.88	△	192	1-536510-3	
NO	106	53	107.88	△	216	1-536510-2	
NO	70	35	71.88	△	144	1-536510-1	
NO	130	65	131.88	△	264	1-536510-0	
OBSOLETE	NO	106	53	107.88	△	216	536510-0
OBSOLETE	NO	118	59	119.88	△	240	536510-8
OBSOLETE	NO	82	41	83.88	△	168	536510-7
OBSOLETE	NO	58	29	59.88	△	120	536510-6
OBSOLETE	NO	70	35	71.88	△	144	536510-5
OBSOLETE	NO	94	47	95.88	△	192	536510-4
OBSOLETE	NO	46	23	47.88	△	96	536510-3
OBSOLETE	NO	22	11	23.88	△	48	536510-2
OBSOLETE	YES	10	5	11.88	△	24	536510-1

POSITIONING PEGS	C	B	A	FINISH	NO OF POSN	PART NUMBER

THIS DRAWING IS A CONTROLLED DOCUMENT. DATE: 07/20/08 BY: [Signature] TITLE: [Signature] COMPANY: Tyco Electronics Corporation, Harrisburg, Pa 17105-3008

REVISIONS: 1. REVISION 1: RECEPTACLE ASSEMBLY, SIGNAL MODULE, Z-PACK 2mm FB, 4 ROW, 3.52mm LEAD LENGTH. DATE: 07/20/08 BY: [Signature] TITLE: [Signature] COMPANY: Tyco Electronics Corporation

CUSTOMER DRAWING: A100779 (C)=5365110 DATE: 4.1 SHEET: 1 OF 1