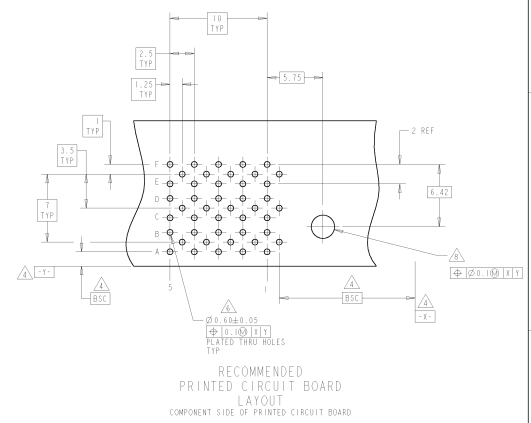
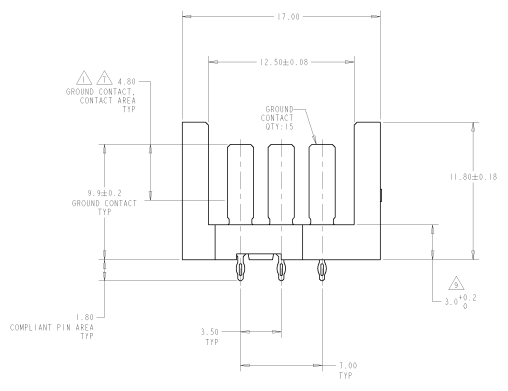
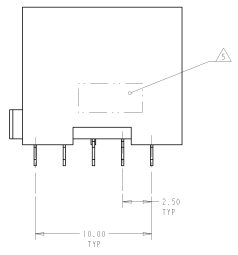
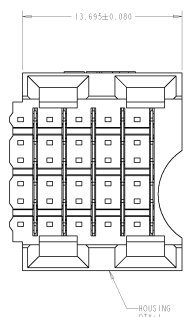


8	7	6	5	4	3	2	1
DATE REVISIONS	REVISIONS						
DATE	DESCRIPTION	BY	CHKD	APPD			

REV	DATE	DESCRIPTION	BY	CHKD	APPD
A	0818-0276-00	REVISED PER 0018-0276-00	JUNWHL	DAS	BAP
B	0018-0078-01	REVISED PER 0018-0078-01	JUNWHL	DAS	BAP
-	-	-	-	-	-
-	-	-	-	-	-

- △ GOLD FLASH OVER 0.15µm MIN PALLADIUM NICKEL OVER 1.27µm MIN NICKEL ON CONTACT AREA
0.5µm MIN TIN LEAD OVER 1.27µm MIN NICKEL ON COMPLIANT PIN AREA.
- △ PHOSPHOR BRONZE
- △ GLASS FILLED POLYESTER
- △ DATUMS AND BASIC DIMENSIONS ESTABLISHED BY CUSTOMER
- △ CONNECTOR MARKED WITH PART NUMBER AND DATE CODE
- △ DRILLED HOLE DIAMETER 0.740±0.025
FINISHED HOLE DIA 0.680±0.05 REF
COPPER THICKNESS 0.002±0.050
TIN LEAD THICKNESS 0.004±0.010
- △ CONTACT AREA LUBRICATED WITH BELLECORD APPROVED LUBRICANT
TECHNICAL REFERENCE: GR-1277-CORE, ISSUE 1, NOVEMBER 1993
- △ HOLE DIAMETER:
2.4 FOR USE WITH P/N 532828, STATIC DISCHARGE, GUIDE PIN, HDI
3.4 FOR USE WITH P/N 120759, FEED THROUGH, GUIDE PIN
- △ APPLICATION SEATING HEIGHT TO PRINTED CIRCUIT BOARD



RECOMMENDED PRINTED CIRCUIT BOARD LAYOUT
COMPONENT SIDE OF PRINTED CIRCUIT BOARD

120684-1
PART NUMBER

DATE	REV	DESCRIPTION	BY	CHKD	APPD
0818-0276-00	A	REVISED PER 0818-0276-00	JUNWHL	DAS	BAP
0018-0078-01	B	REVISED PER 0018-0078-01	JUNWHL	DAS	BAP
-	-	-	-	-	-
-	-	-	-	-	-