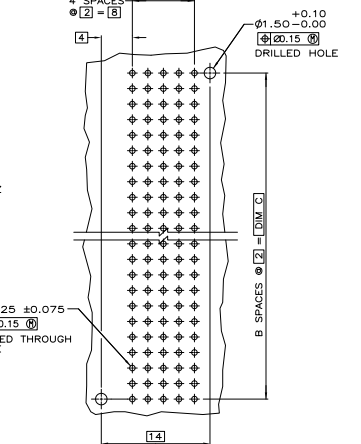
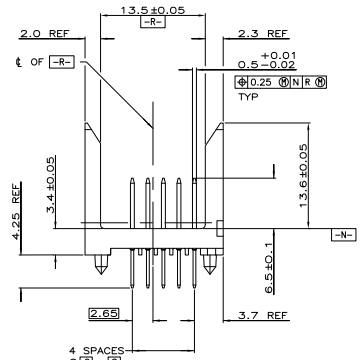
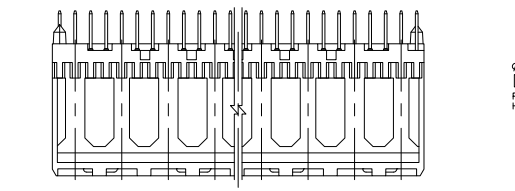
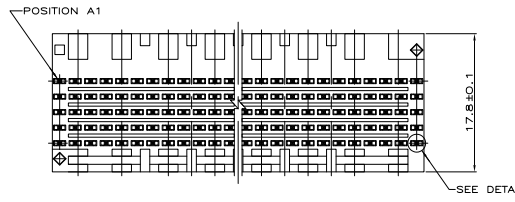
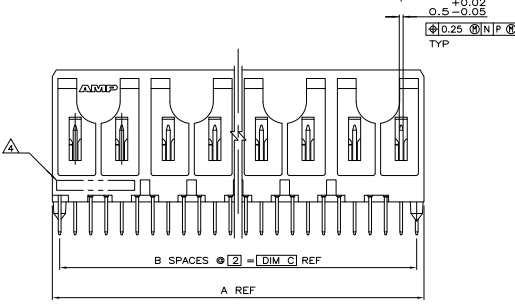
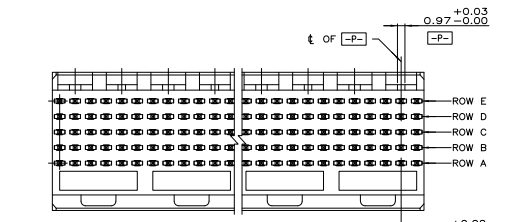


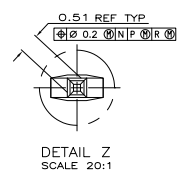
THIS DRAWING IS UNPUBLISHED
 UNLESS OTHERWISE NOTED
 © 2005 TELCORD ELECTRONICS CORPORATION. ALL RIGHTS RESERVED.

REV	DATE	DESCRIPTION	BY	CHK	APP
AD	47				
C		REVISED PER EC 0512-0278-05	21MAL05	JDF	RW
CT		REVISED PER EC0-10-000444	16AM10	KK	AEG



RECOMMENDED CIRCUIT PATTERN
 (COMPONENT SIDE)

- △ HOUSING MATERIAL: LIQUID CRYSTAL POLYMER
 COLOR: NATURAL.
- △ CONTACT MATERIAL: PHOSPHOR BRONZE
- △ CONTACT FINISH:(A)
 UNDERPLATE (ENTIRE CONTACT):
 0.00127 MIN NICKEL PER SAE-AMS-QQ-N-290
 ON MATING SURFACES;
 CONFORMS TO ALL TESTING SPECIFIED FOR TELCORDIA
 UNCONTROLLED ENVIRONMENT.
 ON LEADS:
 0.00381 MIN MATTE TIN PER ASTM B 545 OVER UNDERPLATE.
 LUBRICATION (MIN MATING SURFACES):
 SURFACE CONDITIONER AFTER PLATING.
- △ PART MARKING LOCATED APPROXIMATELY AS SHOWN.
- △ OBSOLETE PARTS: OBSOLETE CIS STREAMLINING PER D.RENAUD/D.SINISI



REV	DATE	DESCRIPTION	BY	CHK	APP
130	65	131.88			
118	59	119.88			
106	53	107.88			
94	47	95.88			
82	41	83.88			
70	35	71.88			
58	29	59.88			
46	23	47.88			
34	17	35.88			
22	11	23.88			
10	5	11.88			
330	4	5223000-1			
300	1	5223000-0			
270		5223000-9			
240		5223000-8			
210		5223000-7			
180		5223000-6			
150		5223000-5			
120		5223000-4			
90		5223000-3			
60		5223000-2			
30		5223000-1			

THIS DRAWING IS A CONTROLLED DOCUMENT.

REVISED LABEL	REVISED DATE	REVISED BY	REVISED CHECK	REVISED APP
REVISED DATE	REVISED BY	REVISED CHECK	REVISED APP	REVISED DATE

ASSEMBLY, PIN, SIGNAL, VERTICAL,
 Z-PACK 2mm FB, 5 ROW,
 SOLDER LEAD

DATE: 00779
 DRAWING NO: 5223000
 CUSTOMER DRAWING

THIS DRAWING IS A CONTROLLED DOCUMENT. TELCORD ELECTRONICS CORPORATION, HARRISBURG, PA 17105-3008