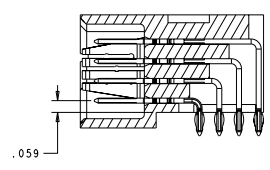
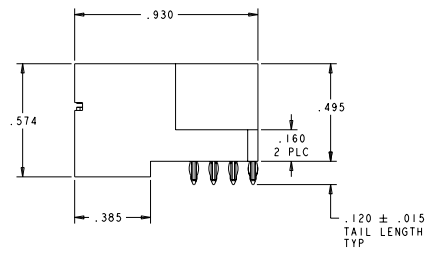
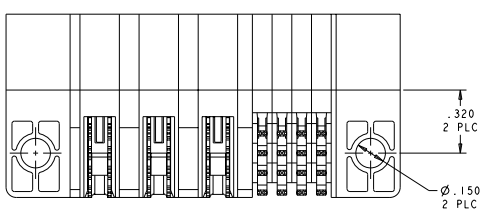
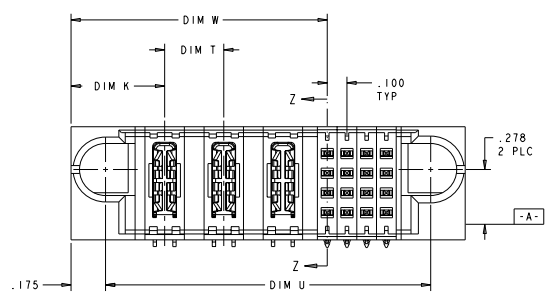
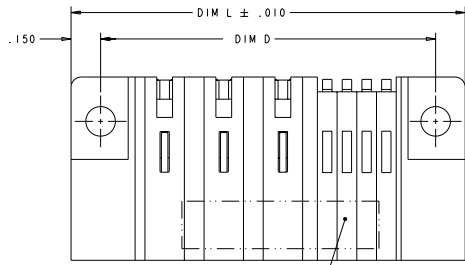


REV	DATE	DESCRIPTION	BY	CHK	APP
A	PER REV ECR-04-021202		SEP09	DZ	ST
A1	ADDED NEW DASH NUMBER		ZH0007	DZ	ST



- △ PART NUMBER, AND DATE CODE MARKED IN AREA SHOWN. MARKING ON BOTH SIDES PERMITTED FOR PARTS UNDER 2.00 LONG.
- △ MATERIAL:
 HOUSING - GLASS FILLED HIGH TEMP THERMO PLASTIC, UL94 V-0
 SIGNAL CONTACT - COPPER ALLOY
 POWER CONTACT - HIGH CONDUCTIVITY COPPER ALLOY
- △ CONTACT PLATING:
 SIGNAL CONTACTS - .000050 MIN Ni UNDER ALL, .000030 MIN Au ON CONTACT AREA, .000100 MIN Sn AT PCB INTERFACE.
 POWER CONTACTS - .000050 MIN Ni UNDER ALL, .000030 MIN Au ON CONTACT AREA, .000100 MIN Sn AT PCB INTERFACE.
- △ MECHANICAL CONNECTOR KEEP OUT ZONE.
- △ DATUM AND BASIC DIMENSIONS ESTABLISHED BY CUSTOMER.
- △ PCB - ALL HOLE DIAMETERS ARE FINISHED HOLE SIZES.
- △ PCB - .0453±.0010 DRILLED HOLES PLATED WITH .0003 MIN Sn OVER .001 TO .003 Cu PLATING TO ACHIEVE A .040 HOLE.

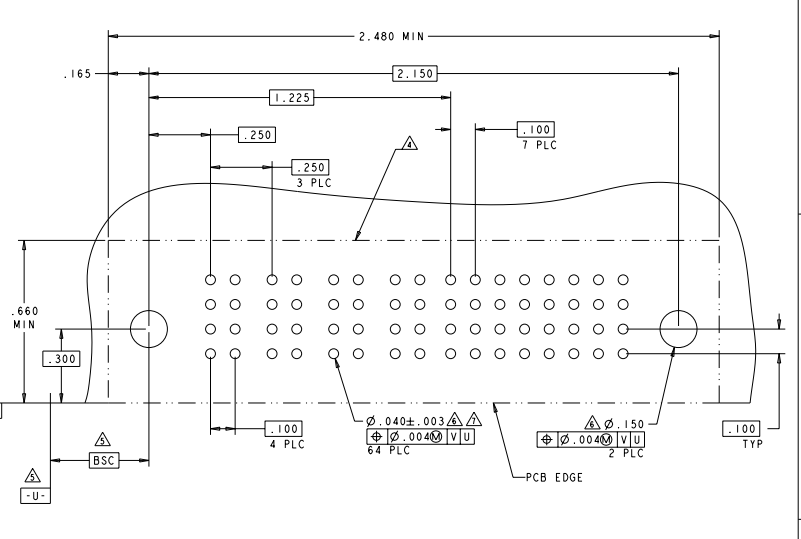
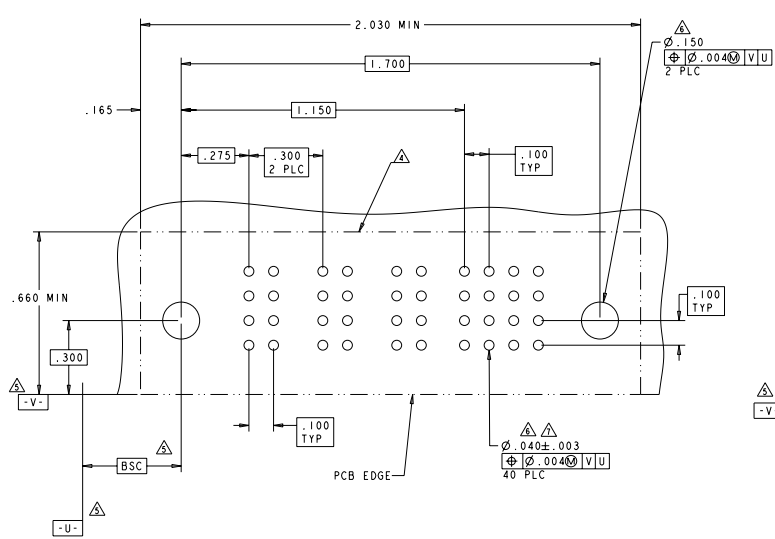
DIM T	DIM U	DIM D	DIM W	DIM L	DIM K	DESCRIPTION	PART NUMBER
.250	2.100	2.150	1.375	2.450	.450	4P + 32S	6450622-2
.300	1.650	1.700	1.300	2.000	.475	3ACP + 16S	6450622-1

DATE	04/23/2004	DESIGNER	SEP2004	TECH ELECTRONICS CORPORATION
DRAWN		CHECKED		
INCHES	0.0010/0.0025/0.0050	SCALE	AS SHOWN	
MATERIAL	UL94 V-0	FINISH		
DESCRIPTION	RIGHT ANGLE HEADER MULTI-BEAM NL - PWR-SIG W/GUIDES AND .150 HOLE, PRESS FIT			
DATE CODE	00778	DATE CODE	00778	6450622
CUSTOMER DRAWING	PAGE 1 OF 1			

REV	DATE	DESCRIPTION	BY	CHK	APP
ES	00	SEE SHEET 1			

PART NUMBER	ROWS	POWER			SIGNAL			
		P1	P2	P3	1	2	3	4
6450622-1	D	PT	PT	PT	Z5	Z5	Z5	Z5
	C				Y5	Y5	Y5	Y5
	B				R5	R5	R5	R5
A				O5	O5	O5	O5	
3ACP + 16S								

PART NUMBER	ROWS	POWER				SIGNAL							
		P1	P2	P3	P4	1	2	3	4	5	6	7	8
6450622-2	D	PT	PT	PT	PT	Z5	Z5	Z5	Z5	Z5	Z5	Z5	Z5
	C					Y5	Y5	Y5	Y5	Y5	Y5	Y5	Y5
	B					R5	R5	R5	R5	R5	R5	R5	R5
	A					O5	O5	O5	O5	O5	O5	O5	O5
4P + 32S													



CODE	MATING SEQUENCE	ROW
Z5	STD	D
Y5	STD	C
R5	STD	B
O5	STD	A

PT	STD	
CODE	MATING SEQUENCE	
POWER		
SIGNAL		

RIGHT ANGLE HEADER
 MULTI-BEAM ML - PWR-SIG W/GUIDES
 AND .150 HOLE, PRESS FIT
 STATE CASE CODE (SEE PAGE 40)
 A 00778 ©-6450622
 CUSTOMER DRAWING