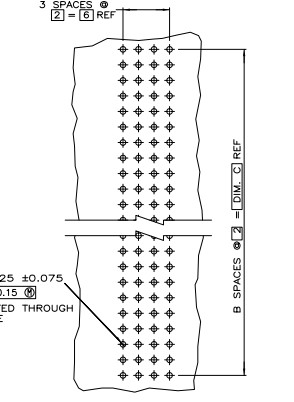
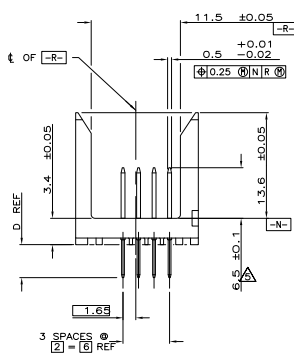
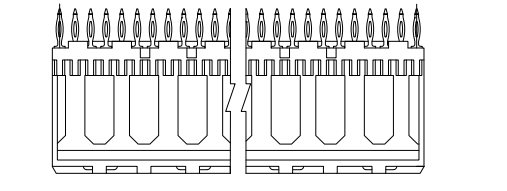
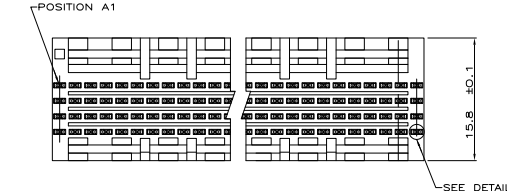
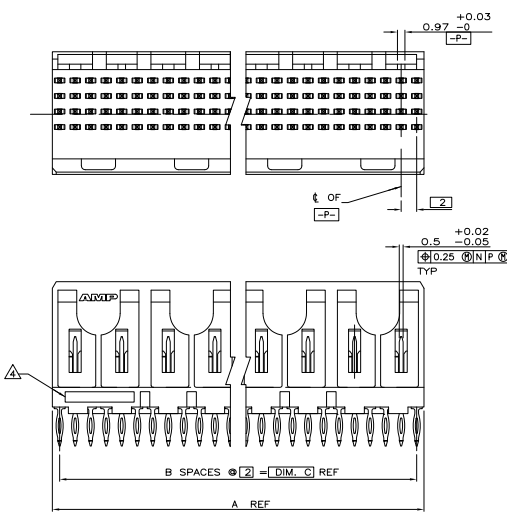
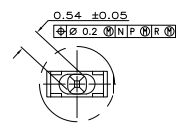


THIS DRAWING IS UNPUBLISHED  
 UNLESS SPECIFICALLY NOTED OTHERWISE  
 © 2005 TELCORDIA TECHNOLOGIES, INC. ALL RIGHTS RESERVED

REV	DATE	DESCRIPTION	BY	CHK
AD	47			
U		REVISED PER EC 0513-0563-04	11M0V5	BL DD
U1		REVISED PER EC0-10-000443	18M010	KK HMR



- △ HOUSING MATERIAL: LIQUID CRYSTAL POLYMER PER ASTM D5138 LCP000 G30A 32250. COLOR: NATURAL.
- △ CONTACT MATERIAL: PHOSPHOR BRONZE.
- △ CONTACT FINISH:  
 UNDERPLATE (ENTIRE CONTACT):  
 0.00127 MIN NICKEL.  
 ON MATING SURFACES:  
 CONFORMS TO ALL TESTING SPECIFIED FOR TELCORDIA  
 UNCONTROLLED ENVIRONMENT.  
 ON LEADS:  
 0.0006 MIN TIN-LEAD OVER UNDERPLATE.  
 LUBRICATION (ENTIRE CONTACT):  
 SURFACE CONDITIONER PER AMP SPEC 112-1002 AFTER PLATING.
- △ PART MARKING PER AMP INCORPORATED SPECIFICATION 115-9009, LOCATED APPROXIMATELY AS SHOWN.
- △ DIMENSION APPLIES WHEN SEATED ON PRINTED CIRCUIT BOARD.
- △ OBSOLETE PARTS: OBSOLETE CIS STREAMLINING PER D.RENAUD/D.SINISI



DETAIL Z  
 SCALE 20:1

RECOMMENDED CIRCUIT PATTERN  
 PER IPC-D-3300 TYPE II, CLASS C  
 (COMPONENT SIDE)

REV	DATE	DESCRIPTION	BY	CHK		
OB	4.25	34	17	35.88	72	1-536504-2
OB	4.25	130	65	131.88	264	1-536504-4
OB	4.25	106	53	107.88	216	1-536504-6
OB	4.25	118	59	119.88	240	536504-9
OB	4.25	70	35	71.88	144	536504-8
OB	4.25	66	33	67.88	136	536504-7
OB	4.25	58	29	59.88	120	536504-5
OB	4.25	82	41	83.88	168	536504-5
OB	4.25	94	47	95.88	192	536504-4
OB	4.25	46	23	47.88	96	536504-3
OB	4.25	22	11	23.88	48	536504-2
OB	4.25	10	5	11.88	24	536504-1

D	C	B	A	FINISH	NO OF POSN	PART NUMBER

THIS DRAWING IS A CONTROLLED DOCUMENT. IN CHARGE: 02/7/01  
 DATE: 02/7/01  
 PROJECT: PIN ASSEMBLY, SIGNAL MODULE, Z-PACK 2mm FB, 2mm  
 DRAWING NO: A1 00779 (G=536504)  
 CUSTOMER DRAWING