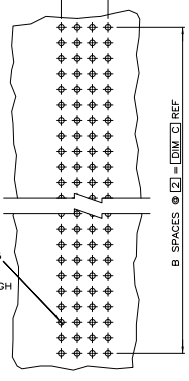
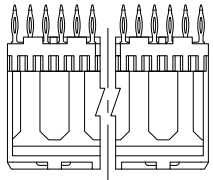
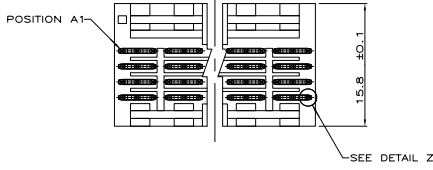
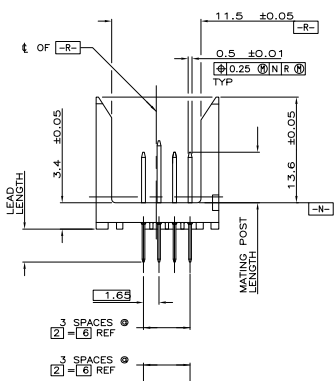
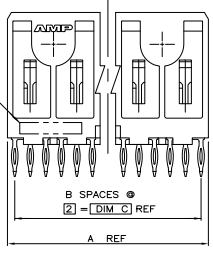
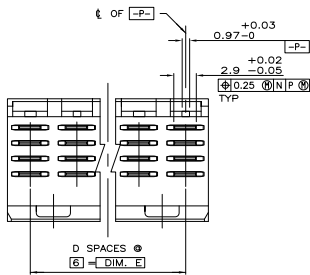


REV	DATE	DESCRIPTION	BY	CHK	APP
AD	47				
K		REVISED PER ECO-05-01006	210EC05	JDF	RW
K1		REVISED PER ECO-09-01008	09AN10	KK	AEG

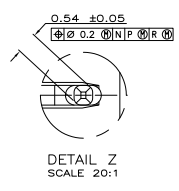


RECOMMENDED CIRCUIT PATTERN
 PER IPC-D300 TYPE II, CLASS C
 (COMPONENT SIDE)

- △ HOUSING MATERIAL: LIQUID CRYSTAL POLYMER PER ASTM D5138 LCP000 G30A 32250, COLOR: NATURAL.
- △ CONTACT MATERIAL: PHOSPHOR BRONZE PER UNS ALLOY NO. C51100, TEMPER: H04.
- △ CONTACT FINISH:
 UNDERPLATE (ENTIRE CONTACT):
 0.00127 MIN NICKEL PER SAE-AMS-QQ-N-290
 ON MATING SURFACES:
 FLASH GOLD PER ASTM B 488, OVER
 0.00076 MIN PALLADIUM-NICKEL OVER UNDERPLATE, OR
 0.00076 MIN GOLD PER ASTM B 488 OVER UNDERPLATE.
 ON LEADS:
 0.00127 MIN TIN-LEAD OVER UNDERPLATE.
 LUBRICATION (MIN MATING SURFACES):
 SURFACE CONDITIONER AFTER PLATING.
- △ PART MARKING PER AMP SPEC 115-9009.
 LOCATED APPROXIMATELY AS SHOWN.
- △ OBSOLETE PARTS: OBSOLETE CIS STREAMLINING PER D.RENAUD/D.SINISI

ROW	D	C	B	A	FINISH	NO OF POWER POSN	PART NUMBER
1	AA	AA	AA	AA		8	536606-2
2	AC	AC	AC	AC		8	536606-1
3	AA	AA	AA	AA		8	536606-1

CODE LETTER	MATING POST LENGTH ±0.1 (REF)	LEAD LENGTH (REF)
AA	6.5	4.25
AC	8	4.25



DETAIL Z
 SCALE 20:1

△ OBSOLETE

18	3	22	11	23.88	△	16	536606-2
6	1	10	5	11.88		8	536606-1

ROW	D	C	B	A	FINISH	NO OF POWER POSN	PART NUMBER
1	E	D	C	B	A		

THIS DRAWING IS A CONTROLLED DOCUMENT.

INCHES: 1/16, 1/8, 3/16, 1/4, 5/16, 3/8, 7/16, 1/2, 5/8, 3/4, 7/8, 1

MILLIMETERS: 1.5, 3, 4.5, 6, 7.5, 9, 10.5, 12, 13.5, 15, 16.5, 18, 19.5, 21, 22.5, 24, 25.5, 27, 28.5, 30, 31.5, 33, 34.5, 36, 37.5, 39, 40.5, 42, 43.5, 45, 46.5, 48, 49.5, 51, 52.5, 54, 55.5, 57, 58.5, 60, 61.5, 63, 64.5, 66, 67.5, 69, 70.5, 72, 73.5, 75, 76.5, 78, 79.5, 81, 82.5, 84, 85.5, 87, 88.5, 90, 91.5, 93, 94.5, 96, 97.5, 99, 100

DATE: 01/07/09
 DRAWN BY: A1
 CHECKED BY: 00779
 PART: 536606

THIS DRAWING IS A CONTROLLED DOCUMENT. CUSTOMER DRAWING

TTI Electronics Corporation
 Harrisburg, PA 17105-3608

ASSEMBLY, PIN, POWER, VERTICAL
 2-PACK 2mm PBL 4 ROW
 PRESS FIT LEADS, SEQUENCED BY ROW

REVISED TO: 1