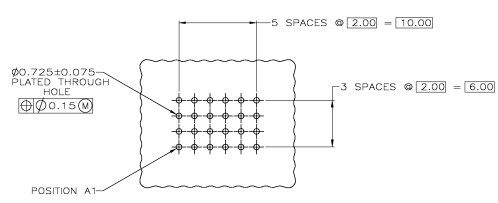
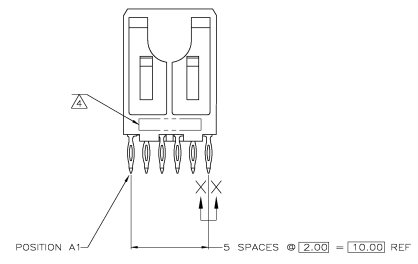
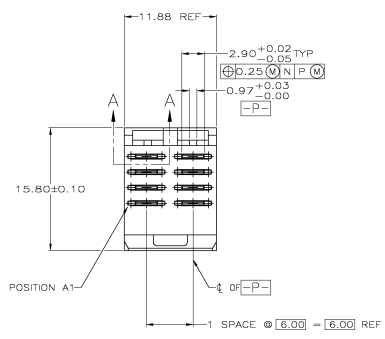


REV	DATE	DESCRIPTION	BY	CHK	APP
AD	00	RELEASED PER EC 0512-0235-04			



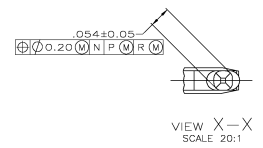
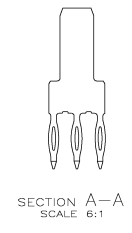
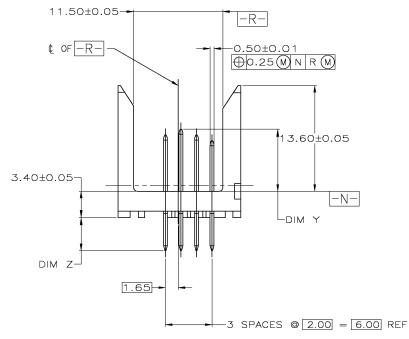
RECOMMENDED CIRCUIT PATTERN
 PER IPC-D300 TYPE II, CLASS C
 (COMPONENT SIDE)

LETTER CODE	DIM Y	DIM Z
AA	6.50	4.25
AC	8.00	4.25
AB	7.25	4.25

POSITION	1	2	3	4	5	6	ROW
D	AA		AA			D	
C	AB		AB			C	
B	AC		AC			B	
A	AB		AB			A	

POSITION
 CONTACT LOAD CHART

- △ HOUSING MATERIAL: LIQUID CRYSTAL POLYMER.
 COLOR: NATURAL.
- △ CONTACT MATERIAL: PHOSPHOR BRONZE.
- △ CONTACT FINISH: (D)
 UNDERPLATE (ENTIRE CONTACT):
 0.00127 MIN NICKEL PER SAE-AMS-QQ-N-290
 ON MATING SURFACES:
 FLASH GOLD PER ASTM B 488, OVER
 0.00078 MIN PALLADIUM-NICKEL OVER UNDERPLATE, OR
 0.00078 MIN GOLD PER ASTM B 488 OVER UNDERPLATE.
 ON LEADS:
 0.00127 MIN MATTE TIN PER ASTM B 545 OVER UNDERPLATE.
 LUBRICATION (MIN MATING SURFACES):
 SURFACE CONDITIONER AFTER PLATING.
- △ PART MARKING LOCATED APPROXIMATELY AS SHOWN.



THIS DRAWING IS A CONTROLLED DOCUMENT.

DESIGNED BY	SK	DATE	6-30-88
DRAWN BY	SK	DATE	6-30-88
CHECKED BY	AD	DATE	7-11-88
APPROVED BY	AD	DATE	7-11-88

TIPO Electronics Corporation
 Harrisburg, Pa 17105-3608

PIN ASSY, POWER, VERTICAL, Z-PACK 2mm FB,
 PRESS FIT LEADS, SEQUENCED BY ROW

SEE	DATE CODE	ISSUE NO	RESTRICTED TO
A1	00779	Q=55,36677	—

CUSTOMER DRAWING