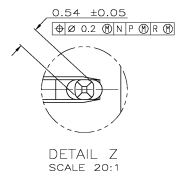


RECOMMENDED CIRCUIT PATTERN
 PER IPC-D300 TYPE II, CLASS C
 (COMPONENT SIDE)

- △ HOUSING MATERIAL: LIQUID CRYSTAL POLYMER PER ASTM D5138 LCP000 G30A 32250, COLOR: NATURAL.
- △ CONTACT MATERIAL: PHOSPHOR BRONZE PER UNS ALLOY NO. C51100, TEMPER: H04.
- △ CONTACT FINISH:(D)
 UNDERPLATE (ENTIRE CONTACT):
 0.00127 MIN NICKEL PER SAE-AMS-QQ-N-290
 ON MATING SURFACES:
 FLASH GOLD PER ASTM B 488, OVER
 0.00076 MIN PALLADIUM-NICKEL OVER UNDERPLATE, OR
 0.00076 MIN GOLD PER ASTM B 488 OVER UNDERPLATE.
 ON LEADS:
 0.00127 MIN MATTE TIN PER ASTM B 545 OVER UNDERPLATE.
 LUBRICATION (MIN MATING SURFACES):
 SURFACE CONDITIONER AFTER PLATING.
- △ PART MARKING LOCATED APPROXIMATELY AS SHOWN.

ROW	D	C	AA		AA
	B		AB		AB
			AC		AC
			AC		AC
	1	2	3	4	5
	POWER POSITION				

CODE LETTER	MATING POST LENGTH ±0.1 (REF)	LEAD LENGTH (REF)
AC	B	4.25
AB	7.25	4.25
AA	6.5	4.25



6	1	10	5	11.88	△	B	5536622-1
E	D	C	B	A	FINISH	NO OF POWER POSN	PART NUMBER
THIS DRAWING IS A CONTROLLED DOCUMENT.							
DIMENSIONS IN mm		TOLERANCE LEVELS		MATERIALS		ELECTRONIC CORPORATION	
D	F	F	F	PL	PL	York, Pa 17105-3608	
±0.15	±0.15	±0.15	±0.15	±0.15	±0.15	ASSEMBLY, PIN, POWER, VERTICAL	
±0.15	±0.15	±0.15	±0.15	±0.15	±0.15	Z-PACK 2mm FB, 4 ROW	
±0.15	±0.15	±0.15	±0.15	±0.15	±0.15	PRESS FIT LEADS, SQUARED BY ROW	
WEIGHT		SEE DATE CODE		PART NO		RESTRICTED TO	
—		A1		00778		5536622	
CUSTOMER DRAWING							