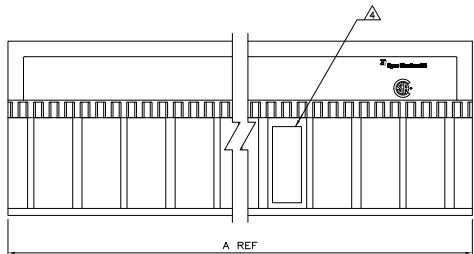
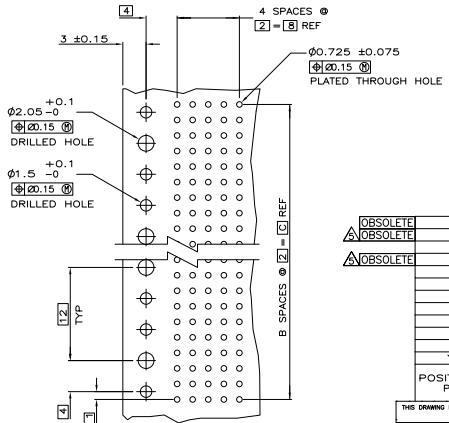
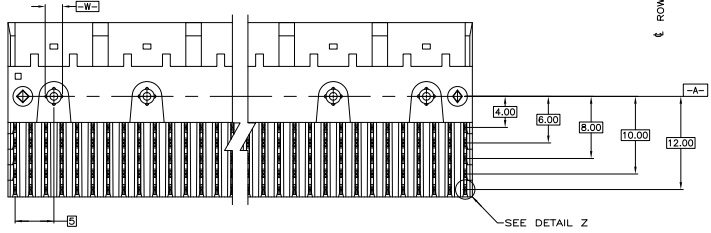
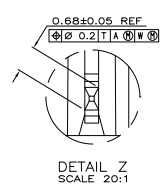
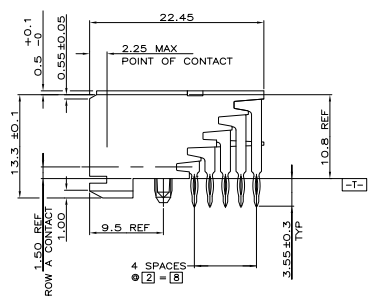
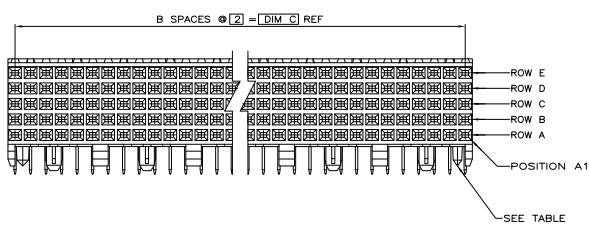


REV	DATE	DESCRIPTION	BY	CHK	APP
P1		REVISED PER ECO-08-009053	HAFFNER	DH	AS
P2		REVISED PER ECO-09-021826	STANHO	KK	AEG



- △ HOUSING MATERIAL: LIQUID CRYSTAL POLYMER
COLOR: NATURAL.
- △ CONTACT MATERIAL: PHOSPHOR-BRONZE.
- △ CONTACT FINISH:
UNDERPLATE (ENTIRE CONTACT):
0.00127 MIN NICKEL.
ON MATING SURFACES:
CONFORMS TO ALL TESTING SPECIFIED FOR TELCORDIA
UNCONTROLLED ENVIRONMENT.
ON LEADS
0.0006 MIN TIN-LEAD OVER UNDERPLATE.
LUBRICATION (ENTIRE CONTACT):
SURFACE CONDITIONER PER AMP SPEC 112-1002 AFTER PLATING.
- △ PART MARKING LOCATED APPROXIMATELY AS SHOWN.
- △ OBSOLETE PARTS: OBSOLETE CIS STREAMLINING PER D.RENAUD/D.SINISI



OBsolete	NO	214	107	215.88	540	1-223008-2
△	NO	130	65	131.88	330	1-223008-1
△	NO	118	59	119.88	300	1-223008-0
△	NO	106	53	107.88	270	223008-9
	NO	94	47	95.88	240	223008-8
	NO	82	41	83.88	210	223008-7
	NO	70	35	71.88	180	223008-6
	NO	58	29	59.88	150	223008-5
	NO	46	23	47.88	120	223008-4
	NO	34	17	35.88	90	223008-3
	NO	22	11	23.88	60	223008-2
	YES	10	5	11.88	30	223008-1

POSITIONING PEGS	C	B	A	FINISH	NO OF SIGNAL POSN	PART NUMBER

RECOMMENDED CIRCUIT PATTERN
PER IPC-D300 TYPE II, CLASS C
(COMPONENT SIDE)