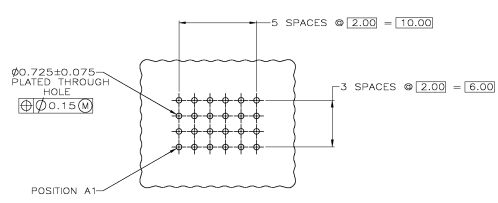
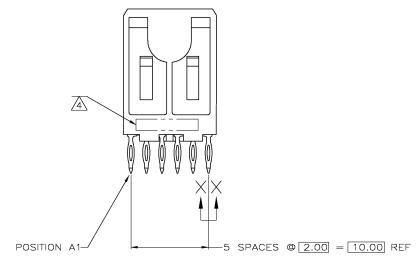
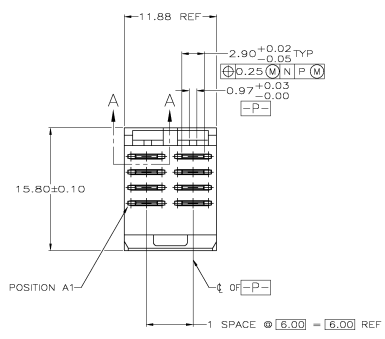


REV	DATE	DESCRIPTION	BY	CHK	APP
AD	00				
0		RELEASED PER EC 0512-0235-04			



RECOMMENDED CIRCUIT PATTERN
 PER IPC-0300 TYPE II, CLASS C
 (COMPONENT SIDE)

PART NUMBER 536699-1

D	AC	AC	D			
C	AC	AC	C			
B	AA	AA	B			
A	AA	AA	A			
ROW 1	2	3	4	5	6	ROW

POSITION
 CONTACT LOAD CHART

-	NO CONTACT	NO CONTACT
AC	8.00	4.25
AA	8.50	4.25
LETTER CODE	DIM Y	DIM Z

PART NUMBER 536699-2

D	AC	-	D			
C	AC	-	C			
B	AA	-	B			
A	AA	-	A			
ROW 1	2	3	4	5	6	ROW

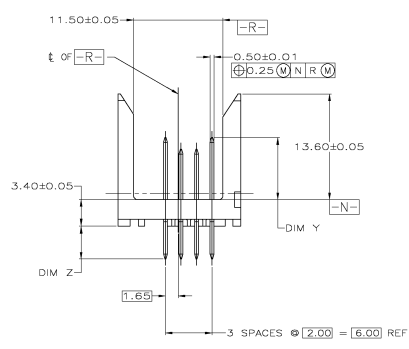
POSITION
 CONTACT LOAD CHART

PART NUMBER 536699-3

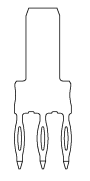
D	AC	AA	D			
C	AC	AA	C			
B	AC	AA	B			
A	AC	AA	A			
ROW 1	2	3	4	5	6	ROW

POSITION
 CONTACT LOAD CHART

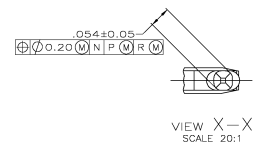
- △ HOUSING MATERIAL: LIQUID CRYSTAL POLYMER.
 COLOR: NATURAL.
- △ CONTACT MATERIAL: PHOSPHOR BRONZE.
- △ CONTACT FINISH: (D)
 UNDERPLATE (ENTIRE CONTACT):
 0.00127 MIN NICKEL PER SAE-AMS-QQ-N-290
 ON MATING SURFACES:
 FLASH GOLD PER ASTM B 488, OVER
 0.00076 MIN PALLADIUM-NICKEL OVER UNDERPLATE, OR
 0.00076 MIN GOLD PER ASTM B 488 OVER UNDERPLATE.
 ON LEADS:
 0.00127 MIN MATTE TIN PER ASTM B 545 OVER UNDERPLATE.
 LUBRICATION (MIN MATING SURFACES):
 SURFACE CONDITIONER AFTER PLATING.
- △ PART MARKING LOCATED APPROXIMATELY AS SHOWN.



536699-1 AS SHOWN



SECTION A-A
 SCALE: 6:1



VIEW X-X
 SCALE: 20:1

△	536699-3
△	536699-2
△	536699-1
△	FINISH
△	PART NUMBER

THIS DRAWING IS A CONTROLLED DOCUMENT.

DATE	10-07-88
BY	AD
CHKD	AD
APP'D	AD
REV	0
DATE	10-10-88
BY	AD
CHKD	AD
APP'D	AD
REV	0

Customer Drawing

536699-1

PN ASSY, POWER, VERTICAL, Z-PACK 2mm FB,
 PRESS FIT LEADS, SEQUENCED

SEE DATE CODE MARKING NO. A100778

RESTRICTED TO