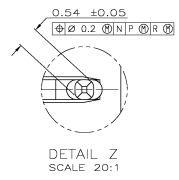


RECOMMENDED CIRCUIT PATTERN
 PER IPC-D300 TYPE II, CLASS C
 (COMPONENT SIDE)

- △ HOUSING MATERIAL: LIQUID CRYSTAL POLYMER, COLOR: NATURAL.
- △ CONTACT MATERIAL: PHOSPHOR BRONZE PER UNS ALLOY NO. C51100, TEMPER: H04.
- △ CONTACT FINISH:(D)
 UNDERPLATE (ENTIRE CONTACT):
 0.00127 MIN NICKEL PER SAE-AMS-QQ-N-290
 ON MATING SURFACES:
 FLASH GOLD PER ASTM B 488, OVER
 0.00076 MIN PALLADIUM-NICKEL OVER UNDERPLATE, OR
 0.00076 MIN GOLD PER ASTM B 488 OVER UNDERPLATE.
 ON LEADS:
 0.00127 MIN MATTE TIN PER ASTM B 545 OVER UNDERPLATE.
 LUBRICATION (MIN MATING SURFACES):
 SURFACE CONDITIONER AFTER PLATING.
- △ PART MARKING LOCATED APPROXIMATELY AS SHOWN.

ROW	D	AB	AC			
	C	AB	AC			
	B	AC	AC			
	A	AB	AB			
		1	2	3	4	5
		POWER POSITION				
		5536626-1				



ROW	D	AC	AC			
	C	AB	AB			
	B	AB	AB			
	A	AC	AC			
		1	2	3	4	5
		POWER POSITION				
		5536626-2				

CODE LETTER	MATING POST LENGTH ±0.1	LEAD LENGTH (REF)
AC	8	4.25
AB	7.25	4.25

6	1	10	5	11.88	△	B	5536626-2
6	1	10	5	11.88	△	B	5536626-1
E	D	C	B	A	FINISH	NO OF POWER POSN	PART NUMBER

THIS DRAWING IS A CONTROLLED DOCUMENT. **AVX** Type Electronic Corporation, Harrisburg, Pa 17105-3608

DATE: 01/11/00
 DRAWN BY: [unintelligible]
 CHECKED BY: [unintelligible]
 APPROVED BY: [unintelligible]

ASSEMBLY, PIN, POWER, VERTICAL
 Z-PACK 2mm FB, 4 ROW
 PRESS FIT LEADS, RANDOM SEQUENCED

SEE DATE CODE MARKING NO. A100778 Q=5536626

CUSTOMER DRAWING